

## VMP1 RABBIT PAB

**Cat.#:** S221033

**Product Name:** Anti-VMP1 Rabbit Polyclonal Antibody

**Synonyms:** EPG3; TANGO5; TMEM49

**UNIPROT ID:** Q96GC9 (Gene Accession - NP\_112200 )

**Background:** This gene encodes a transmembrane protein that plays a key regulatory role in the process of autophagy. The ectopic overexpression of the encoded protein in cultured cells triggers autophagy even under nutrient-rich conditions. This gene is overexpressed in pancreatitis affected acinar cells where the encoded protein mediates sequestration and degradation of potentially deleterious activated zymogen granules in a process termed, zymophagy.

**Immunogen:** Synthetic peptide of human VMP1

**Applications:** ELISA, WB, IHC

**Recommended Dilutions:** IHC: 50-200;WB: 500-2000;ELISA: 5000-10000

**Host Species:** Rabbit

**Clonality:** Rabbit Polyclonal

**Isotype:** Immunogen-specific rabbit IgG

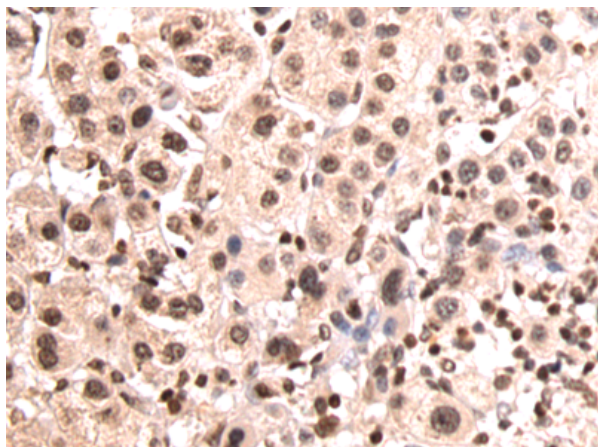
**Purification:** Antigen affinity purification

**Species Reactivity:** Human, Mouse, Rat

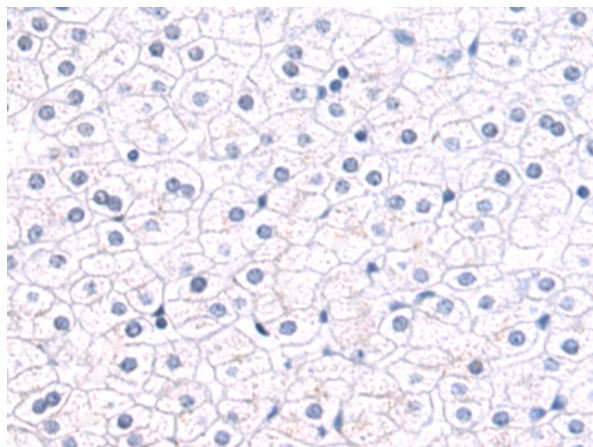
**Constituents:** PBS (without Mg<sup>2+</sup> and Ca<sup>2+</sup>), pH 7.4, 150 mM NaCl, 0.05% Sodium Azide and 40% glycerol

**Research Areas:** Cancer, Cardiovascular

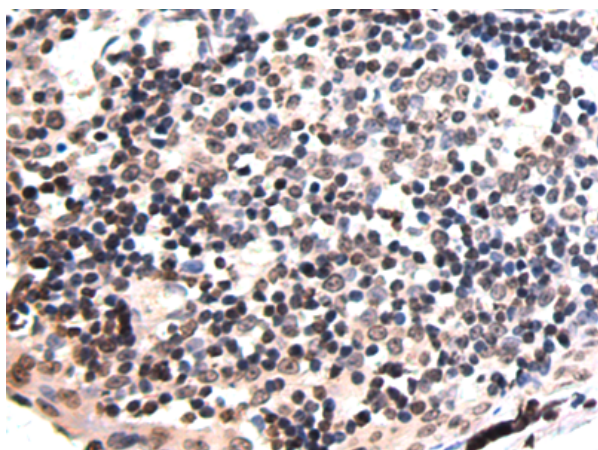
**Storage & Shipping:** Store at -20°C. Avoid repeated freezing and thawing



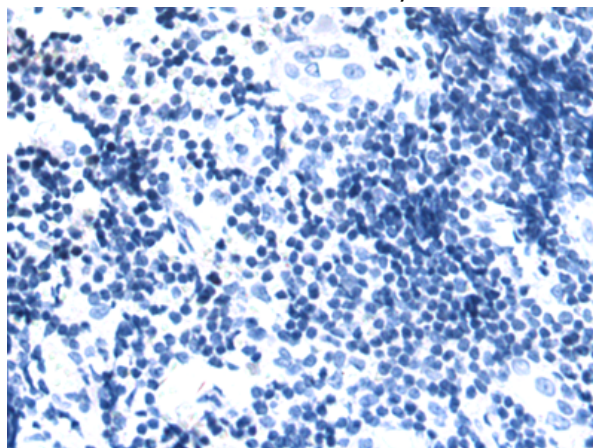
Immunohistochemistry analysis of paraffin embedded Human liver cancer tissue using 221033(VMPI Antibody) at a dilution of 1/50(Cytoplasm and Nucleus).



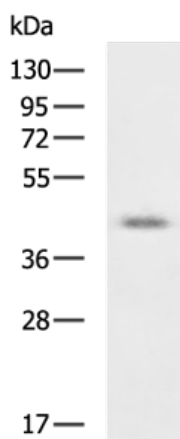
In comparison with the IHC on the left, the same paraffin-embedded Human liver cancer tissue is first treated with the synthetic peptide and then with 221033(Anti-VMPI Antibody) at dilution 1/50.



The image on the left is immunohistochemistry of paraffin-embedded Human tonsil tissue using 221033(Anti-VMPI Antibody) at a dilution of 1/50.



In comparison with the IHC on the left, the same paraffin-embedded Human tonsil tissue is first treated with synthetic peptide and then with D262380(Anti-VMPI Antibody) at dilution 1/50.



Gel: 8%SDS-PAGE, Lysate: 40 µg;  
Lane: MCF7 cell lysate;  
Primary antibody: 221033(VMPI Antibody) at dilution 1/800;  
Secondary antibody: HRP-conjugated Goat anti rabbit IgG at 1/5000 dilution;  
Exposure time: 30 seconds



# Product Description

Pioneering GTPase and Oncogene Product Development since 2010

---