

VMA21 RABBIT PAB

Cat.#: S213291

Product Name: Anti-VMA21 Rabbit Polyclonal Antibody

Synonyms: MEAX; XMEA

UNIPROT ID: Q3ZAQ7 (Gene Accession - NP_001017980)

Background: This gene encodes a chaperone for assembly of lysosomal vacuolar ATPase.

Immunogen: Synthetic peptide of human VMA21

Applications: ELISA, IHC, IF

Recommended Dilutions: IHC: 150-500; ELISA: 5000-240000

Host Species: Rabbit

Clonality: Rabbit Polyclonal

Isotype: Immunogen-specific rabbit IgG

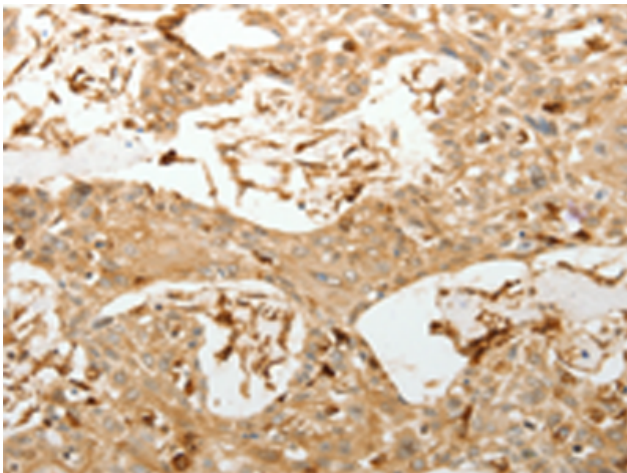
Purification: Antigen affinity purification

Species Reactivity: Human, Mouse

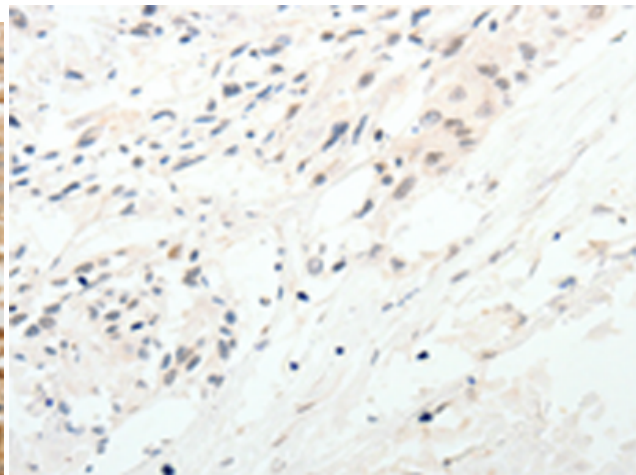
Constituents: PBS (without Mg²⁺ and Ca²⁺), pH 7.4, 150 mM NaCl, 0.05% Sodium Azide and 40% glycerol

Research Areas: Signal Transduction, Cell Biology

Storage & Shipping: Store at -20°C. Avoid repeated freezing and thawing



Immunohistochemistry analysis of paraffin embedded Human esophagus cancer tissue using 213291(VMA21 Antibody) at a dilution of 1/150(Cytoplasm).



In comparison with the IHC on the left, the same paraffin-embedded Human esophagus cancer tissue is first treated with the synthetic peptide and then with 213291(Anti-VMA21 Antibody) at dilution 1/150.