

VINCULIN RABBIT MAB

Cat.#: N263072

Product Name: Anti-Vinculin Rabbit Monoclonal Antibody

Synonyms: VCL; Vinculin; Metavinculin

UNIPROT ID: P18206

Background: Vinculin is a cytoskeletal protein that plays an important role in the regulation of focal adhesions and embryonic development. Three structural vinculin domains include an amino-terminal head, a short, flexible proline-rich region and a carboxy-terminal tail. In the inactive state, the head and tail domains of vinculin interact to form a closed conformation. The open and active form of vinculin translocates to focal adhesions where it is thought to be involved in anchoring F-actin to the membrane and regulation of cell migration.

Immunogen: A synthetic peptide of human Vinculin

Applications: WB, ICC/IF, IP

Recommended Dilutions: WB: 1/500-1/1000 IF: 1/50-1/200 IP: 1/20

Host Species: Rabbit

Clonality: Rabbit Monoclonal

Clone ID: R04-8F9

MW: Calculated MW: 124 kDa; Observed MW: 124 kDa

Isotype: IgG

Purification: Affinity Purified

Species Reactivity: Human, Mouse, Rat

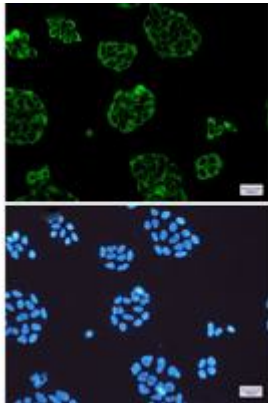
Conjugation: Unconjugated

Modification: Unmodified

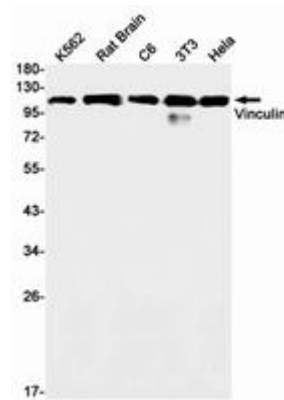
Constituents: PBS (without Mg²⁺ and Ca²⁺), pH 7.3 containing 50% glycerol, 0.5% BSA and 0.02% sodium azide

Research Areas: Signal Transduction

Storage & Shipping: Store at -20°C. Avoid repeated freezing and thawing



Immunocytochemistry analysis of Vinculin (green) in HeLa using Vinculin antibody, and DAPI (blue)



Western blot analysis of Vinculin in K562, rat Brain, C6, 3T3, HeLa lysates using Vinculin antibody.