

## VGLL3 RABBIT PAB

**Cat.#:** S221529

**Product Name:** Anti-VGLL3 Rabbit Polyclonal Antibody

**Synonyms:** VGL3; VGL-3

**UNIPROT ID:** A8MV65 (Gene Accession - NP\_057290 )

**Background:** May act as a specific coactivator for the mammalian TEFs.

**Immunogen:** Synthetic peptide of human VGLL3

**Applications:** ELISA, IHC

**Recommended Dilutions:** IHC: 25-50; ELISA: 5000-10000

**Host Species:** Rabbit

**Clonality:** Rabbit Polyclonal

**Isotype:** Immunogen-specific rabbit IgG

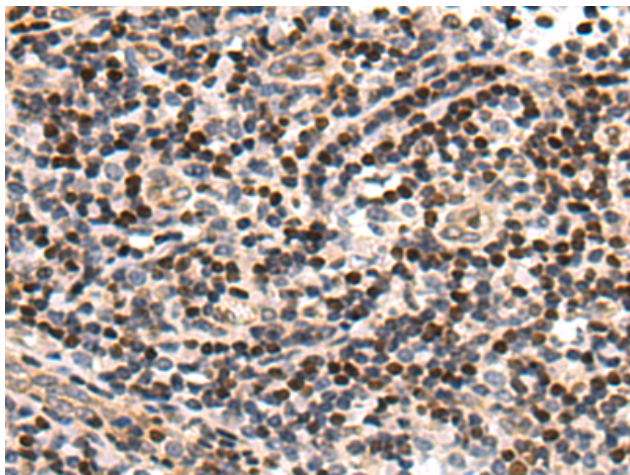
**Purification:** Antigen affinity purification

**Species Reactivity:** Human, Mouse

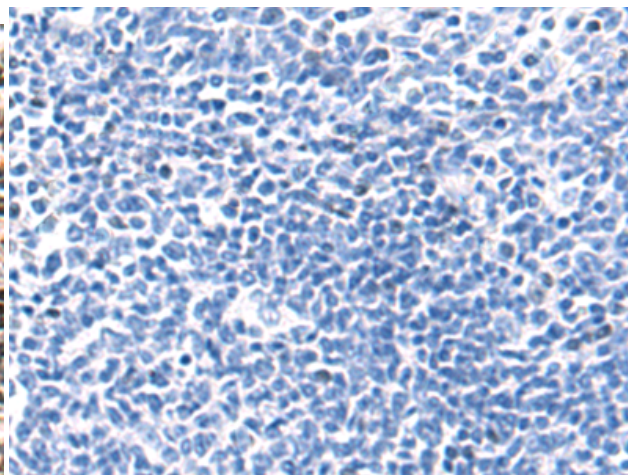
**Constituents:** PBS (without Mg<sup>2+</sup> and Ca<sup>2+</sup>), pH 7.4, 150 mM NaCl, 0.05% Sodium Azide and 40% glycerol

**Research Areas:** Epigenetics and Nuclear Signaling

**Storage & Shipping:** Store at -20°C. Avoid repeated freezing and thawing



Immunohistochemistry analysis of paraffin embedded Human tonsil tissue using 221529(VGLL3 Antibody) at a dilution of 1/25(Nucleus).



In comparison with the IHC on the left, the same paraffin-embedded Human tonsil tissue is first treated with the synthetic peptide and then with 221529(Anti-VGLL3 Antibody) at dilution 1/25.