

VEGFD RABBIT MAB

Cat.#: N263067

Product Name: Anti-VEGFD Rabbit Monoclonal Antibody

Synonyms: FIGF; VEGFD

UNIPROT ID: O43915

Background: Growth factor active in angiogenesis, lymphangiogenesis and endothelial cell growth, stimulating their proliferation and migration and also has effects on the permeability of blood vessels.

Immunogen: A synthetic peptide of human VEGFD

Applications: WB,IHC-F,IHC-P,ICC/IF

Recommended Dilutions: WB: 1/500-1/1000 IHC: 1/50-1/100 IF: 1/50-1/200

Host Species: Rabbit

Clonality: Rabbit Monoclonal

Clone ID: R03-8H6

MW: Calculated MW: 40 kDa; Observed MW: 40 kDa

Isotype: IgG

Purification: Affinity Purified

Species Reactivity: Human,Mouse,Rat

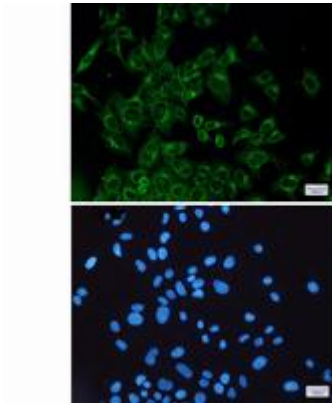
Conjugation: Unconjugated

Modification: Unmodified

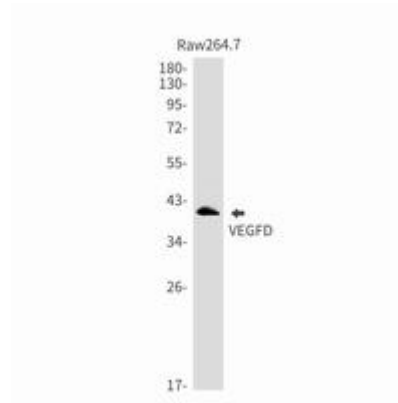
Constituents: PBS (without Mg²⁺ and Ca²⁺), pH 7.3 containing 50% glycerol, 0.5% BSA and 0.02% sodium azide

Research Areas: Cardiovascular

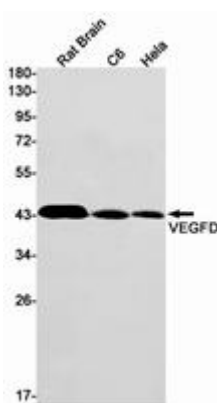
Storage & Shipping: Store at -20°C. Avoid repeated freezing and thawing



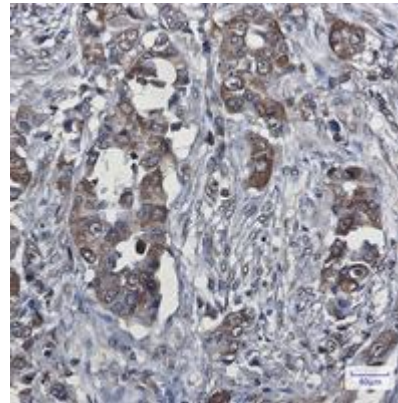
Immunocytochemistry analysis of VEGFD (green) in Hela using VEGFD antibody, and DAPI (blue)



Western blot analysis of VEGFD in Raw264.7 lysates using VEGFD antibody.



Western blot analysis of VEGFD in rat Brain, C6, Hela lysates using VEGFD antibody.



Immunohistochemistry analysis of paraffin-embedded Human lung cancer using VEGFD antibody. High-pressure and temperature Sodium Citrate pH 6.0 was used for antigen retrieval.