

VCAM1 RABBIT MAB

Cat.#: N261752

Product Name: Anti-VCAM1 Rabbit Monoclonal Antibody

Synonyms: VCAM1; LICAM; Vascular cell adhesion protein 1; V-CAM 1; VCAM-1; INCAM-100; CD antigen CD106

UNIPROT ID: P19320

Background: This gene is a member of the Ig superfamily and encodes a cell surface sialoglycoprotein expressed by cytokine-activated endothelium. This type I membrane protein mediates leukocyte-endothelial cell adhesion and signal transduction, and may play a role in the development of atherosclerosis and rheumatoid arthritis. Two alternatively spliced transcripts encoding different isoforms have been described for this gene. Tissue specificity:

Immunogen: A synthetic peptide of VCAM1

Applications: WB, IHC-P, IP

Recommended Dilutions: WB: 1/500-1/1000 IHC: 1/50-1/100 IP: 1/20

Host Species: Rabbit

Clonality: Rabbit Monoclonal

Clone ID: R02-7H1

MW: Calculated MW: 81 kDa; Observed MW: 110 kDa

Isotype: IgG

Purification: Affinity Purified

Species Reactivity: Human, Mouse, Rat

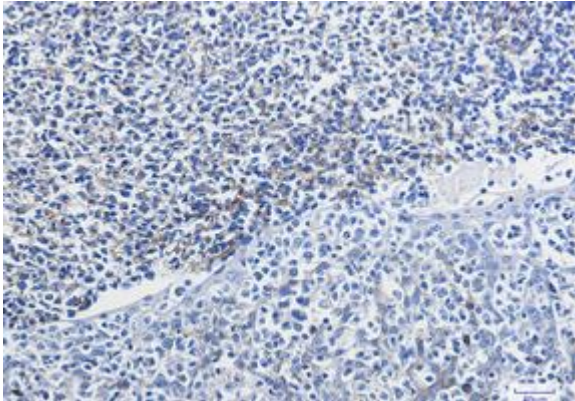
Conjugation: Unconjugated

Modification: Unmodified

Constituents: PBS (without Mg²⁺ and Ca²⁺), pH 7.3 containing 50% glycerol, 0.5% BSA and 0.02% sodium azide

Research Areas: Signal Transduction

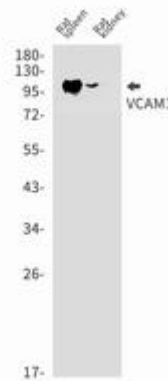
Storage & Shipping: Store at -20°C. Avoid repeated freezing and thawing



Immunohistochemistry analysis of paraffin-embedded Human tonsil using VCAM1 antibody. High-pressure and temperature Sodium Citrate pH 6.0 was used for antigen retrieval.



Western blot analysis of VCAM1 in 3T3 lysates using VCAM1 antibody.



Western blot analysis of VCAM1 in rat spleen, rat kidney lysates using VCAM1 antibody.