

VAMP4 RABBIT PAB

Cat.#: S221560

Product Name: Anti-VAMP4 Rabbit Polyclonal Antibody

Synonyms: VAMP-4; VAMP24

UNIPROT ID: O75379 (Gene Accession - NP_003753)

Background: Synaptobrevins/VAMPs, syntaxins, and the 25-kD synaptosomal-associated protein SNAP25 are the main components of a protein complex involved in the docking and/or fusion of synaptic vesicles with the presynaptic membrane. The protein encoded by this gene is a member of the vesicle-associated membrane protein (VAMP)/synaptobrevin family. This protein may play a role in trans-Golgi network-to-endosome transport.

Immunogen: Synthetic peptide of human VAMP4

Applications: ELISA, WB, IHC

Recommended Dilutions: IHC: 40-200;WB: 500-2000;ELISA: 5000-10000

Host Species: Rabbit

Clonality: Rabbit Polyclonal

Isotype: Immunogen-specific rabbit IgG

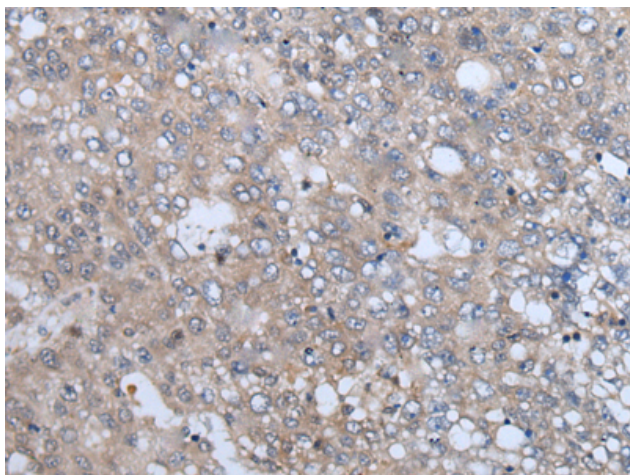
Purification: Antigen affinity purification

Species Reactivity: Human, Mouse

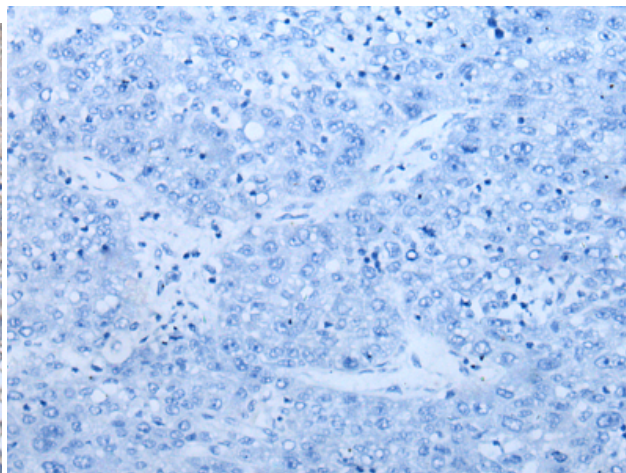
Constituents: PBS (without Mg²⁺ and Ca²⁺), pH 7.4, 150 mM NaCl, 0.05% Sodium Azide and 40% glycerol

Research Areas: Signal Transduction

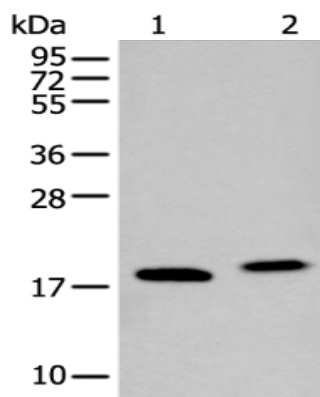
Storage & Shipping: Store at -20°C. Avoid repeated freezing and thawing



Immunohistochemistry analysis of paraffin embedded Human liver cancer tissue using 221560(VAMP4 Antibody) at a dilution of 1/50(Cytoplasm and Cell membrane).



In comparison with the IHC on the left, the same paraffin-embedded Human liver cancer tissue is first treated with the synthetic peptide and then with 221560(Anti-VAMP4 Antibody) at dilution 1/50.



Gel: 12%SDS-PAGE, Lysate: 40 μ g;
 Lane 1-2: K562 cell and Mouse brain tissue lysates;
 Primary antibody: 221560(VAMP4 Antibody) at dilution 1/400;
 Secondary antibody: Goat anti rabbit IgG at 1/8000 dilution;
 Exposure time: 30 seconds