

VAMP2 RABBIT MAB

Cat.#: N263060

Product Name: Anti-VAMP2 Rabbit Monoclonal Antibody

Synonyms: vesicle-associated membrane protein 2 (synaptobrevin 2); SYB2; VAMP-2

UNIPROT ID: P63027

Background: The SNARE complex is involved in vesicular transport and membrane fusion, a process regulated by calcium. In neurons, VAMP2 is predominantly inserted in presynaptic vesicle membranes. Assembly of VAMP2 with the plasma membrane SNAREs syntaxin 1 and SNAP25 is a key event necessary for membrane fusion and neurotransmitter release.

Immunogen: A synthetic peptide of human VAMP2

Applications: WB, ICC/IF, IP

Recommended Dilutions: WB: 1/500-1/1000 IF: 1/50-1/200 IP: 1/20

Host Species: Rabbit

Clonality: Rabbit Monoclonal

Clone ID: R04-7A5

MW: Calculated MW: 13 kDa; Observed MW: 13 kDa

Isotype: IgG

Purification: Affinity Purified

Species Reactivity: Human, Mouse, Rat

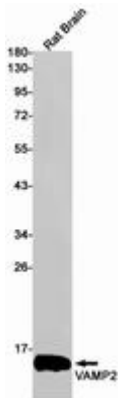
Conjugation: Unconjugated

Modification: Unmodified

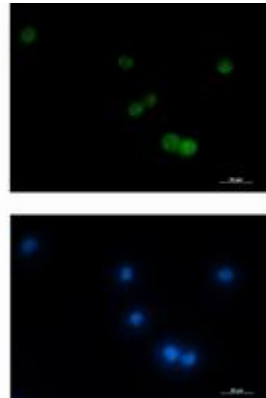
Constituents: PBS (without Mg²⁺ and Ca²⁺), pH 7.3 containing 50% glycerol, 0.5% BSA and 0.02% sodium azide

Research Areas: Signal Transduction

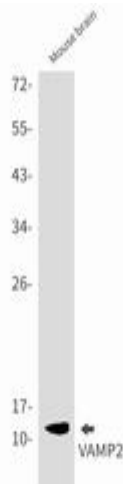
Storage & Shipping: Store at -20°C. Avoid repeated freezing and thawing



Western blot analysis of VAMP2 in rat Brain lysates using VAMP2 antibody



Immunocytochemistry analysis of VAMP2 (green) in Jurkat using VAMP2 antibody, and DAPI (blue).



Western blot analysis of VAMP2 in mouse brain lysates using VAMP2 antibody.