

UTS2B RABBIT PAB

Cat.#: S221097

Product Name: Anti-UTS2B Rabbit Polyclonal Antibody

Synonyms: U2B; URP; UTS2D

UNIPROT ID: Q765I0 (Gene Accession - NP_937795)

Background: Potent vasoconstrictor. Human Urotensin II is composed of only 11 amino acid residues, while fish and frog Urotensin II possess 12 and 13 amino acid residues, respectively (2). Human Urotensin II is found within both vascular and cardiac tissue, including coronary atheroma, and effectively constricts isolated arteries from nonhuman primates (3). Urotensin II may act as an autocrine and/or paracrine hormone rather than as a circulating hormone, by playing an important role in the development of ventricular hypertrophy induced by chronic hypoxia (4).

Immunogen: Synthetic peptide of human UTS2B

Applications: ELISA, WB, IHC

Recommended Dilutions: IHC: 25-100;WB: 500-2000;ELISA: 2000-5000

Host Species: Rabbit

Clonality: Rabbit Polyclonal

Isotype: Immunogen-specific rabbit IgG

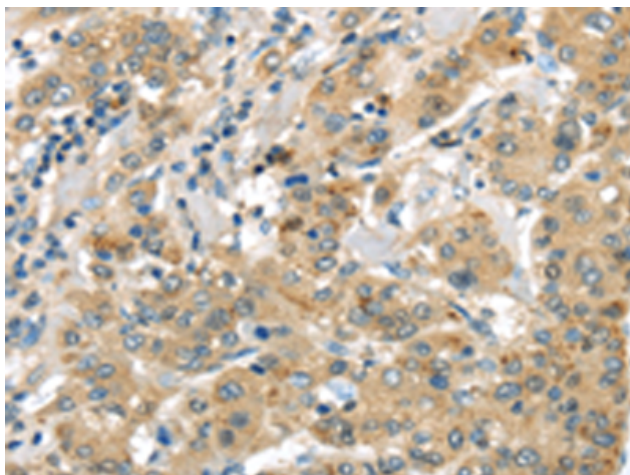
Purification: Antigen affinity purification

Species Reactivity: Human

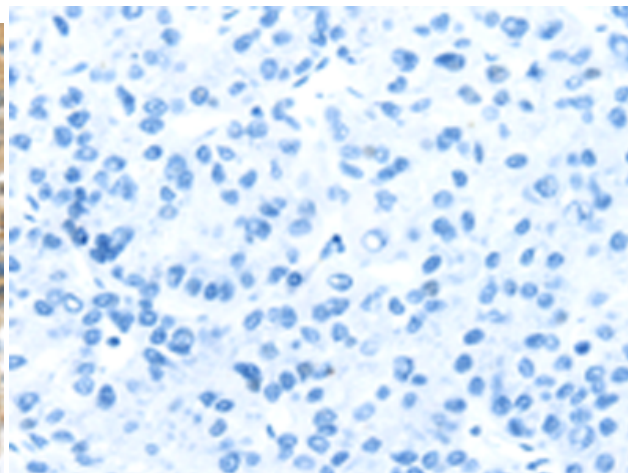
Constituents: PBS (without Mg²⁺ and Ca²⁺), pH 7.4, 150 mM NaCl, 0.05% Sodium Azide and 40% glycerol

Research Areas: Signal Transduction, Cardiovascular

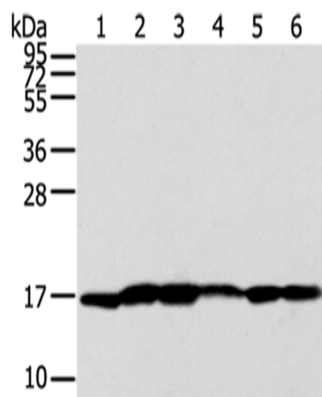
Storage & Shipping: Store at -20°C. Avoid repeated freezing and thawing



Immunohistochemistry analysis of paraffin embedded Human liver cancer tissue using 221097(UTS2B Antibody) at a dilution of 1/35(Cytoplasm).



In comparison with the IHC on the left, the same paraffin-embedded Human liver cancer tissue is first treated with the synthetic peptide and then with 221097(Anti-UTS2B Antibody) at dilution 1/35.



Gel: 12%SDS-PAGE, Lysate: 40 µg;
Lane 1-6: A431 cells, Human liver cancer tissue,
Lovo cells, PC3 cells, Human placenta tissue,
293T cells;
Primary antibody: 221097(UTS2B Antibody) at
dilution 1/200;
Secondary antibody: Goat anti rabbit IgG at
1/8000 dilution;
Exposure time: 30 seconds