

## USP35 RABBIT PAB

**Cat.#:** S218332

**Product Name:** Anti-USP35 Rabbit Polyclonal Antibody

**Synonyms:**

**UNIPROT ID:** Q9P2H5 (Gene Accession - BC131489 )

**Background:** USP35 (ubiquitin specific peptidase 35) is a 1,017 amino acid protein that belongs to the peptidase C19 family. Expressed in pancreas, testis and skeletal muscle, USP35 functions to catalyze the conversion of a ubiquitin C-terminal thioester and water to free ubiquitin and a thiol, a reaction that may play a role in signaling events throughout the cell.

**Immunogen:** Fusion protein of human USP35

**Applications:** ELISA, IHC

**Recommended Dilutions:** IHC: 20-100; ELISA: 5000-10000

**Host Species:** Rabbit

**Clonality:** Rabbit Polyclonal

**Isotype:** Immunogen-specific rabbit IgG

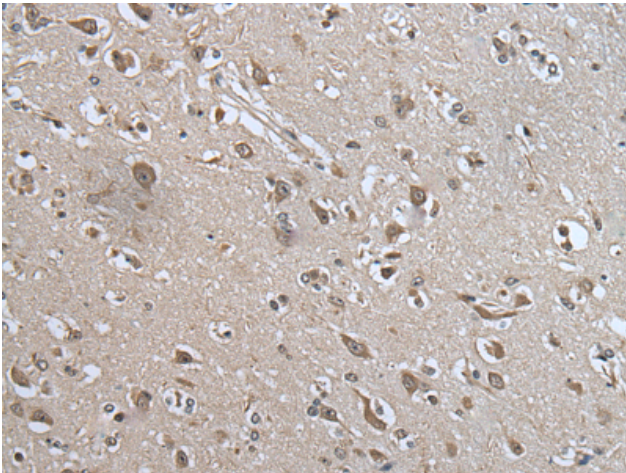
**Purification:** Antigen affinity purification

**Species Reactivity:** Human

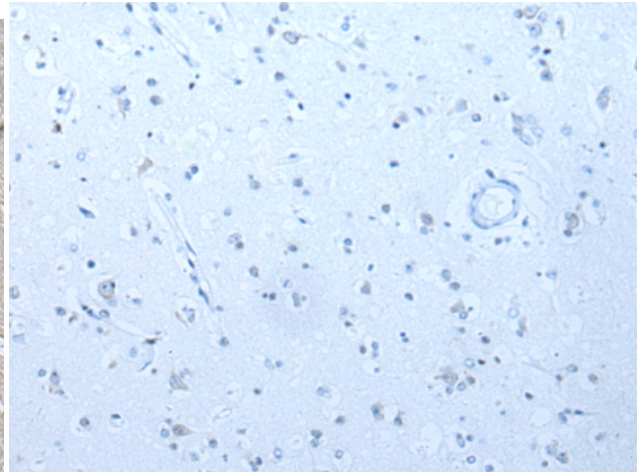
**Constituents:** PBS (without Mg<sup>2+</sup> and Ca<sup>2+</sup>), pH 7.4, 150 mM NaCl, 0.05% Sodium Azide and 40% glycerol

**Research Areas:** Epigenetics and Nuclear Signaling, Cell Biology

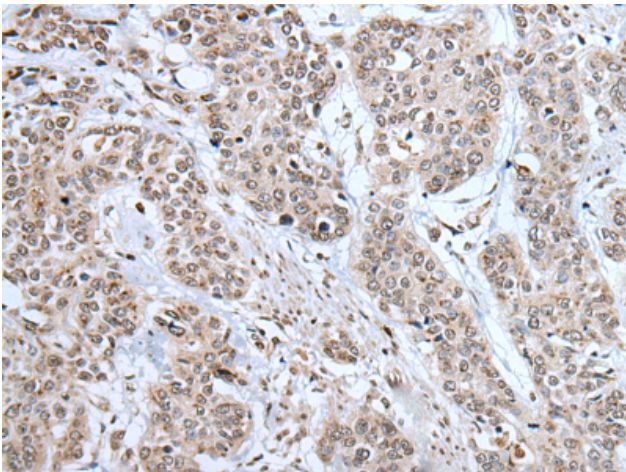
**Storage & Shipping:** Store at -20°C. Avoid repeated freezing and thawing



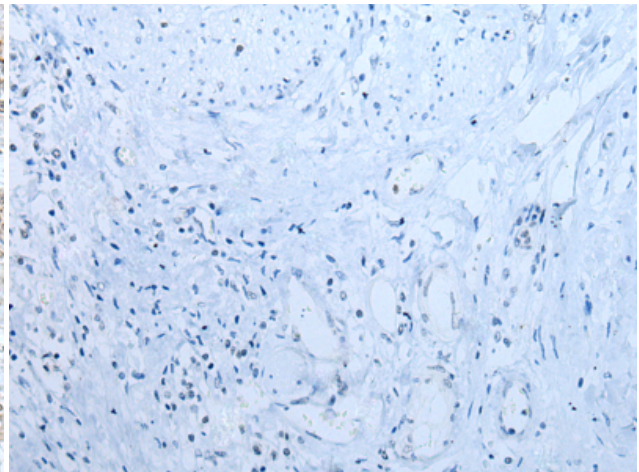
Immunohistochemistry analysis of paraffin embedded Human brain tissue using 218332(USP35 Antibody) at a dilution of 1/30(Nucleus and Cytoplasm).



In comparison with the IHC on the left, the same paraffin-embedded Human brain tissue is first treated with the fusion protein and then with 218332(Anti-USP35 Antibody) at dilution 1/30.



The image on the left is immunohistochemistry of paraffin-embedded Human prostate cancer tissue using 218332(Anti-USP35 Antibody) at a dilution of 1/30.



In comparison with the IHC on the left, the same paraffin-embedded Human prostate cancer tissue is first treated with fusion protein and then with D224192(Anti-USP35 Antibody) at dilution 1/30.