

USE1 RABBIT PAB

Cat.#: S218152

Product Name: Anti-USE1 Rabbit Polyclonal Antibody

Synonyms: D12; P31; SLT1; MDS032

UNIPROT ID: Q9NZ43 (Gene Accession - BC006005)

Background: SNARE that may be involved in targeting and fusion of Golgi-derived retrograde transport vesicles with the ER.

Immunogen: Full length fusion protein

Applications: ELISA, WB, IHC

Recommended Dilutions: IHC: 25-100;WB: 200-1000;ELISA: 5000-10000

Host Species: Rabbit

Clonality: Rabbit Polyclonal

Isotype: Immunogen-specific rabbit IgG

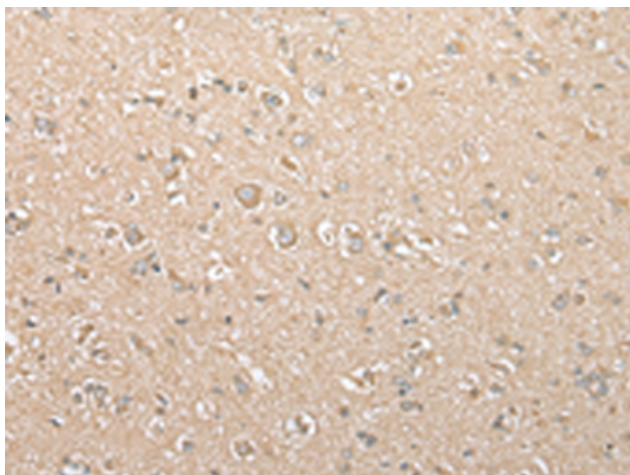
Purification: Antigen affinity purification

Species Reactivity: Human, Mouse

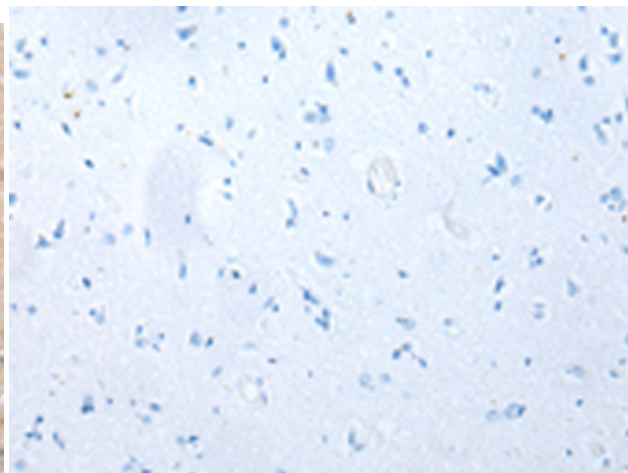
Constituents: PBS (without Mg²⁺ and Ca²⁺), pH 7.4, 150 mM NaCl, 0.05% Sodium Azide and 40% glycerol

Research Areas: Signal Transduction

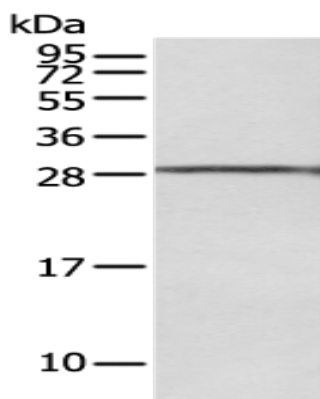
Storage & Shipping: Store at -20°C. Avoid repeated freezing and thawing



Immunohistochemistry analysis of paraffin embedded Human brain tissue using 218152(USE1 Antibody) at a dilution of 1/25(Cytoplasm).



In comparison with the IHC on the left, the same paraffin-embedded Human brain tissue is first treated with the fusion protein and then with 218152(Anti-USE1 Antibody) at dilution 1/25.



Gel: 12%SDS-PAGE, Lysate: 40 μ g;
Lane: 293T cell;
Primary antibody: 218152(USE1 Antibody) at dilution 1/250;
Secondary antibody: Goat anti rabbit IgG at 1/8000 dilution;
Exposure time: 10 seconds