

UGGT1 RABBIT PAB

Cat.#: S221582

Product Name: Anti-UGGT1 Rabbit Polyclonal Antibody

Synonyms: UGT1; HUGT1; UGCGL1

UNIPROT ID: Q9NYU2 (Gene Accession - NP_064505)

Background: UDP-glucose:glycoprotein glucosyltransferase (UGT) is a soluble protein of the endoplasmic reticulum (ER) that selectively reglucosylates unfolded glycoproteins, thus providing quality control for protein transport out of the ER.

Immunogen: Synthetic peptide of human UGGT1

Applications: ELISA, WB, IHC

Recommended Dilutions: IHC: 20-100;WB: 200-1000;ELISA: 5000-10000

Host Species: Rabbit

Clonality: Rabbit Polyclonal

Isotype: Immunogen-specific rabbit IgG

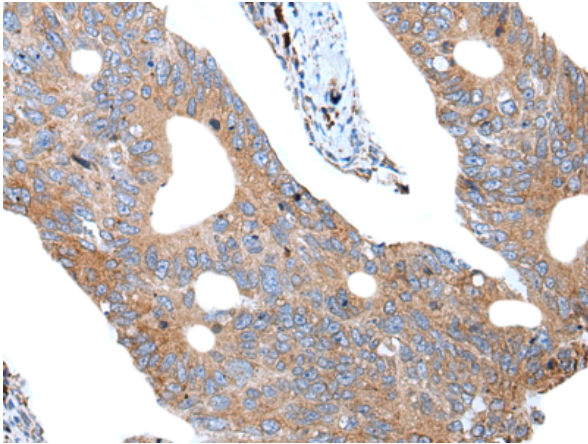
Purification: Antigen affinity purification

Species Reactivity: Human

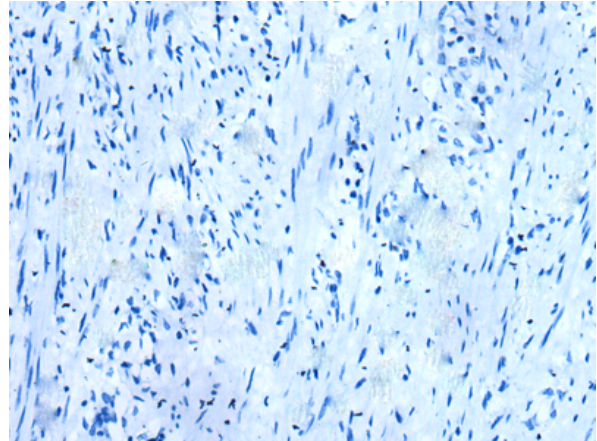
Constituents: PBS (without Mg²⁺ and Ca²⁺), pH 7.4, 150 mM NaCl, 0.05% Sodium Azide and 40% glycerol

Research Areas: Signal Transduction

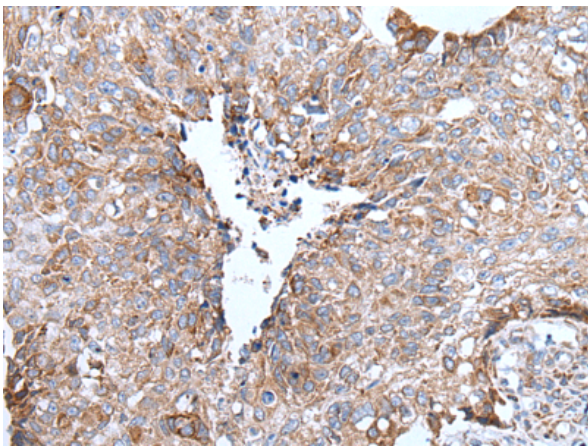
Storage & Shipping: Store at -20°C. Avoid repeated freezing and thawing



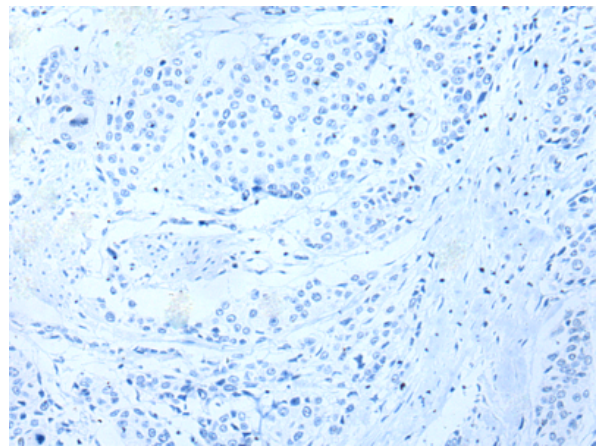
Immunohistochemistry analysis of paraffin embedded Human colorectal cancer tissue using 221582(UGGT1 Antibody) at a dilution of 1/20(Cytoplasm).



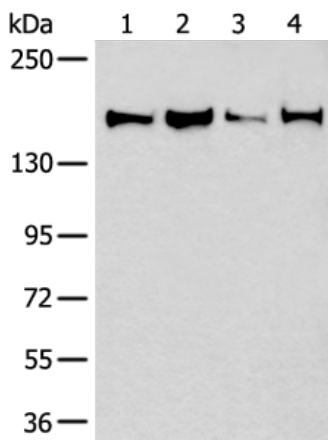
In comparison with the IHC on the left, the same paraffin-embedded Human colorectal cancer tissue is first treated with the synthetic peptide and then with 221582(Anti-UGGT1 Antibody) at dilution 1/20.



The image on the left is immunohistochemistry of paraffin-embedded Human lung cancer tissue using 221582(Anti-UGGT1 Antibody) at a dilution of 1/20.



In comparison with the IHC on the left, the same paraffin-embedded Human lung cancer tissue is first treated with synthetic peptide and then with D263230(Anti-UGGT1 Antibody) at dilution 1/20.



Gel: 6%SDS-PAGE, Lysate: 40 µg;
Lane 1-4: 231, A172, Jurkat and HEPG2 cell lysates;
Primary antibody: 221582(UGGT1 Antibody) at dilution 1/200;
Secondary antibody: Goat anti rabbit IgG at 1/8000 dilution;
Exposure time: 1 minute



Product Description

Pioneering GTPase and Oncogene Product Development since 2010
