

UFM1 RABBIT MAB

Cat.#: N261554

Product Name: Anti-UFM1 Rabbit Monoclonal Antibody

Synonyms: Ubiquitin-fold modifier 1; C13orf20

UNIPROT ID: P61960

Background: Ubiquitin-like modifier which can be covalently attached via an isopeptide bond to lysine residues of substrate proteins as a monomer or a lysine-linked polymer.

Immunogen: A synthetic peptide of human UFM1

Applications: WB,IHC-P,IP

Recommended Dilutions: WB: 1/500-1/1000 IHC: 1/50-1/100 IP: 1/20

Host Species: Rabbit

Clonality: Rabbit Monoclonal

Clone ID: R02-5G1

MW: Calculated MW: 9 kDa; Observed MW: 9 kDa

Isotype: IgG

Purification: Affinity Purified

Species Reactivity: Human,Mouse

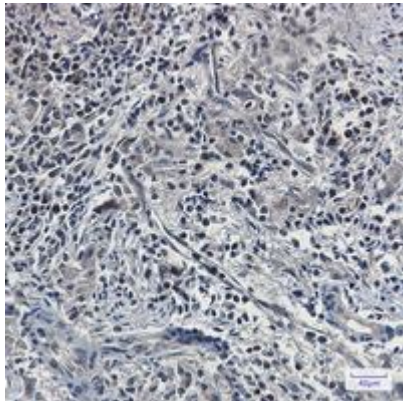
Conjugation: Unconjugated

Modification: Unmodified

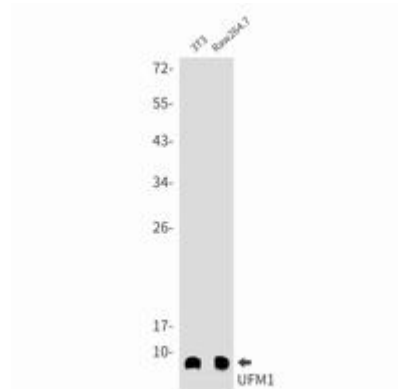
Constituents: PBS (without Mg²⁺ and Ca²⁺), pH 7.3 containing 50% glycerol, 0.5% BSA and 0.02% sodium azide

Research Areas: Cell Biology

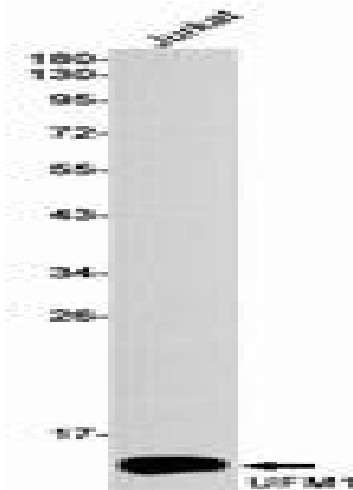
Storage & Shipping: Store at -20°C. Avoid repeated freezing and thawing



Immunohistochemistry analysis of paraffin-embedded Human lung cancer using UFM1 antibody. High-pressure and temperature Sodium Citrate pH 6.0 was used for antigen retrieval.



Western blot analysis of UFM1 in 3T3, Raw264.7 lysates using UFM1 antibody.



Western blot analysis of UFM1 in Jurkat lysates using UFM1 antibody.