

## UCHL5 RABBIT MAB

**Cat.#:** N263049

**Product Name:** Anti-UCHL5 Rabbit Monoclonal Antibody

**Synonyms:** UCH37; CGI-70; INO80R; UCH-L5

**UNIPROT ID:** Q9Y5K5

**Background:** Protease that specifically cleaves 'Lys-48'-linked polyubiquitin chains.

**Immunogen:** A synthetic peptide of human UCH37

**Applications:** WB, ICC/IF, IP

**Recommended Dilutions:** WB: 1/500-1/1000 IF: 1/50-1/200 IP: 1/20

**Host Species:** Rabbit

**Clonality:** Rabbit Monoclonal

**Clone ID:** R03-9C1

**MW:** Calculated MW: 38 kDa; Observed MW: 38 kDa

**Isotype:** IgG

**Purification:** Affinity Purified

**Species Reactivity:** Human, Mouse, Rat

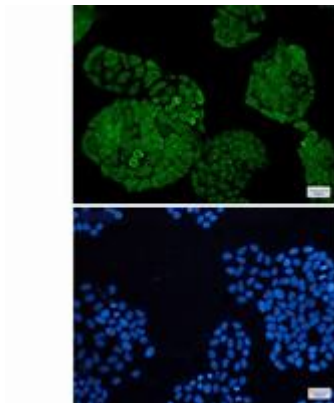
**Conjugation:** Unconjugated

**Modification:** Unmodified

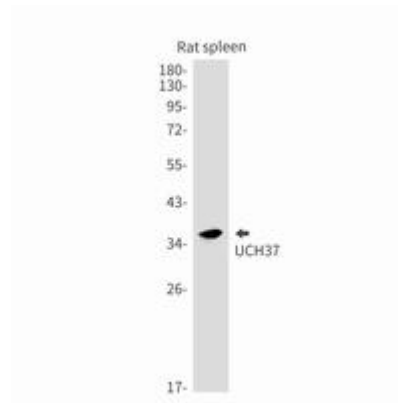
**Constituents:** PBS (without Mg<sup>2+</sup> and Ca<sup>2+</sup>), pH 7.3 containing 50% glycerol, 0.5% BSA and 0.02% sodium azide

**Research Areas:** Cell Biology

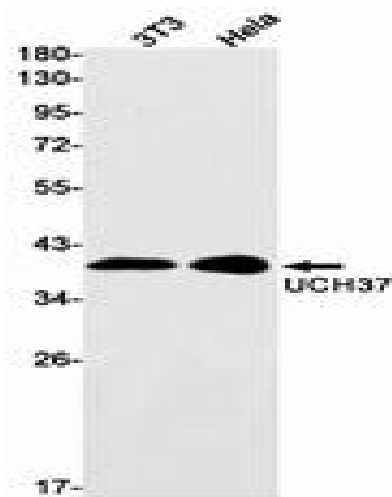
**Storage & Shipping:** Store at -20°C. Avoid repeated freezing and thawing



Immunocytochemistry analysis of UCH37 (green) in Hela using UCH37 rat spleen lysates using UCHL5 antibody, and DAPI (blue)



Western blot analysis of UCH37 in rat spleen lysates using UCHL5 antibody.



Western blot analysis of UCH37 in 3T3, Hela lysates using UCH37 antibody.