

UBR4 RABBIT PAB

Cat.#: S221576

Product Name: Anti-UBR4 Rabbit Polyclonal Antibody

Synonyms: p600; ZUBR1; RBAF600

UNIPROT ID: Q5T4S7 (Gene Accession - NP_065816)

Background: The protein encoded by this gene is an E3 ubiquitin-protein ligase that interacts with the retinoblastoma-associated protein in the nucleus and with calcium-bound calmodulin in the cytoplasm. The encoded protein appears to be a cytoskeletal component in the cytoplasm and part of the chromatin scaffold in the nucleus. In addition, this protein is a target of the human papillomavirus type 16 E7 oncoprotein.

Immunogen: Synthetic peptide of human UBR4

Applications: ELISA, IHC

Recommended Dilutions: IHC: 40-200; ELISA: 5000-10000

Host Species: Rabbit

Clonality: Rabbit Polyclonal

Isotype: Immunogen-specific rabbit IgG

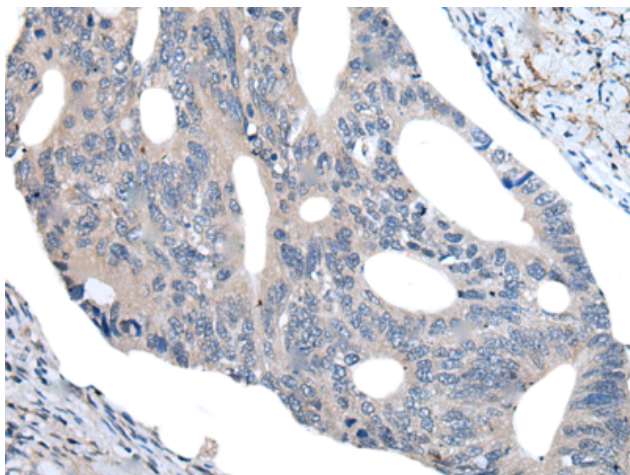
Purification: Antigen affinity purification

Species Reactivity: Human, Mouse, Rat

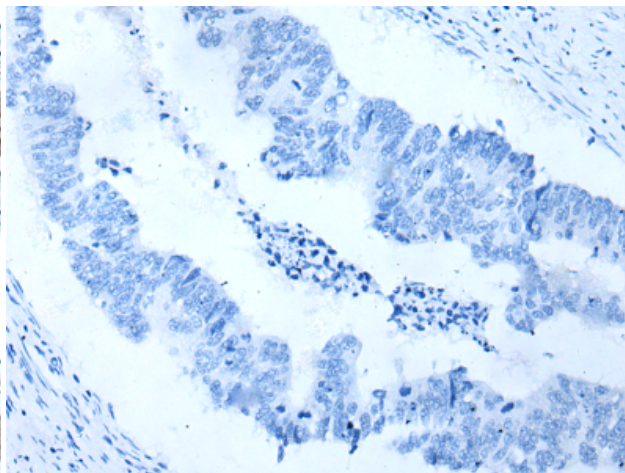
Constituents: PBS (without Mg²⁺ and Ca²⁺), pH 7.4, 150 mM NaCl, 0.05% Sodium Azide and 40% glycerol

Research Areas: Signal Transduction, Epigenetics and Nuclear Signaling

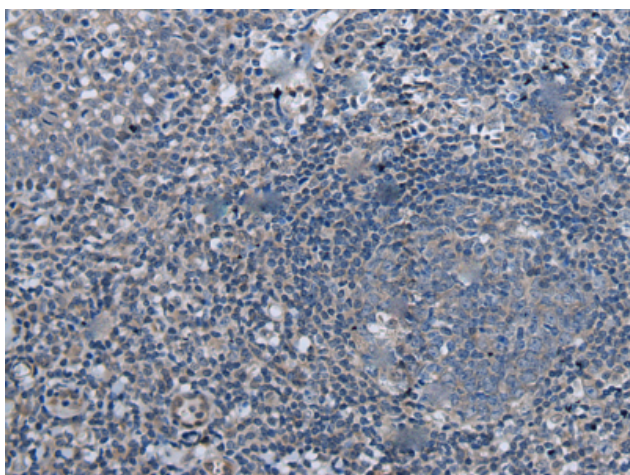
Storage & Shipping: Store at -20°C. Avoid repeated freezing and thawing



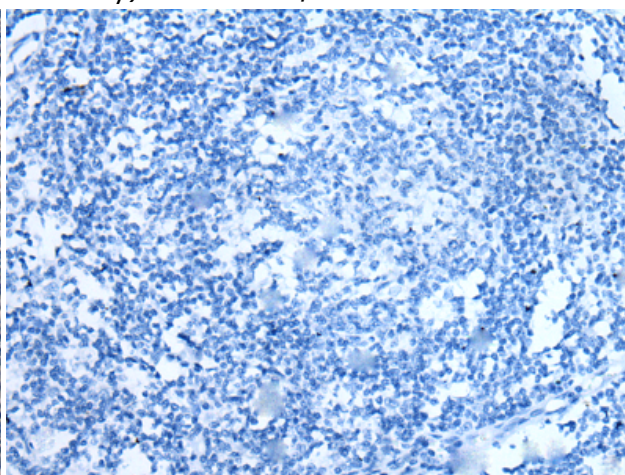
Immunohistochemistry analysis of paraffin-embedded Human colorectal cancer tissue using 221576 (UBR4 Antibody) at a dilution of 1/55 (Cytoplasm).



In comparison with the IHC on the left, the same paraffin-embedded Human colorectal cancer tissue is first treated with the synthetic peptide and then with 221576 (Anti-UBR4 Antibody) at dilution 1/55.



The image on the left is immunohistochemistry of paraffin-embedded Human tonsil tissue using 221576 (Anti-UBR4 Antibody) at a dilution of 1/55.



In comparison with the IHC on the left, the same paraffin-embedded Human tonsil tissue is first treated with synthetic peptide and then with D263223 (Anti-UBR4 Antibody) at dilution 1/55.