

## UBR2 RABBIT PAB

**Cat.#:** S218319

**Product Name:** Anti-UBR2 Rabbit Polyclonal Antibody

**Synonyms:** C6orf133; bA49A4.1; dJ242G1.1; dJ392M17.3

**UNIPROT ID:** Q8IWW8 (Gene Accession - BC064512 )

**Background:** This gene encodes an E3 ubiquitin ligase of the N-end rule proteolytic pathway that targets proteins with destabilizing N-terminal residues for polyubiquitylation and proteasome-mediated degradation. Alternative splicing results in multiple transcript variants.

**Immunogen:** Fusion protein of human UBR2

**Applications:** ELISA, IHC

**Recommended Dilutions:** IHC: 40-250; ELISA: 5000-10000

**Host Species:** Rabbit

**Clonality:** Rabbit Polyclonal

**Isotype:** Immunogen-specific rabbit IgG

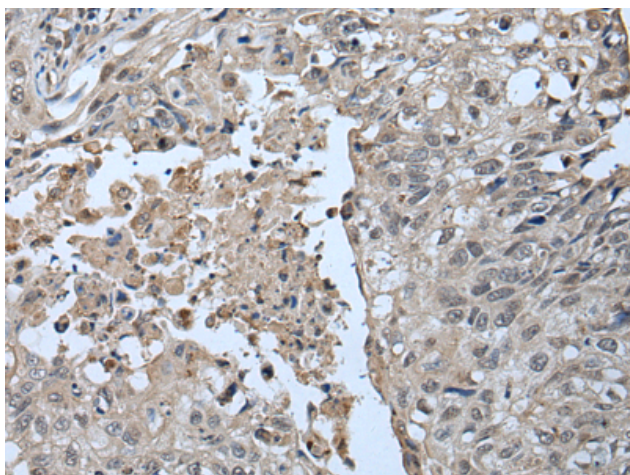
**Purification:** Antigen affinity purification

**Species Reactivity:** Human, Mouse

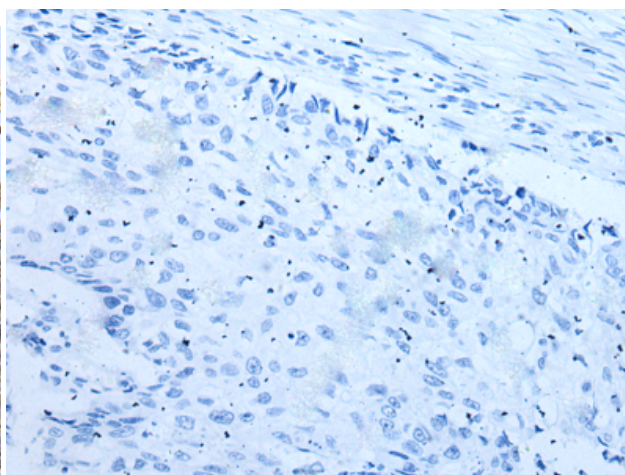
**Constituents:** PBS (without Mg<sup>2+</sup> and Ca<sup>2+</sup>), pH 7.4, 150 mM NaCl, 0.05% Sodium Azide and 40% glycerol

**Research Areas:** Cell Biology

**Storage & Shipping:** Store at -20°C. Avoid repeated freezing and thawing



Immunohistochemistry analysis of paraffin embedded Human lung cancer tissue using 218319(UBR2 Antibody) at a dilution of 1/55(Cytoplasm and Nucleus).



In comparison with the IHC on the left, the same paraffin-embedded Human lung cancer tissue is first treated with the fusion protein and then with 218319(Anti-UBR2 Antibody) at dilution 1/55.