

## UBIQUITIN PROTEIN LIGASE E3A RABBIT MAB

**Cat.#:** N263598

**Product Name:** Anti-Ubiquitin Protein Ligase E3A Rabbit Monoclonal Antibody

**Synonyms:** Ubiquitin-protein ligase E3A; UBE3A; E6AP; EPVE6AP; HPVE6A

**UNIPROT ID:** Q05086

**Background:** E3 ubiquitin-protein ligase which accepts ubiquitin from an E2 ubiquitin-conjugating enzyme in the form of a thioester and transfers it to its substrates. Several substrates have been identified including the RAD23A and RAD23B, MCM7 (which is involved in DNA replication), annexin A1, the PML tumor suppressor, and the cell cycle regulator CDKN1B.

**Immunogen:** Recombinant protein of human UBE3A

**Applications:** WB, ICC/IF, IP

**Recommended Dilutions:** WB: 1/500-1/1000 IF: 1/50-1/200 IP: 1/20

**Host Species:** Rabbit

**Clonality:** Rabbit Monoclonal

**Clone ID:** R02-1A0

**MW:** Calculated MW: 101 kDa; Observed MW: 101 kDa

**Isotype:** IgG

**Purification:** Affinity Purified

**Species Reactivity:** Human, Mouse, Rat

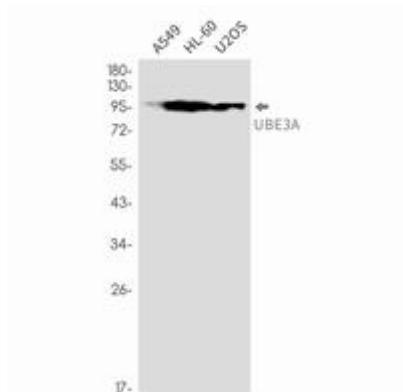
**Conjugation:** Unconjugated

**Modification:** Unmodified

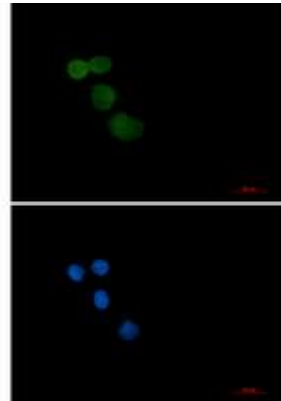
**Constituents:** PBS (without Mg<sup>2+</sup> and Ca<sup>2+</sup>), pH 7.3 containing 50% glycerol, 0.5% BSA and 0.02% sodium azide

**Research Areas:** Epigenetics and Nuclear Signaling

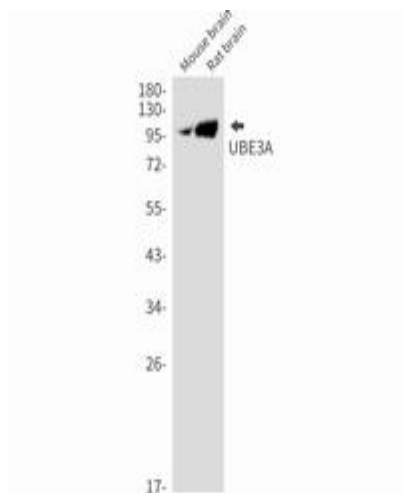
**Storage & Shipping:** Store at -20°C. Avoid repeated freezing and thawing



Western blot analysis of UBE3A in A549, HL-60, U2OS lysates using UBE3A antibody



Immunocytochemistry analysis of Ubiquitin Protein Ligase E3A (green) in HeLa using Ubiquitin Protein Ligase E3A antibody, and DAPI (blue).



Western blot analysis of UBE3A in mouse brain, rat brain lysates using UBE3A antibody.