

## UBIQUITIN 60S RIBOSOMAL PROTEIN L40 RABBIT MAB

**Cat.#:** N263593

**Product Name:** Anti-Ubiquitin 60S Ribosomal Protein L40 Rabbit Monoclonal Antibody

**Synonyms:** L40; CEP52; RPL40; HUBCEP52

**UNIPROT ID:** P62987

**Background:** Ubiquitin: Exists either covalently attached to another protein, or free (unanchored).

**Immunogen:** A synthetic peptide of human UBA52

**Applications:** WB, ICC/IF, IP

**Recommended Dilutions:** WB: 1/500-1/1000 IF: 1/50-1/200 IP: 1/20

**Host Species:** Rabbit

**Clonality:** Rabbit Monoclonal

**Clone ID:** R05-5D6

**MW:** Calculated MW: 15 kDa; Observed MW: 10 kDa

**Isotype:** IgG

**Purification:** Affinity Purified

**Species Reactivity:** Human

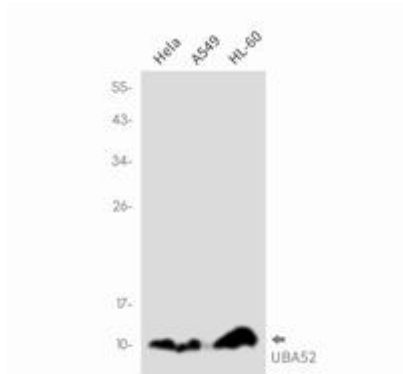
**Conjugation:** Unconjugated

**Modification:** Unmodified

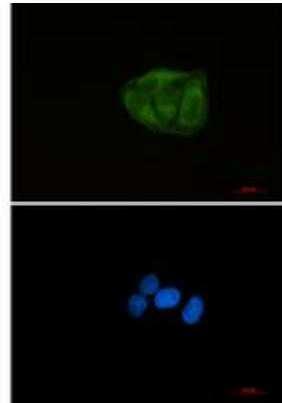
**Constituents:** PBS (without Mg<sup>2+</sup> and Ca<sup>2+</sup>), pH 7.3 containing 50% glycerol, 0.5% BSA and 0.02% sodium azide

**Research Areas:** Epigenetics and Nuclear Signaling

**Storage & Shipping:** Store at -20°C. Avoid repeated freezing and thawing



Western blot analysis of UBA52 in HeLa, A549, HL-60 lysates using UBA52 antibody.



Immunocytochemistry analysis of Ubiquitin 60S Ribosomal Protein L40 (green) in HeLa using Ubiquitin 60S Ribosomal Protein L40 antibody, and DAPI (blue).