

UBE2N RABBIT PAB

Cat.#: S215332

Product Name: Anti-UBE2N Rabbit Polyclonal Antibody

Synonyms: UBC13; Ubch13; HEL-S-71; Ubch-ben; UBCHBEN; UBC13

UNIPROT ID: P61088 (Gene Accession - NP_003339)

Background: The modification of proteins with ubiquitin is an important cellular mechanism for targeting abnormal or short-lived proteins for degradation. Ubiquitination involves at least three classes of enzymes: ubiquitin-activating enzymes, or E1s, ubiquitin-conjugating enzymes, or E2s, and ubiquitin-protein ligases, or E3s. This gene encodes a member of the E2 ubiquitin-conjugating enzyme family. Studies in mouse suggest that this protein plays a role in DNA postreplication repair.

Immunogen: Synthetic peptide of human UBE2N

Applications: ELISA, WB, IHC

Recommended Dilutions: IHC: 50-200;WB: 500-2000;ELISA: 5000-10000

Host Species: Rabbit

Clonality: Rabbit Polyclonal

Isotype: Immunogen-specific rabbit IgG

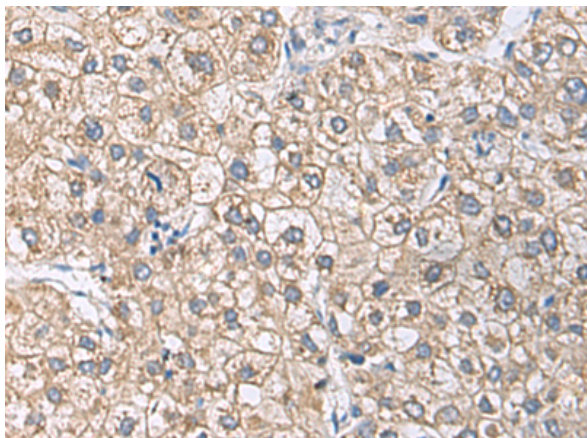
Purification: Antigen affinity purification

Species Reactivity: Human, Mouse, Rat

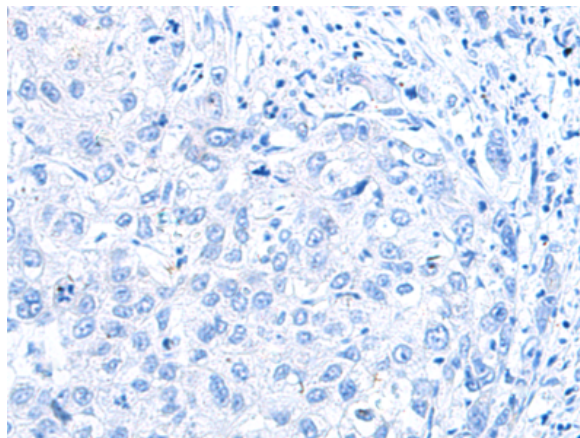
Constituents: PBS (without Mg²⁺ and Ca²⁺), pH 7.4, 150 mM NaCl, 0.05% Sodium Azide and 40% glycerol

Research Areas: Epigenetics and Nuclear Signaling, Cell Biology, Immunology

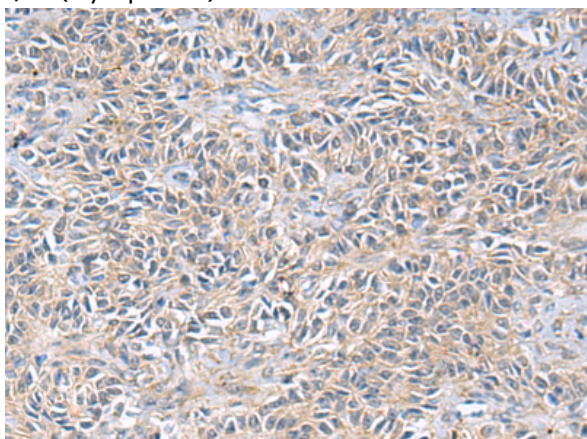
Storage & Shipping: Store at -20°C. Avoid repeated freezing and thawing



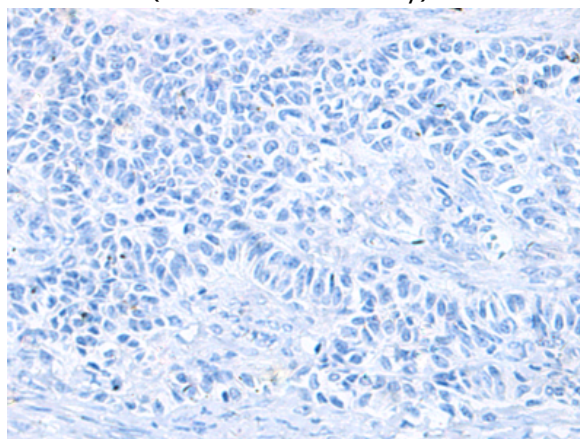
Immunohistochemistry analysis of paraffin embedded Human liver cancer tissue using 215332(UBE2N Antibody) at a dilution of 1/55(Cytoplasm).



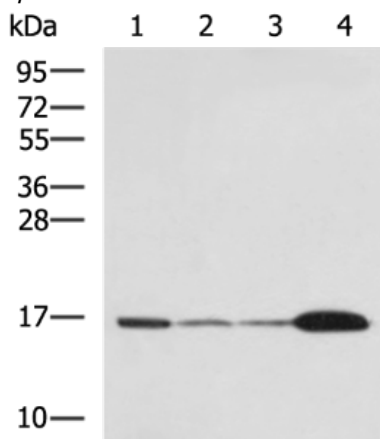
In comparison with the IHC on the left, the same paraffin-embedded Human liver cancer tissue is first treated with the synthetic peptide and then with 215332(Anti-UBE2N Antibody) at dilution 1/55.



The image on the left is immunohistochemistry of paraffin-embedded Human ovarian cancer tissue using 215332(Anti-UBE2N Antibody) at a dilution of 1/55.



In comparison with the IHC on the left, the same paraffin-embedded Human ovarian cancer tissue is first treated with synthetic peptide and then with D163219(Anti-UBE2N Antibody) at dilution 1/55.



Gel: 12%SDS-PAGE, Lysate: 40 µg;
 Lane 1-5: Mouse brain tissue, Hela cell, LNCAP cell,
 HepG2 cell, Jurkat cell lysates;
 Primary antibody: 215332(UBE2N Antibody) at
 dilution 1/800;
 Secondary antibody: HRP-conjugated Goat anti
 rabbit IgG at 1/5000 dilution;
 Exposure time: 30 seconds



Product Description

Pioneering GTPase and Oncogene Product Development since 2010
