

UBE2M RABBIT PAB

Cat.#: S218315

Product Name: Anti-UBE2M Rabbit Polyclonal Antibody

Synonyms: UBC12; hUbc12; UBC-RS2

UNIPROT ID: P61081 (Gene Accession - BC058924)

Background: The modification of proteins with ubiquitin is an important cellular mechanism for targeting abnormal or short-lived proteins for degradation. Ubiquitination involves at least three classes of enzymes: ubiquitin-activating enzymes, or E1s, ubiquitin-conjugating enzymes, or E2s, and ubiquitin-protein ligases, or E3s. This gene encodes a member of the E2 ubiquitin-conjugating enzyme family. The encoded protein is linked with a ubiquitin-like protein, NEDD8, which can be conjugated to cellular proteins, such as Cdc53/culin. [provided by RefSeq, Jul 2008]

Immunogen: Fusion protein of human UBE2M

Applications: ELISA, IHC

Recommended Dilutions: IHC: 50-100; ELISA: 5000-10000

Host Species: Rabbit

Clonality: Rabbit Polyclonal

Isotype: Immunogen-specific rabbit IgG

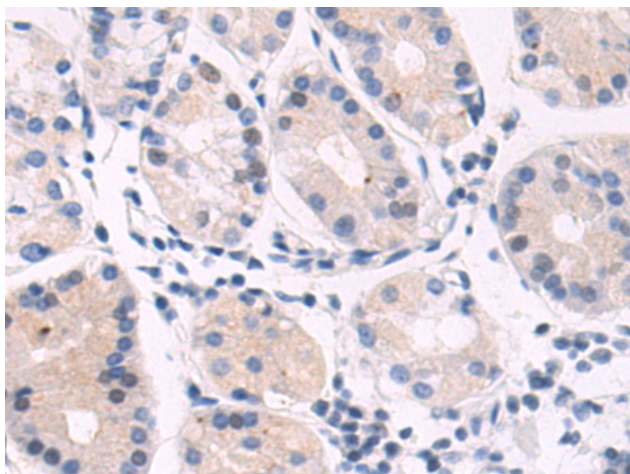
Purification: Antigen affinity purification

Species Reactivity: Human, Mouse

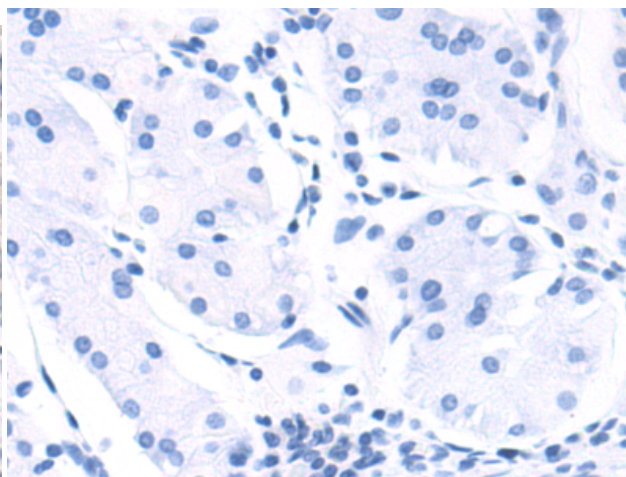
Constituents: PBS (without Mg²⁺ and Ca²⁺), pH 7.4, 150 mM NaCl, 0.05% Sodium Azide and 40% glycerol

Research Areas: Epigenetics and Nuclear Signaling, Cell Biology

Storage & Shipping: Store at -20°C. Avoid repeated freezing and thawing



Immunohistochemistry analysis of paraffin embedded Human gastric cancer tissue using 218315 (UBE2M Antibody) at a dilution of 1/80 (Cytoplasm and Nucleus).



In comparison with the IHC on the left, the same paraffin-embedded Human gastric cancer tissue is first treated with the fusion protein and then with 218315 (Anti-UBE2M Antibody) at dilution 1/80.