

UBE2I RABBIT PAB

Cat.#: S221208

Product Name: Anti-UBE2I Rabbit Polyclonal Antibody

Synonyms: P18; UBC9; C358B7.1

UNIPROT ID: P63279 (Gene Accession - NP_003336)

Background: The modification of proteins with ubiquitin is an important cellular mechanism for targeting abnormal or short-lived proteins for degradation. Ubiquitination involves at least three classes of enzymes: ubiquitin-activating enzymes, or E1s, ubiquitin-conjugating enzymes, or E2s, and ubiquitin-protein ligases, or E3s. This gene encodes a member of the E2 ubiquitin-conjugating enzyme family. Four alternatively spliced transcript variants encoding the same protein have been found for this gene.

Immunogen: Synthetic peptide of human UBE2I

Applications: ELISA, WB, IHC

Recommended Dilutions: IHC: 25-100;WB: 500-2000;ELISA: 2000-5000

Host Species: Rabbit

Clonality: Rabbit Polyclonal

Isotype: Immunogen-specific rabbit IgG

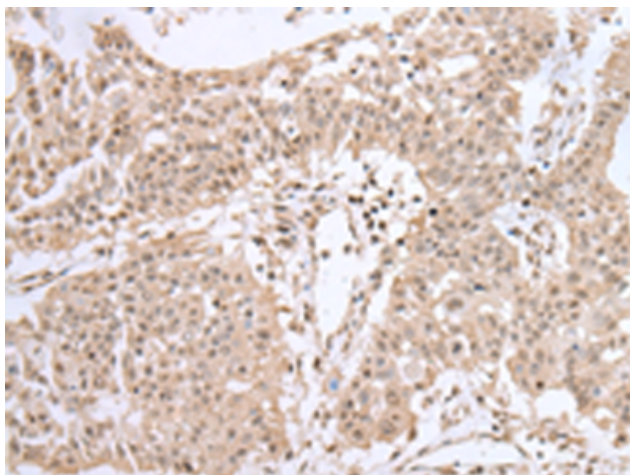
Purification: Antigen affinity purification

Species Reactivity: Human, Mouse, Rat

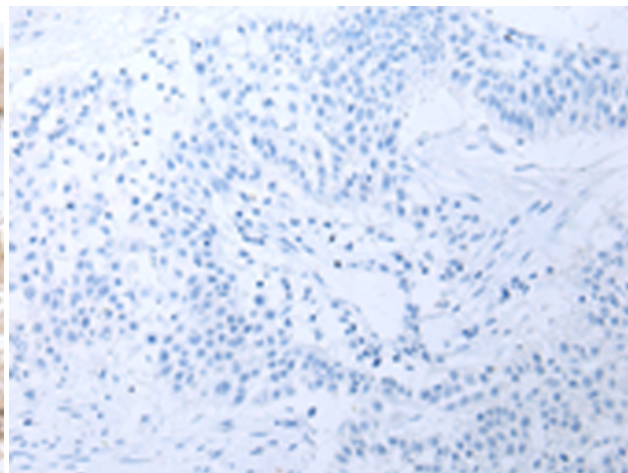
Constituents: PBS (without Mg²⁺ and Ca²⁺), pH 7.4, 150 mM NaCl, 0.05% Sodium Azide and 40% glycerol

Research Areas: Epigenetics and Nuclear Signaling, Metabolism, Cell Biology

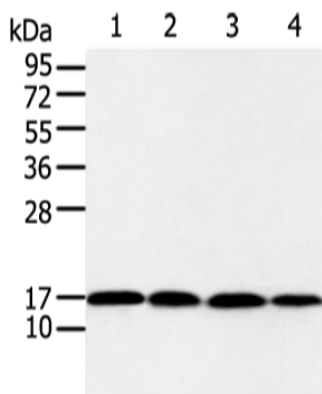
Storage & Shipping: Store at -20°C. Avoid repeated freezing and thawing



Immunohistochemistry analysis of paraffin embedded Human colorectal cancer tissue using 221208(UBE2I Antibody) at a dilution of 1/40(Nucleus and Cytoplasm).



In comparison with the IHC on the left, the same paraffin-embedded Human colorectal cancer tissue is first treated with the synthetic peptide and then with 221208(Anti-UBE2I Antibody) at dilution 1/40.



Gel: 12%SDS-PAGE, Lysate: 40 µg;
Lane 1-4: TM4, hela, 293T and Jurkat cell;
Primary antibody: 221208(UBE2I Antibody) at dilution 1/650;
Secondary antibody: Goat anti rabbit IgG at 1/8000 dilution;
Exposure time: 10 seconds