

## UBAC2 RABBIT PAB

**Cat.#:** S221571

**Product Name:** Anti-UBAC2 Rabbit Polyclonal Antibody

**Synonyms:** PHGDHL1

**UNIPROT ID:** Q8NBM4 (Gene Accession - NP\_001137544 )

**Background:** UBAC2 (ubiquitin-associated domain-containing protein 2), also known as PHGDHL1 (phosphoglycerate dehydrogenase-like protein 1), is a 344 amino acid multi-pass membrane protein that contains one UBA domain and is expressed as multiple alternatively spliced isoforms. The gene encoding UBAC2 maps to human chromosome 13, which houses over 400 genes, such as BRCA2 and RBI, and comprises nearly 4% of the human genome. As with most chromosomes, polysomy of part or all of chromosome 13 is deleterious to development and decreases the odds of survival. Trisomy 13, also known as Patau syndrome, is deadly and the few who survive past one year suffer from permanent neurologic defects, difficulty eating and vulnerability to serious respiratory infections.

**Immunogen:** Synthetic peptide of human UBAC2

**Applications:** ELISA, WB, IHC

**Recommended Dilutions:** IHC: 30-150;WB: 500-2000;ELISA: 5000-10000

**Host Species:** Rabbit

**Clonality:** Rabbit Polyclonal

**Isotype:** Immunogen-specific rabbit IgG

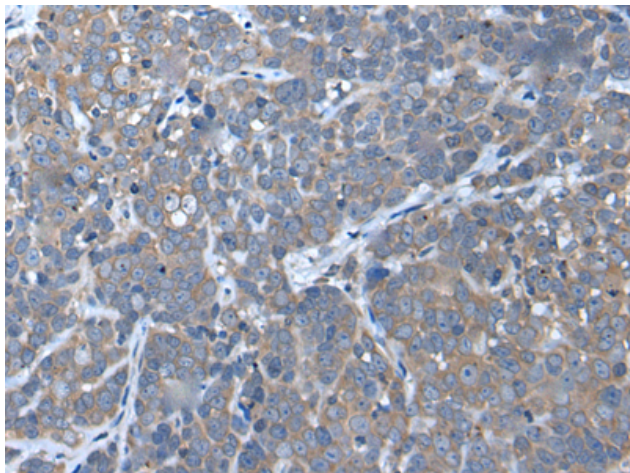
**Purification:** Antigen affinity purification

**Species Reactivity:** Human, Mouse

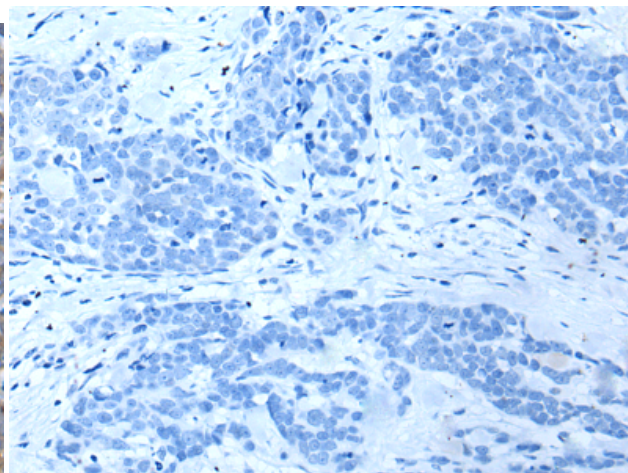
**Constituents:** PBS (without Mg<sup>2+</sup> and Ca<sup>2+</sup>), pH 7.4, 150 mM NaCl, 0.05% Sodium Azide and 40% glycerol

**Research Areas:** Signal Transduction

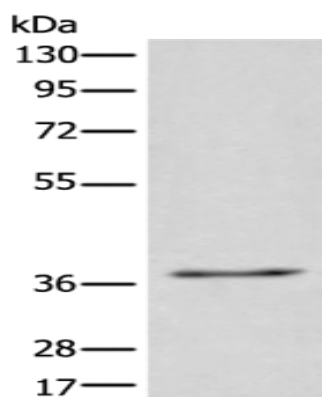
**Storage & Shipping:** Store at -20°C. Avoid repeated freezing and thawing



Immunohistochemistry analysis of paraffin embedded Human thyroid cancer tissue using 221571(UBAC2 Antibody) at a dilution of 1/50(Cytoplasm).



In comparison with the IHC on the left, the same paraffin-embedded Human thyroid cancer tissue is first treated with the synthetic peptide and then with 221571(Anti-UBAC2 Antibody) at dilution 1/50.



Gel: 8%SDS-PAGE, Lysate: 40  $\mu$ g;  
Lane: 231 cell lysate;  
Primary antibody: 221571(UBAC2 Antibody) at dilution 1/400;  
Secondary antibody: Goat anti rabbit IgG at 1/8000 dilution;  
Exposure time: 5 seconds