

## UBA6 RABBIT PAB

**Cat.#:** S218304

**Product Name:** Anti-UBA6 Rabbit Polyclonal Antibody

**Synonyms:** E1-L2; MOP-4; UBE1L2

**UNIPROT ID:** A0AVT1 (Gene Accession - BC031637 )

**Background:** Modification of proteins with ubiquitin (UBB; MIM 191339) or ubiquitin-like proteins controls many signaling networks and requires a ubiquitin-activating enzyme (E1), a ubiquitin conjugating enzyme (E2), and a ubiquitin protein ligase (E3). UBE1L2 is an E1 enzyme that initiates the activation and conjugation of ubiquitin-like proteins (Jin et al., 2007 [PubMed 17597759]). [supplied by OMIM, Mar 2008]

**Immunogen:** Fusion protein of human UBA6

**Applications:** ELISA, IHC

**Recommended Dilutions:** IHC: 50-200; ELISA: 5000-10000

**Host Species:** Rabbit

**Clonality:** Rabbit Polyclonal

**Isotype:** Immunogen-specific rabbit IgG

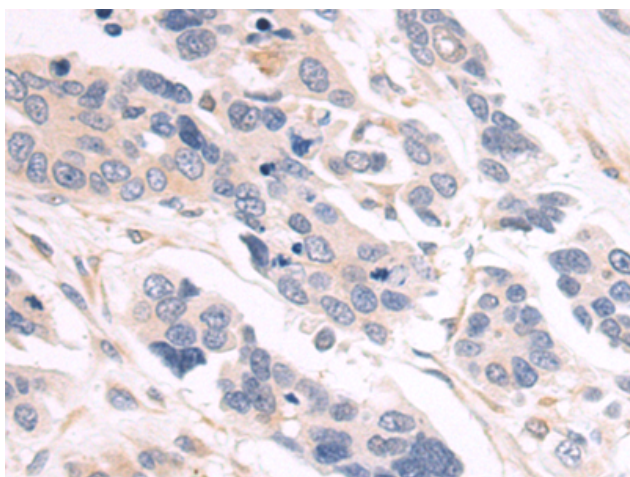
**Purification:** Antigen affinity purification

**Species Reactivity:** Human

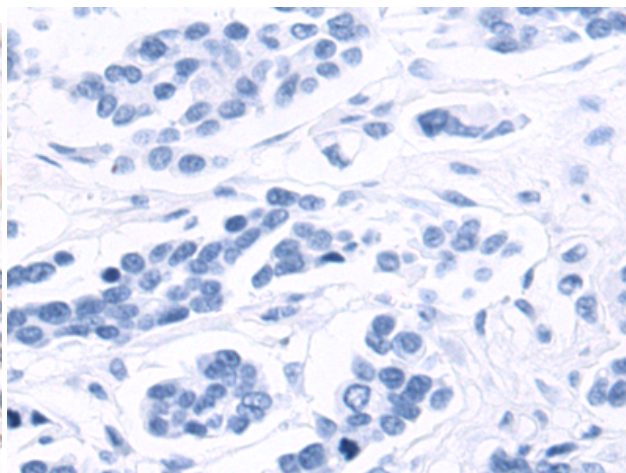
**Constituents:** PBS (without Mg<sup>2+</sup> and Ca<sup>2+</sup>), pH 7.4, 150 mM NaCl, 0.05% Sodium Azide and 40% glycerol

**Research Areas:** Epigenetics and Nuclear Signaling, Cell Biology

**Storage & Shipping:** Store at -20°C. Avoid repeated freezing and thawing



Immunohistochemistry analysis of paraffin embedded Human colorectal cancer tissue using 218304 (UBA6 Antibody) at a dilution of 1/80 (Cytoplasm).



In comparison with the IHC on the left, the same paraffin-embedded Human colorectal cancer tissue is first treated with the fusion protein and then with 218304 (Anti-UBA6 Antibody) at dilution 1/80.