

UBA1 RABBIT PAB

Cat.#: S221072

Product Name: Anti-UBA1 Rabbit Polyclonal Antibody

Synonyms: AIS9; AIST; GXPI; UBE1; AIS9T; AMCX1; POC20; SMAX2; UBA1A; UBE1X; CFAP124

UNIPROT ID: P22314 (Gene Accession - NP_695012)

Background: The protein encoded by this gene catalyzes the first step in ubiquitin conjugation to mark cellular proteins for degradation. This gene complements an X-linked mouse temperature-sensitive defect in DNA synthesis, and thus may function in DNA repair. It is part of a gene cluster on chromosome Xp11.23. Alternatively spliced transcript variants that encode the same protein have been described.

Immunogen: Synthetic peptide of human UBA1

Applications: ELISA, WB, IHC

Recommended Dilutions: IHC: 30-150;WB: 500-2000;ELISA: 2000-5000

Host Species: Rabbit

Clonality: Rabbit Polyclonal

Isotype: Immunogen-specific rabbit IgG

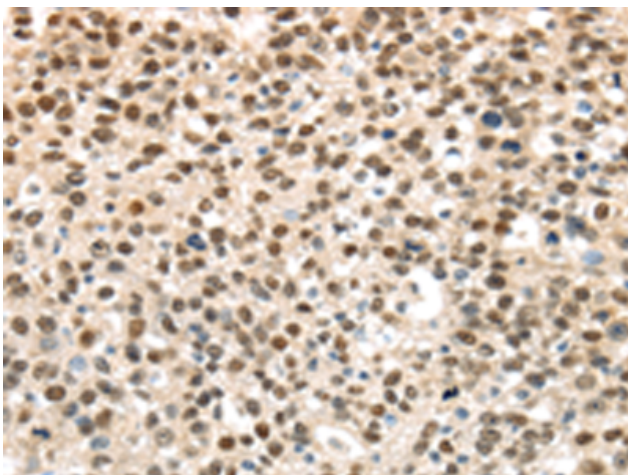
Purification: Antigen affinity purification

Species Reactivity: Human, Mouse, Rat

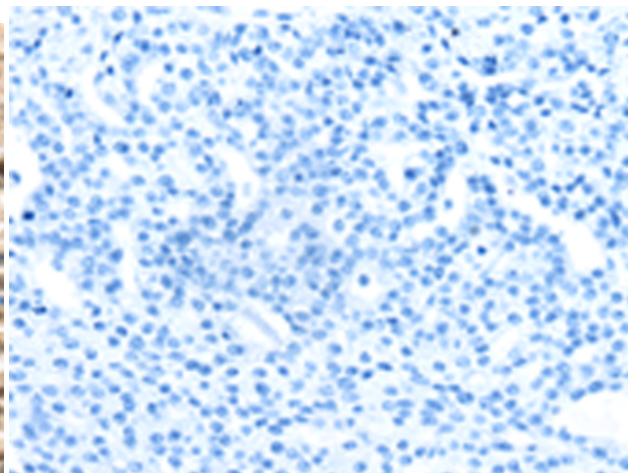
Constituents: PBS (without Mg²⁺ and Ca²⁺), pH 7.4, 150 mM NaCl, 0.05% Sodium Azide and 40% glycerol

Research Areas: Epigenetics and Nuclear Signaling, Cell Biology

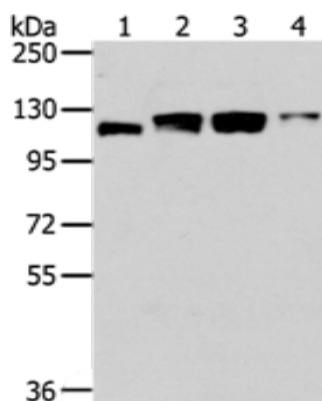
Storage & Shipping: Store at -20°C. Avoid repeated freezing and thawing



Immunohistochemistry analysis of paraffin embedded Human breast cancer tissue using 221072(UBA1 Antibody) at a dilution of 1/40(Nucleus).



In comparison with the IHC on the left, the same paraffin-embedded Human breast cancer tissue is first treated with the synthetic peptide and then with 221072(Anti-UBA1 Antibody) at dilution 1/40.



Gel: 6%SDS-PAGE, Lysate: 40 μ g;
Lane 1-4: Human fetal brain tissue, 231 cells,
293T cells, Hela cells;
Primary antibody: 221072(UBA1 Antibody) at
dilution 1/400;
Secondary antibody: Goat anti rabbit IgG at
1/8000 dilution;
Exposure time: 1 minute