

TYK2 RABBIT PAB

Cat.#: S217965

Product Name: Anti-TYK2 Rabbit Polyclonal Antibody

Synonyms: JTK1; IMD35

UNIPROT ID: P29597 (Gene Accession - BC014243)

Background: This gene encodes a member of the tyrosine kinase and, more specifically, the Janus kinases (JAKs) protein families. This protein associates with the cytoplasmic domain of type I and type II cytokine receptors and promulgate cytokine signals by phosphorylating receptor subunits. It is also component of both the type I and type III interferon signaling pathways. As such, it may play a role in anti-viral immunity. A mutation in this gene has been associated with hyperimmunoglobulin E syndrome (HIES) - a primary immunodeficiency characterized by elevated serum immunoglobulin E.

Immunogen: Fusion protein of human TYK2

Applications: ELISA, IHC

Recommended Dilutions: IHC: 150-300; ELISA: 5000-10000

Host Species: Rabbit

Clonality: Rabbit Polyclonal

Isotype: Immunogen-specific rabbit IgG

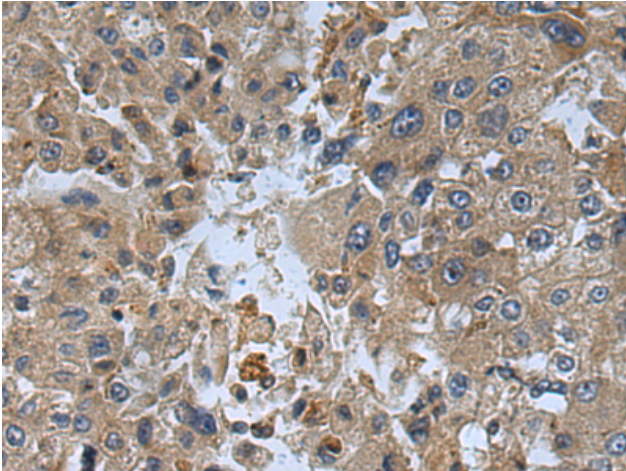
Purification: Antigen affinity purification

Species Reactivity: Human, Mouse

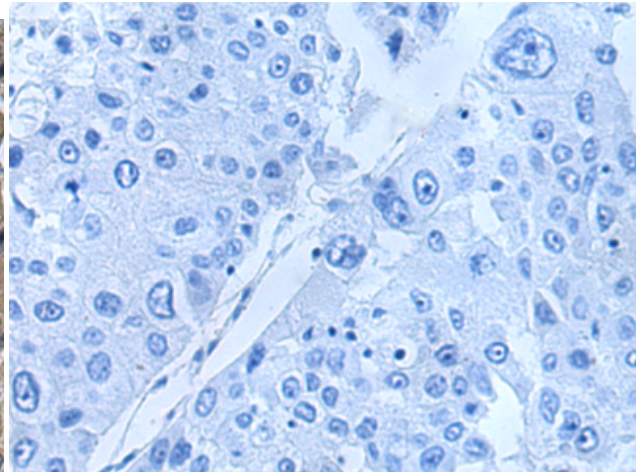
Constituents: PBS (without Mg²⁺ and Ca²⁺), pH 7.4, 150 mM NaCl, 0.05% Sodium Azide and 40% glycerol

Research Areas: Signal Transduction

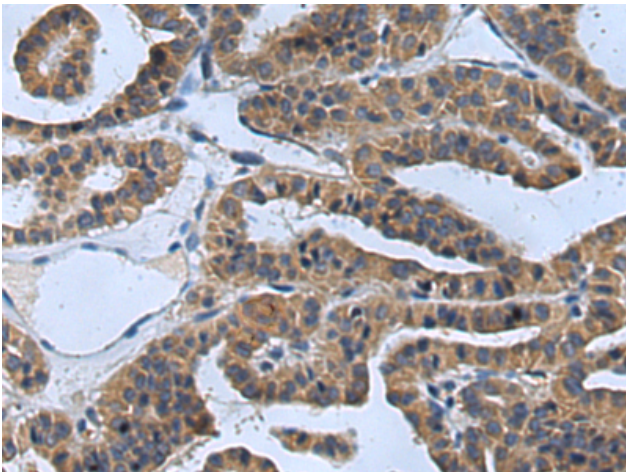
Storage & Shipping: Store at -20°C. Avoid repeated freezing and thawing



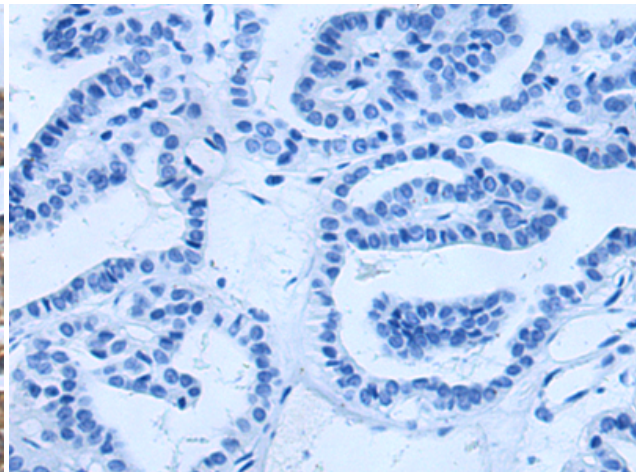
Immunohistochemistry analysis of paraffin embedded Human liver cancer tissue using 217965(TYK2 Antibody) at a dilution of 1/130(Cytoplasm).



In comparison with the IHC on the left, the same paraffin-embedded Human liver cancer tissue is first treated with the fusion protein and then with 217965(Anti-TYK2 Antibody) at dilution 1/130.



The image on the left is immunohistochemistry of paraffin-embedded Human thyroid cancer tissue using 217965(Anti-TYK2 Antibody) at a dilution of 1/130.



In comparison with the IHC on the left, the same paraffin-embedded Human thyroid cancer tissue is first treated with fusion protein and then with D223461(Anti-TYK2 Antibody) at dilution 1/130.