

TXNDC9 RABBIT MAB

Cat.#: N263039

Product Name: Anti-TXNDC9 Rabbit Monoclonal Antibody

Synonyms: APACD; PHLP3

UNIPROT ID: O14530

Background: Significantly diminishes the chaperonin TCP1 complex ATPase activity, thus negatively impacts protein folding, including that of actin or tubulin.

Immunogen: A synthetic peptide of human TXNDC9

Applications: WB,IHC-P

Recommended Dilutions: WB: 1/500-1/1000 IHC: 1/50-1/100

Host Species: Rabbit

Clonality: Rabbit Monoclonal

Clone ID: R04-4H8

MW: Calculated MW: 27 kDa; Observed MW: 27 kDa

Isotype: IgG

Purification: Affinity Purified

Species Reactivity: Human

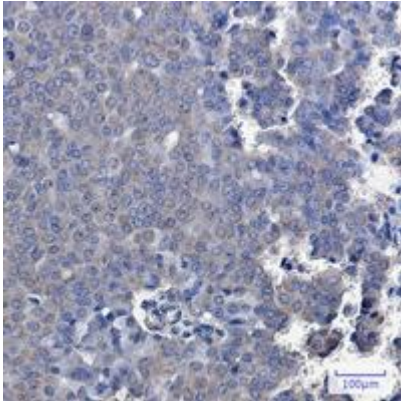
Conjugation: Unconjugated

Modification: Unmodified

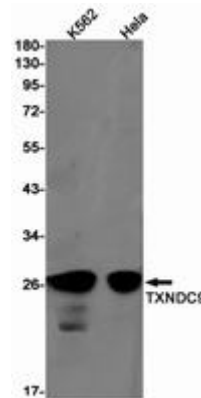
Constituents: PBS (without Mg²⁺ and Ca²⁺), pH 7.3 containing 50% glycerol, 0.5% BSA and 0.02% sodium azide

Research Areas: Cell Biology

Storage & Shipping: Store at -20°C. Avoid repeated freezing and thawing



Immunohistochemistry analysis of paraffin-embedded Human breast cancer using TXNDC9 antibody. High-pressure and temperature Sodium Citrate pH 6.0 was used for antigen retrieval.



Western blot analysis of TXNDC9 in K562, HeLa lysates using TXNDC9 antibody.