

TUFT1 RABBIT PAB

Cat.#: S212383

Product Name: Anti-TUFT1 Rabbit Polyclonal Antibody

Synonyms:

UNIPROT ID: Q9NNX1 (Gene Accession - BC008301)

Background: Tuftelin is an acidic protein that is thought to play a role in dental enamel mineralization and is implicated in caries susceptibility. It is also thought to be involved with adaptation to hypoxia, mesenchymal stem cell function, and neurotrophin nerve growth factor mediated neuronal differentiation.

Immunogen: Fusion protein of human TUFT1

Applications: ELISA, IHC

Recommended Dilutions: IHC: 100-300; ELISA: 5000-10000

Host Species: Rabbit

Clonality: Rabbit Polyclonal

Isotype: Immunogen-specific rabbit IgG

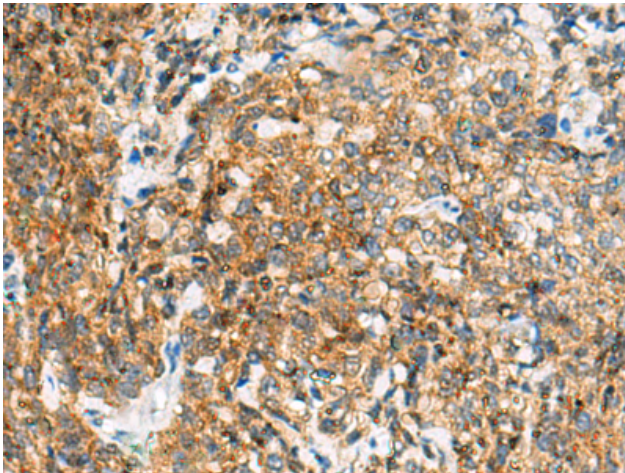
Purification: Antigen affinity purification

Species Reactivity: Human, Mouse

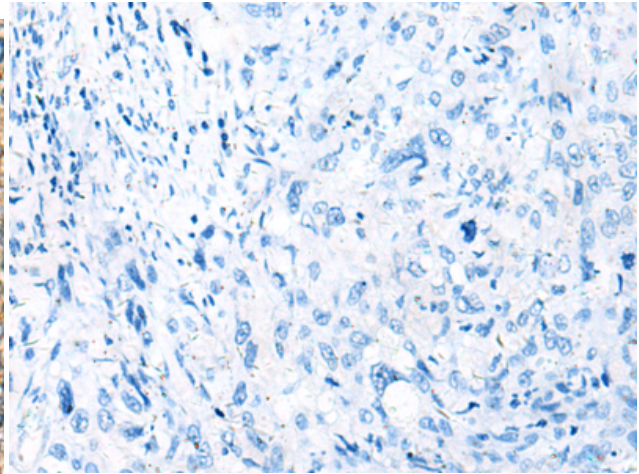
Constituents: PBS (without Mg²⁺ and Ca²⁺), pH 7.4, 150 mM NaCl, 0.05% Sodium Azide and 40% glycerol

Research Areas: Signal Transduction

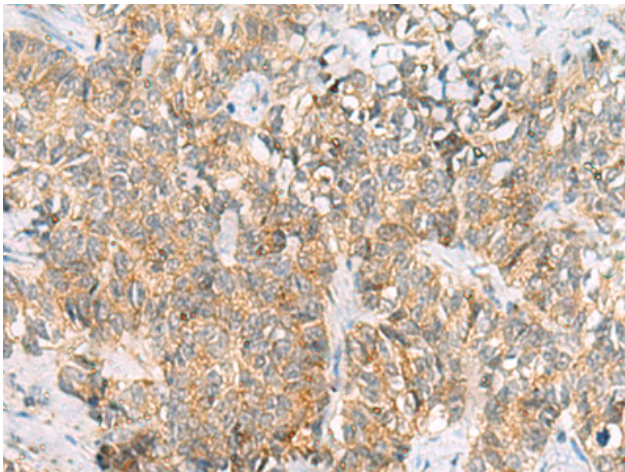
Storage & Shipping: Store at -20°C. Avoid repeated freezing and thawing



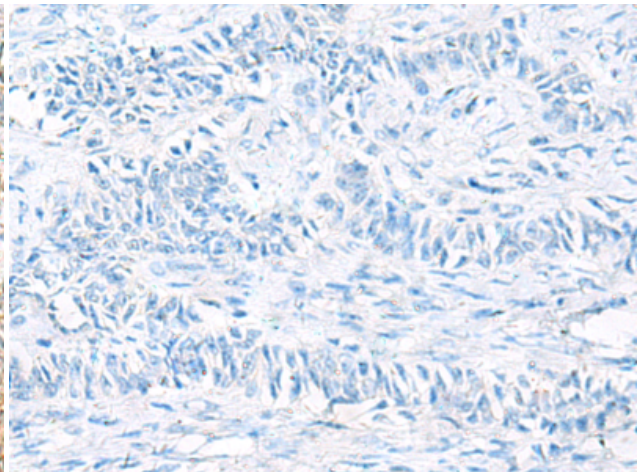
Immunohistochemistry analysis of paraffin-embedded Human cervical cancer tissue using 212383 (TUFT1 Antibody) at a dilution of 1/120 (Cytoplasm).



In comparison with the IHC on the left, the same paraffin-embedded Human cervical cancer tissue is first treated with the fusion protein and then with 212383 (Anti-TUFT1 Antibody) at dilution 1/120.



The image on the left is immunohistochemistry of paraffin-embedded Human ovarian cancer tissue using 212383 (Anti-TUFT1 Antibody) at a dilution of 1/120.



In comparison with the IHC on the left, the same paraffin-embedded Human ovarian cancer tissue is first treated with fusion protein and then with D124922 (Anti-TUFT1 Antibody) at dilution 1/120.