

## TUBD1 RABBIT PAB

**Cat.#:** S219104

**Product Name:** Anti-TUBD1 Rabbit Polyclonal Antibody

**Synonyms:** TUBD

**UNIPROT ID:** Q9UJT1 (Gene Accession - BC000258 )

**Background:** In the elongating spermatid it is associated with the manchette, a specialized microtubule system present during reshaping of the sperm head.

**Immunogen:** Fusion protein of human TUBD1

**Applications:** ELISA, WB, IHC

**Recommended Dilutions:** IHC: 50-300;WB: 1000-5000;ELISA: 5000-10000

**Host Species:** Rabbit

**Clonality:** Rabbit Polyclonal

**Isotype:** Immunogen-specific rabbit IgG

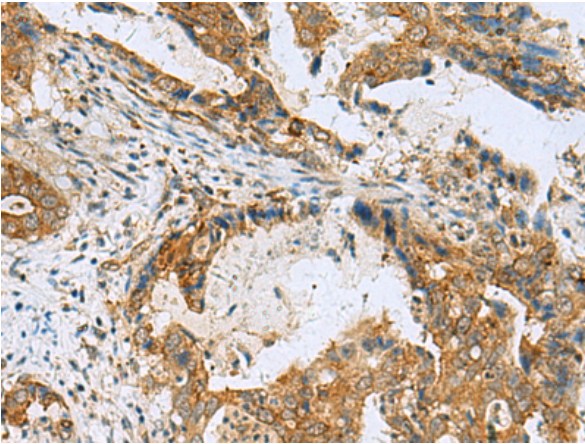
**Purification:** Antigen affinity purification

**Species Reactivity:** Human, Mouse

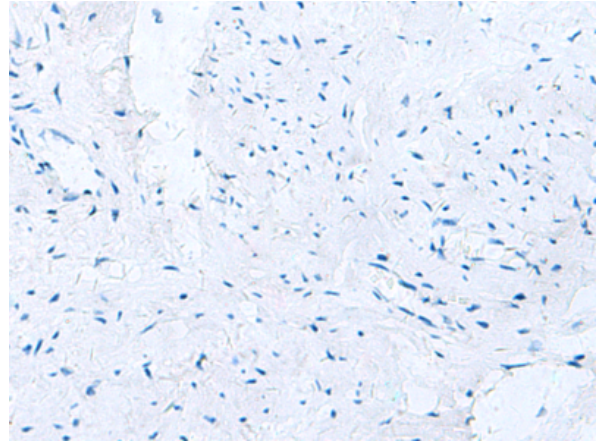
**Constituents:** PBS (without Mg<sup>2+</sup> and Ca<sup>2+</sup>), pH 7.4, 150 mM NaCl, 0.05% Sodium Azide and 40% glycerol

**Research Areas:** Signal Transduction

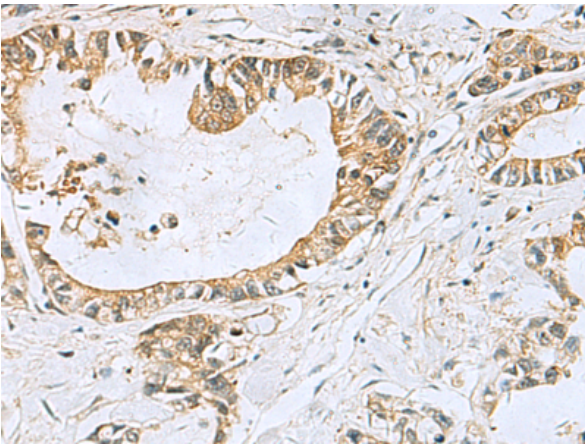
**Storage & Shipping:** Store at -20°C. Avoid repeated freezing and thawing



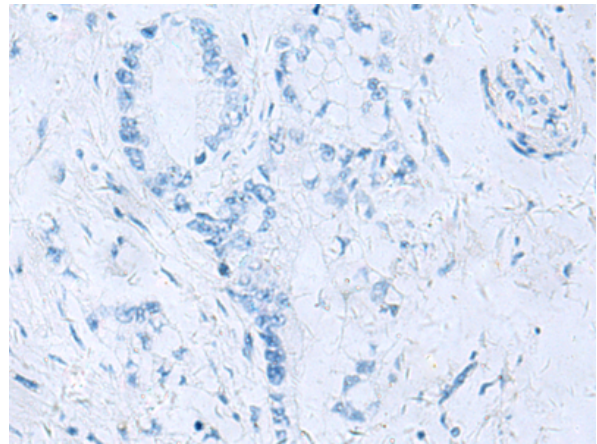
Immunohistochemistry analysis of paraffin embedded Human cervical cancer tissue using 219104(TUBD1 Antibody) at a dilution of 1/70(Cytoplasm).



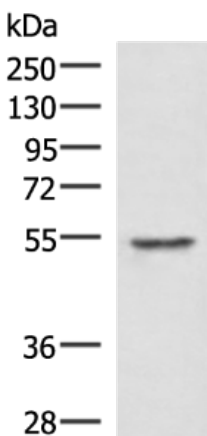
In comparison with the IHC on the left, the same paraffin-embedded Human cervical cancer tissue is first treated with the fusion protein and then with 219104(Anti-TUBD1 Antibody) at dilution 1/70.



The image on the left is immunohistochemistry of paraffin-embedded Human gastric cancer tissue using 219104(Anti-TUBD1 Antibody) at a dilution of 1/70.



In comparison with the IHC on the left, the same paraffin-embedded Human gastric cancer tissue is first treated with fusion protein and then with D225847(Anti-TUBD1 Antibody) at dilution 1/70.



Gel: 8%SDS-PAGE, Lysate: 40 µg;  
Lane: Jurkat cell lysate;  
Primary antibody: 219104(TUBD1 Antibody) at dilution 1/1000;  
Secondary antibody: HRP-conjugated Goat anti rabbit IgG at 1/5000 dilution;  
Exposure time: 5 seconds



# Product Description

Pioneering GTPase and Oncogene Product Development since 2010

---