

TUBB2A RABBIT PAB

Cat.#: S219125

Product Name: Anti-TUBB2A Rabbit Polyclonal Antibody

Synonyms: TUBB; TUBB2; CDCBM5

UNIPROT ID: Q13885 (Gene Accession - BC001194)

Background: Microtubules, key participants in processes such as mitosis and intracellular transport, are composed of heterodimers of alpha- and beta-tubulins. The protein encoded by this gene is a beta-tubulin. Defects in this gene are associated with complex cortical dysplasia with other brain malformations-5. Two transcript variants encoding distinct isoforms have been found for this gene.

Immunogen: Fusion protein of human TUBB2A

Applications: ELISA, WB, IHC

Recommended Dilutions: IHC: 50-300;WB: 500-2000;ELISA: 5000-10000

Host Species: Rabbit

Clonality: Rabbit Polyclonal

Isotype: Immunogen-specific rabbit IgG

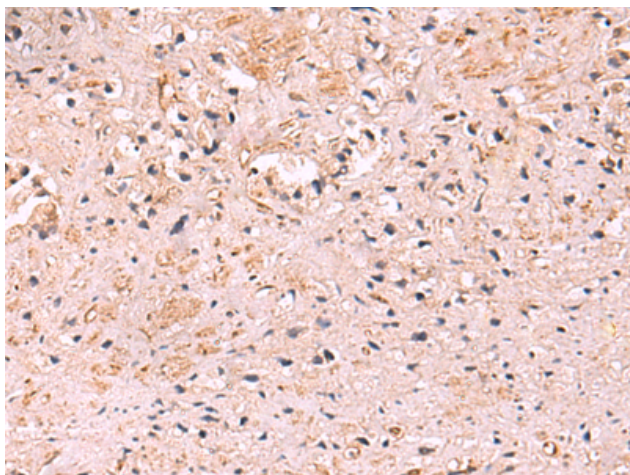
Purification: Antigen affinity purification

Species Reactivity: Human, Mouse, Rat

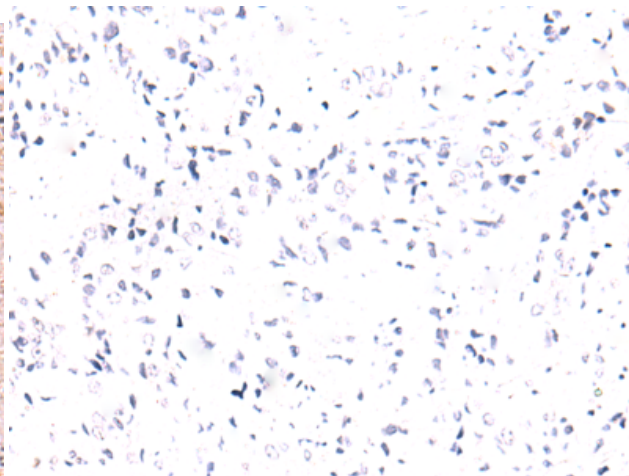
Constituents: PBS (without Mg²⁺ and Ca²⁺), pH 7.4, 150 mM NaCl, 0.05% Sodium Azide and 40% glycerol

Research Areas: Signal Transduction

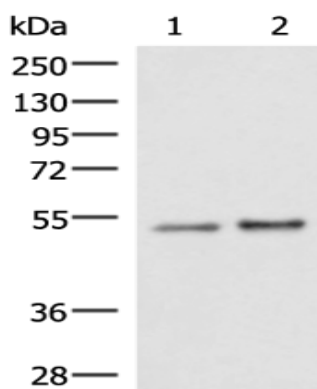
Storage & Shipping: Store at -20°C. Avoid repeated freezing and thawing



Immunohistochemistry analysis of paraffin embedded Human prostate cancer tissue using 219125 (TUBB2A Antibody) at a dilution of 1/85 (Cytoplasm).



In comparison with the IHC on the left, the same paraffin-embedded Human prostate cancer tissue is first treated with the fusion protein and then with 219125 (Anti-TUBB2A Antibody) at dilution 1/85.



Gel: 8% SDS-PAGE, Lysate: 40 μ g;

Lane 1-2: Mouse brain tissue and Rat brain tissue lysates;

Primary antibody: 219125 (TUBB2A Antibody) at dilution 1/550;

Secondary antibody: HRP-conjugated Goat anti rabbit IgG at 1/5000 dilution;

Exposure time: 3 seconds