

TUBA1B RABBIT PAB

Cat.#: S218717

Product Name: Anti-TUBA1B Rabbit Polyclonal Antibody

Synonyms: K-ALPHA-1

UNIPROT ID: P68363 (Gene Accession - BC017004)

Background: Enables double-stranded RNA binding activity and ubiquitin protein ligase binding activity. Predicted to be involved in microtubule cytoskeleton organization and mitotic cell cycle. Predicted to act upstream of or within cellular response to interleukin-4. Located in microtubule.

Immunogen: Fusion protein of human TUBA1B

Applications: ELISA, WB, IHC

Recommended Dilutions: IHC: 50-200;WB: 1000-5000;ELISA: 5000-10000

Host Species: Rabbit

Clonality: Rabbit Polyclonal

Isotype: Immunogen-specific rabbit IgG

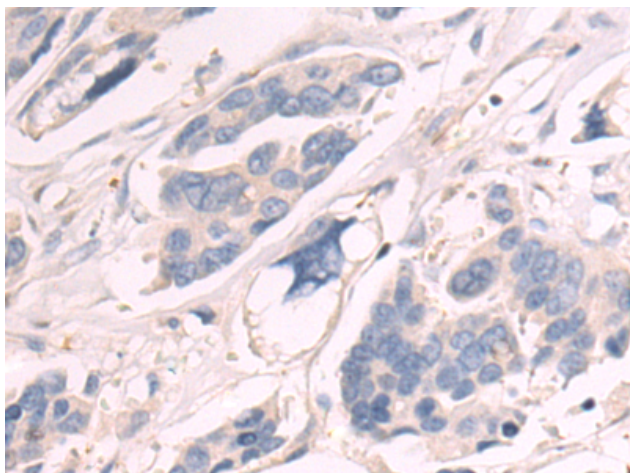
Purification: Antigen affinity purification

Species Reactivity: Human, Mouse, Rat

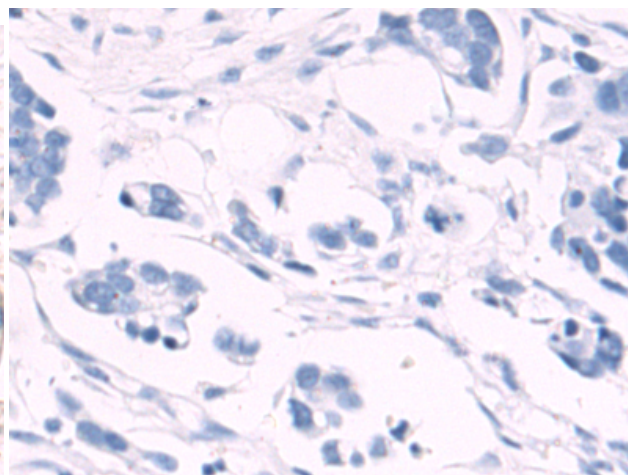
Constituents: PBS (without Mg²⁺ and Ca²⁺), pH 7.4, 150 mM NaCl, 0.05% Sodium Azide and 40% glycerol

Research Areas: Signal Transduction

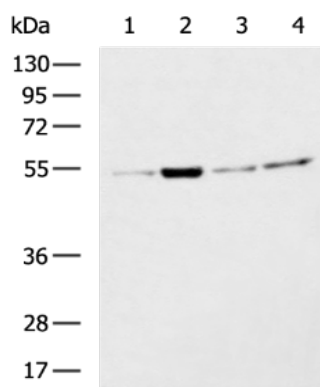
Storage & Shipping: Store at -20°C. Avoid repeated freezing and thawing



Immunohistochemistry analysis of paraffin embedded Human colorectal cancer tissue using 218717 (TUBA1B Antibody) at a dilution of 1/80 (Cytoplasm).



In comparison with the IHC on the left, the same paraffin-embedded Human colorectal cancer tissue is first treated with the fusion protein and then with 218717 (Anti-TUBA1B Antibody) at dilution 1/80.



Gel: 8% SDS-PAGE, Lysate: 40 μ g;
 Lane 1-4: NIH/3T3 cell, 293T cell, PC-3 cell, Caco2 cell lysates;
 Primary antibody: 218717 (TUBA1B Antibody) at dilution 1/1300;
 Secondary antibody: HRP-conjugated Goat anti rabbit IgG at 1/5000 dilution;
 Exposure time: 30 seconds