

TTBK1 RABBIT PAB

Cat.#: S221062

Product Name: Anti-TTBK1 Rabbit Polyclonal Antibody

Synonyms: BDTK

UNIPROT ID: Q5TCY1 (Gene Accession - NP_115927)

Background: TTBK1 (tau tubulin kinase 1), also known as BDTK (brain-derived tau kinase), is a 1,321 amino acid protein that contains one protein kinase domain and belongs to the serine/threonine protein kinase family. Localized to the cytoplasm and expressed at high levels in brain and at lower levels in testis and spinal cord, TTBK1 functions as a serine/threonine kinase that can phosphorylate Tau (a protein involved in tubulin polymerization) on threonine, tyrosine and serine residues. Specifically, TTBK1 uses divalent cations, such as magnesium and manganese, to catalyze the ATP-dependent transfer of a phosphate group onto Tau, creating a phosphoprotein and ADP. Phosphorylation of Tau causes its aggregation and subsequent loss of function, suggesting an important role for TTBK1 in the control of tubulin dynamics.

Immunogen: Synthetic peptide of human TTBK1

Applications: ELISA, IHC

Recommended Dilutions: IHC: 25-100; ELISA: 2000-5000

Host Species: Rabbit

Clonality: Rabbit Polyclonal

Isotype: Immunogen-specific rabbit IgG

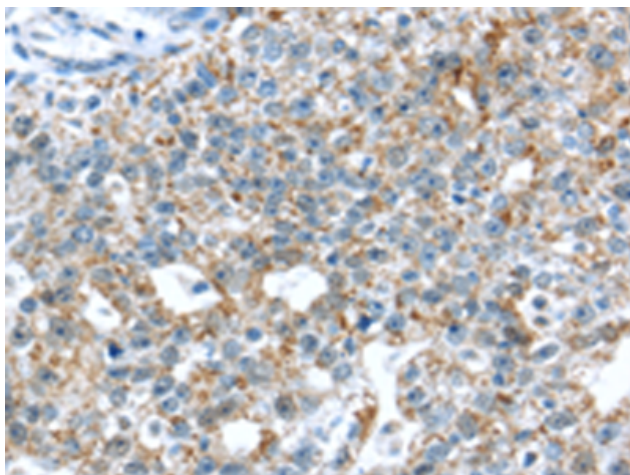
Purification: Antigen affinity purification

Species Reactivity: Human

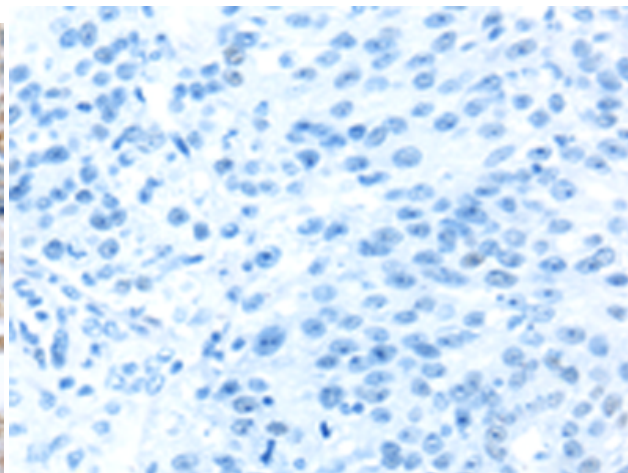
Constituents: PBS (without Mg²⁺ and Ca²⁺), pH 7.4, 150 mM NaCl, 0.05% Sodium Azide and 40% glycerol

Research Areas: Signal Transduction, Neuroscience

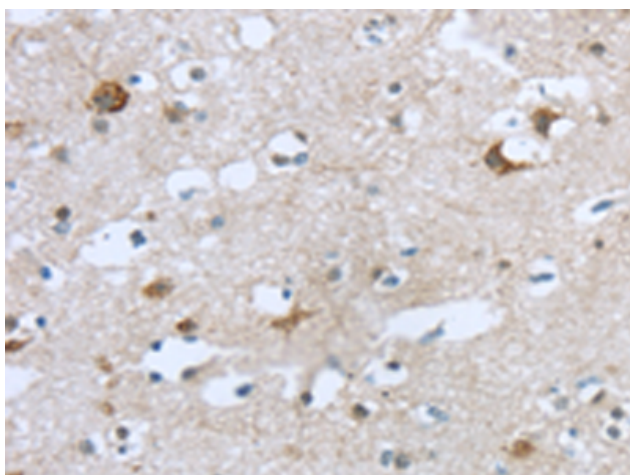
Storage & Shipping: Store at -20°C. Avoid repeated freezing and thawing



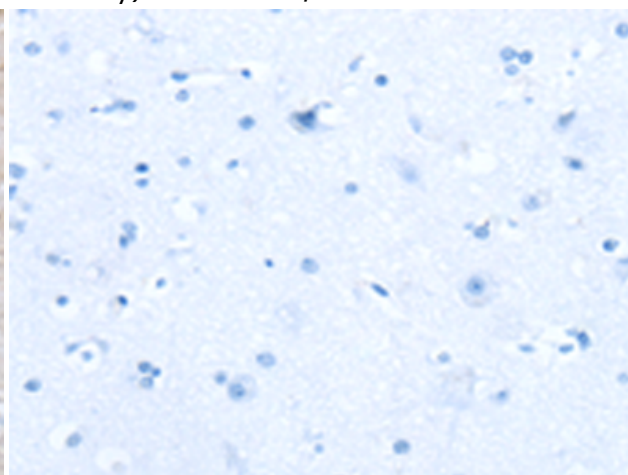
Immunohistochemistry analysis of paraffin-embedded Human breast cancer tissue using 221062(TTBK1 Antibody) at a dilution of 1/35(Cytoplasm).



In comparison with the IHC on the left, the same paraffin-embedded Human breast cancer tissue is first treated with the synthetic peptide and then with 221062(Anti-TTBK1 Antibody) at dilution 1/35.



The image on the left is immunohistochemistry of paraffin-embedded Human brain tissue using 221062(Anti-TTBK1 Antibody) at a dilution of 1/35.



In comparison with the IHC on the left, the same paraffin-embedded Human brain tissue is first treated with synthetic peptide and then with D262429(Anti-TTBK1 Antibody) at dilution 1/35.