

TSPY1/TSPY3 RABBIT PAB

Cat.#: S221061

Product Name: Anti-TSPY1/TSPY3 Rabbit Polyclonal Antibody

Synonyms: CT78; TSPY; DYS14; pJA923/CT78

UNIPROT ID: Q01534/P0CV98 (Gene Accession - NP_003299/NP_001071165)

Background: The protein encoded by this gene is found only in testicular tissue and may be involved in spermatogenesis. Approximately 35 copies of this gene are present in humans, but only a single, nonfunctional orthologous gene is found in mouse. Two transcript variants encoding different isoforms have been found for this gene.

Immunogen: Synthetic peptide of human TSPY1/TSPY3

Applications: ELISA, IHC

Recommended Dilutions: IHC: 30-150; ELISA: 2000-10000

Host Species: Rabbit

Clonality: Rabbit Polyclonal

Isotype: Immunogen-specific rabbit IgG

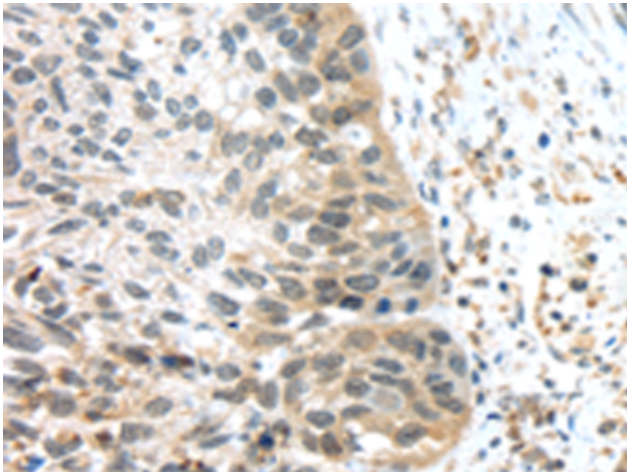
Purification: Antigen affinity purification

Species Reactivity: Human

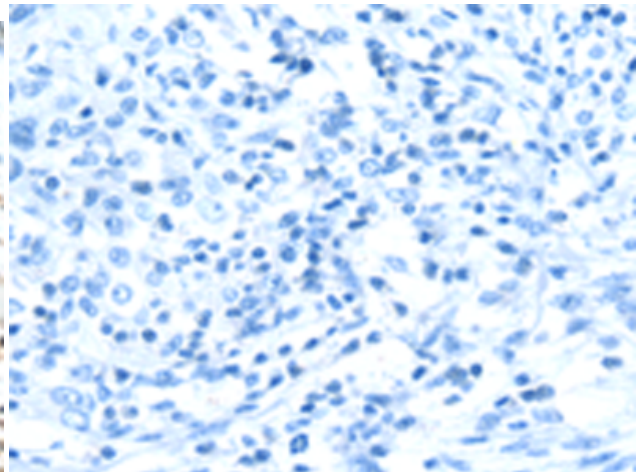
Constituents: PBS (without Mg²⁺ and Ca²⁺), pH 7.4, 150 mM NaCl, 0.05% Sodium Azide and 40% glycerol

Research Areas: Epigenetics and Nuclear Signaling, Stem Cells, Developmental Biology

Storage & Shipping: Store at -20°C. Avoid repeated freezing and thawing



Immunohistochemistry analysis of paraffin embedded Human esophagus cancer tissue using 221061(TSPY1/TSPY3 Antibody) at a dilution of 1/45(Nucleus).



In comparison with the IHC on the left, the same paraffin-embedded Human esophagus cancer tissue is first treated with the synthetic peptide and then with 221061(Anti-TSPY1/TSPY3 Antibody) at dilution 1/45.