

## TSPAN8 RABBIT PAB

**Cat.#:** S218705

**Product Name:** Anti-TSPAN8 Rabbit Polyclonal Antibody

**Synonyms:** CO-029; TM4SF3

**UNIPROT ID:** P19075 (Gene Accession - BC005246 )

**Background:** The protein encoded by this gene is a member of the transmembrane 4 superfamily, also known as the tetraspanin family. Most of these members are cell-surface proteins that are characterized by the presence of four hydrophobic domains. The proteins mediate signal transduction events that play a role in the regulation of cell development, activation, growth and motility. This encoded protein is a cell surface glycoprotein that is known to complex with integrins. This gene is expressed in different carcinomas. The use of alternate polyadenylation sites has been found for this gene.

**Immunogen:** Fusion protein of human TSPAN8

**Applications:** ELISA, WB, IHC

**Recommended Dilutions:** IHC: 100-300;WB: 1000-5000;ELISA: 5000-10000

**Host Species:** Rabbit

**Clonality:** Rabbit Polyclonal

**Isotype:** Immunogen-specific rabbit IgG

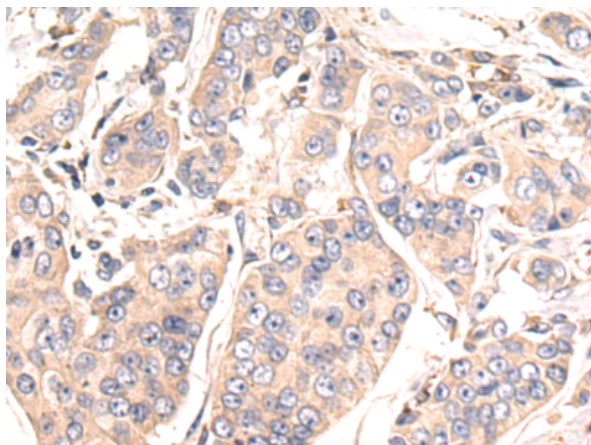
**Purification:** Antigen affinity purification

**Species Reactivity:** Human

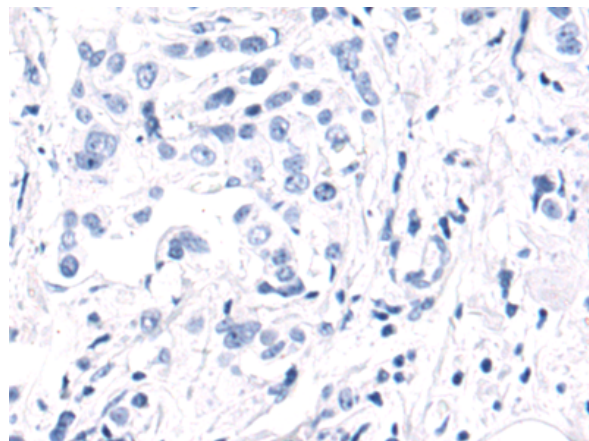
**Constituents:** PBS (without Mg<sup>2+</sup> and Ca<sup>2+</sup>), pH 7.4, 150 mM NaCl, 0.05% Sodium Azide and 40% glycerol

**Research Areas:** Signal Transduction

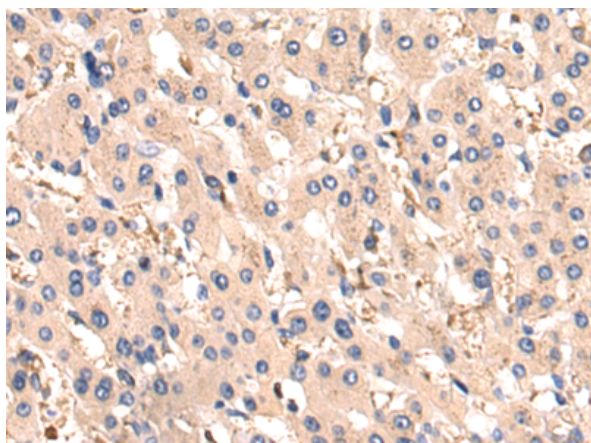
**Storage & Shipping:** Store at -20°C. Avoid repeated freezing and thawing



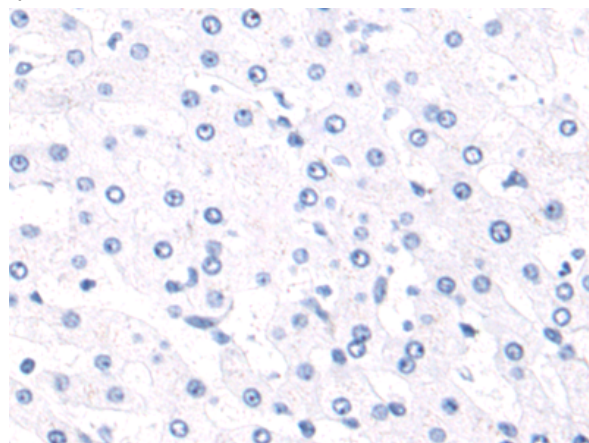
Immunohistochemistry analysis of paraffin embedded Human breast cancer tissue using 218705(TSPAN8 Antibody) at a dilution of 1/120(Cytoplasm).



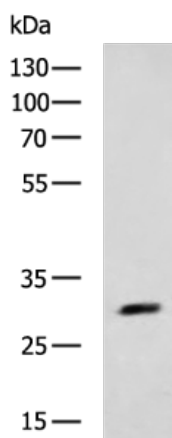
In comparison with the IHC on the left, the same paraffin-embedded Human breast cancer tissue is first treated with the fusion protein and then with 218705(Anti-TSPAN8 Antibody) at dilution 1/120.



The image on the left is immunohistochemistry of paraffin-embedded Human liver cancer tissue using 218705(Anti-TSPAN8 Antibody) at a dilution of 1/120.



In comparison with the IHC on the left, the same paraffin-embedded Human liver cancer tissue is first treated with fusion protein and then with D225024(Anti-TSPAN8 Antibody) at dilution 1/120.



Gel: 8%SDS-PAGE, Lysate:40 µg;  
Lane: LOVO cell lysate;  
Primary antibody: 218705(TSPAN8 Antibody) at dilution 1/1800;  
Secondary antibody: HRP-conjugated Goat anti rabbit IgG at 1/5000 dilution;  
Exposure time: 3 seconds



# Product Description

Pioneering GTPase and Oncogene Product Development since 2010

---