

TSC22D3 RABBIT PAB

Cat.#: S217478

Product Name: Anti-TSC22D3 Rabbit Polyclonal Antibody

Synonyms: DIP; GILZ; DSIPI; TSC-22R

UNIPROT ID: Q99576 (Gene Accession - BC018148)

Background: This gene encodes the anti-inflammatory protein glucocorticoid (GC)-induced leucine zipper. Expression of this gene stimulated by glucocorticoids and interleukin 10 and it appears to play a key role in the anti-inflammatory and immunosuppressive effects of this steroid. This protein has also been shown to inhibit pro-inflammatory molecules including nuclear factor κ B. Alternate splicing results in multiple transcript variants.

Immunogen: Fusion protein of human TSC22D3

Applications: ELISA, WB, IHC

Recommended Dilutions: IHC: 50-200;WB: 1000-5000;ELISA: 5000-10000

Host Species: Rabbit

Clonality: Rabbit Polyclonal

Isotype: Immunogen-specific rabbit IgG

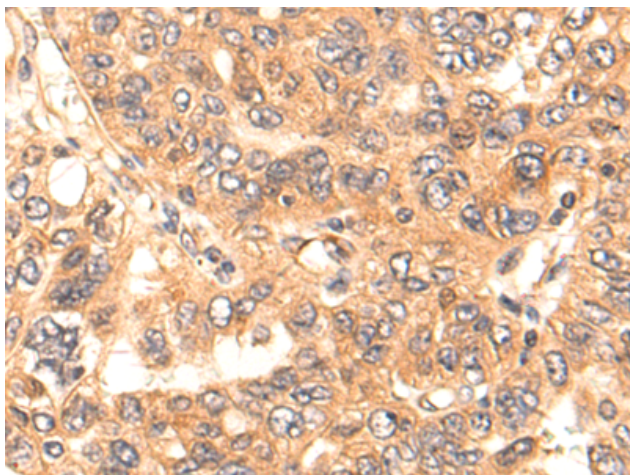
Purification: Antigen affinity purification

Species Reactivity: Human, Mouse, Rat

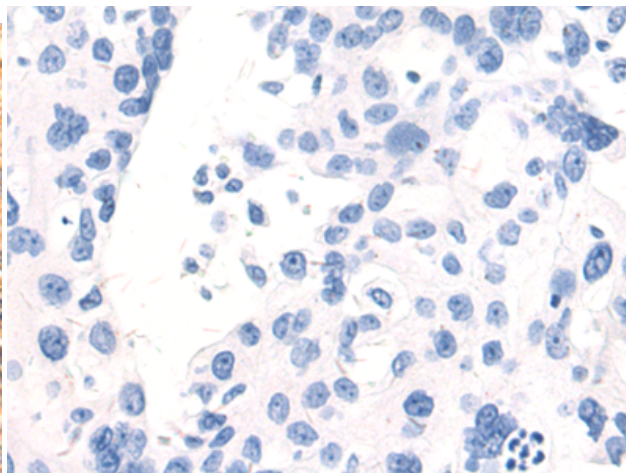
Constituents: PBS (without Mg^{2+} and Ca^{2+}), pH 7.4, 150 mM NaCl, 0.05% Sodium Azide and 40% glycerol

Research Areas: Signal Transduction, Cancer

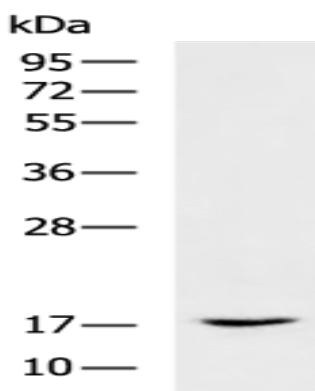
Storage & Shipping: Store at $-20^{\circ}C$. Avoid repeated freezing and thawing



Immunohistochemistry analysis of paraffin embedded Human breast cancer tissue using 217478(TSC22D3 Antibody) at a dilution of 1/70(Cytoplasm).



In comparison with the IHC on the left, the same paraffin-embedded Human breast cancer tissue is first treated with the fusion protein and then with 217478(Anti-TSC22D3 Antibody) at dilution 1/70.



Gel: 12%SDS-PAGE, Lysate: 40 μ g;
Lane: 293T cell lysate;
Primary antibody: 217478(TSC22D3 Antibody)
at dilution 1/1350;
Secondary antibody: HRP-conjugated Goat
anti rabbit IgG at 1/5000 dilution;
Exposure time: 7 seconds