

## TSC2 RABBIT PAB

**Cat.#:** S221065

**Product Name:** Anti-TSC2 Rabbit Polyclonal Antibody

**Synonyms:** LAM; TSC4; PPP1R160

**UNIPROT ID:** P49815 (Gene Accession - NP\_000539 )

**Background:** Mutations in this gene lead to tuberous sclerosis complex. Its gene product is believed to be a tumor suppressor and is able to stimulate specific GTPases. The protein associates with hamartin in a cytosolic complex, possibly acting as a chaperone for hamartin. Alternative splicing results in multiple transcript variants encoding different isoforms.

**Immunogen:** Synthetic peptide of human TSC2

**Applications:** ELISA, WB, IHC

**Recommended Dilutions:** IHC: Oct-50;WB: 200-1000;ELISA: 1000-2000

**Host Species:** Rabbit

**Clonality:** Rabbit Polyclonal

**Isotype:** Immunogen-specific rabbit IgG

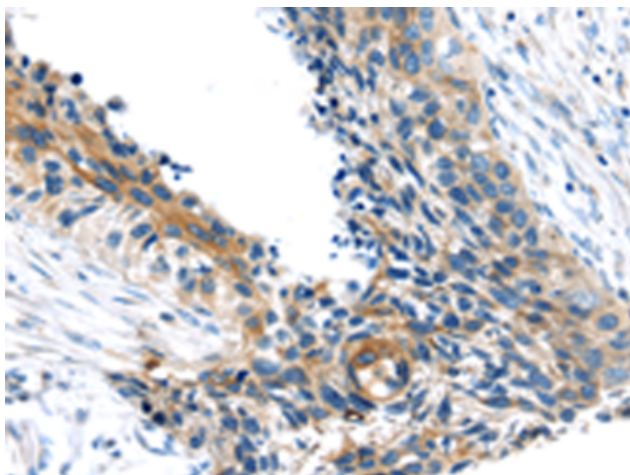
**Purification:** Antigen affinity purification

**Species Reactivity:** Human, Mouse, Rat

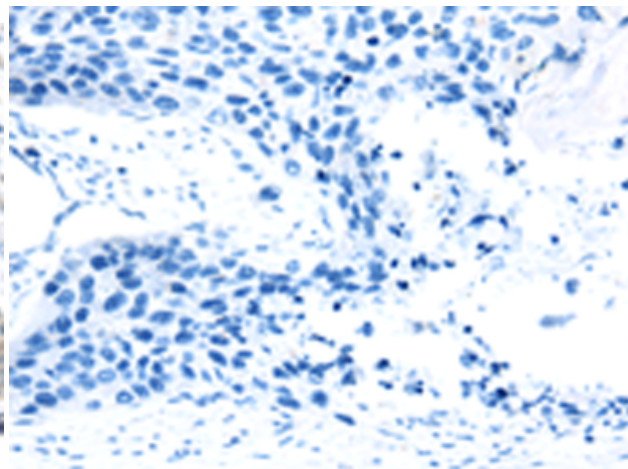
**Constituents:** PBS (without Mg<sup>2+</sup> and Ca<sup>2+</sup>), pH 7.4, 150 mM NaCl, 0.05% Sodium Azide and 40% glycerol

**Research Areas:** Signal Transduction, Epigenetics and Nuclear Signaling, Metabolism, Cancer

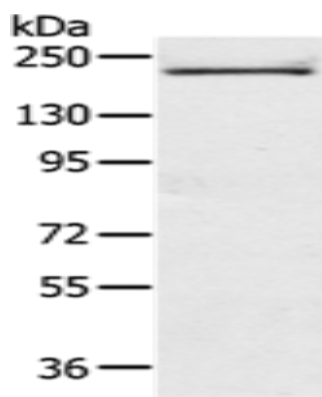
**Storage & Shipping:** Store at -20°C. Avoid repeated freezing and thawing



Immunohistochemistry analysis of paraffin embedded Human esophagus cancer tissue using 221065(TSC2 Antibody) at a dilution of 1/20(Cytoplasm).



In comparison with the IHC on the left, the same paraffin-embedded Human esophagus cancer tissue is first treated with the synthetic peptide and then with 221065(Anti-TSC2 Antibody) at dilution 1/20.



Gel: 6%SDS-PAGE, Lysate: 40  $\mu$ g;  
Lane: A172 cells;  
Primary antibody: 221065(TSC2 Antibody) at dilution 1/200;  
Secondary antibody: Goat anti rabbit IgG at 1/8000 dilution;  
Exposure time: 5 minutes