

## TRPM8 RABBIT PAB

**Cat.#:** S217602

**Product Name:** Anti-TRPM8 Rabbit Polyclonal Antibody

**Synonyms:** TRPP8; LTRPC6

**UNIPROT ID:** Q7Z2W7 (Gene Accession - BC001135 )

**Background:** Transient receptor potential ion channels (TRPC) are a superfamily of six transmembrane segment-spanning gated cation channels. TRP subtypes mediate store-operated Ca<sup>2+</sup> entry, a process involving Ca<sup>2+</sup> influx and replenishment of Ca<sup>2+</sup> stores formerly emptied through the action of inositol 1,4,5-trisphosphate production and other Ca<sup>2+</sup> mobilizing agents.

**Immunogen:** Fusion protein of human TRPM8

**Applications:** ELISA, IHC

**Recommended Dilutions:** IHC: 25-100; ELISA: 1000-2000

**Host Species:** Rabbit

**Clonality:** Rabbit Polyclonal

**Isotype:** Immunogen-specific rabbit IgG

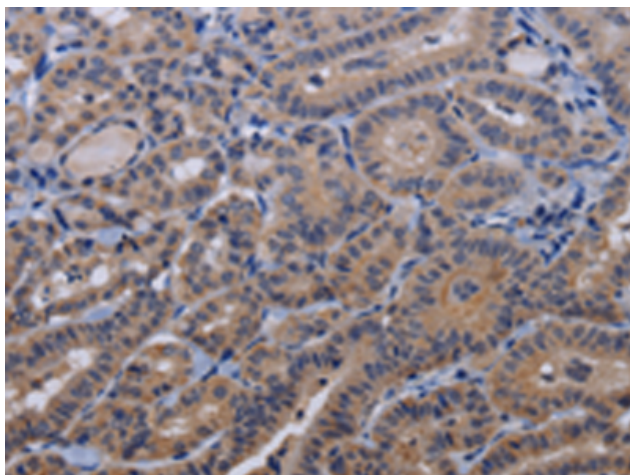
**Purification:** Antigen affinity purification

**Species Reactivity:** Human, Mouse, Rat

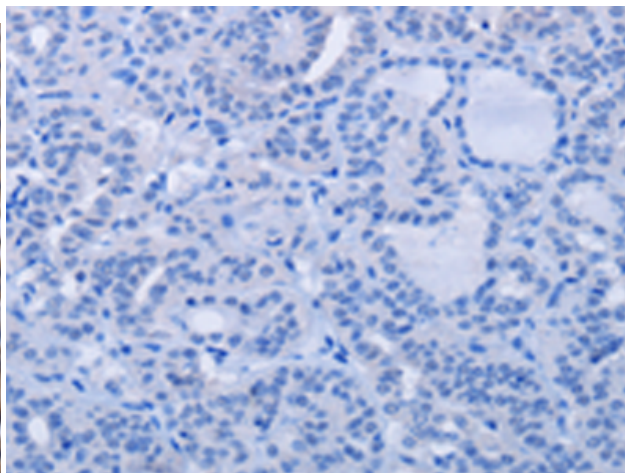
**Constituents:** PBS (without Mg<sup>2+</sup> and Ca<sup>2+</sup>), pH 7.4, 150 mM NaCl, 0.05% Sodium Azide and 40% glycerol

**Research Areas:** Metabolism, Neuroscience

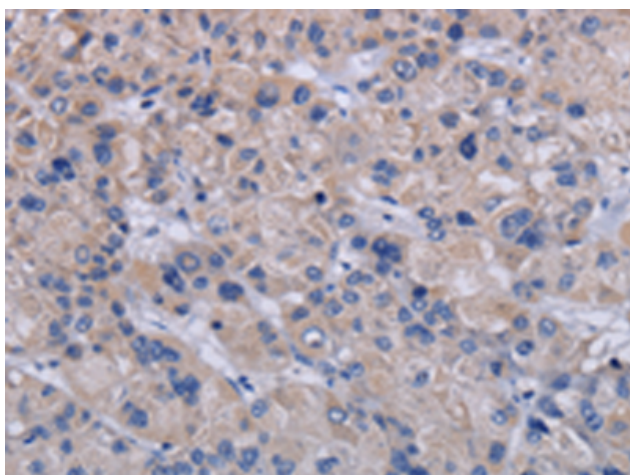
**Storage & Shipping:** Store at -20°C. Avoid repeated freezing and thawing



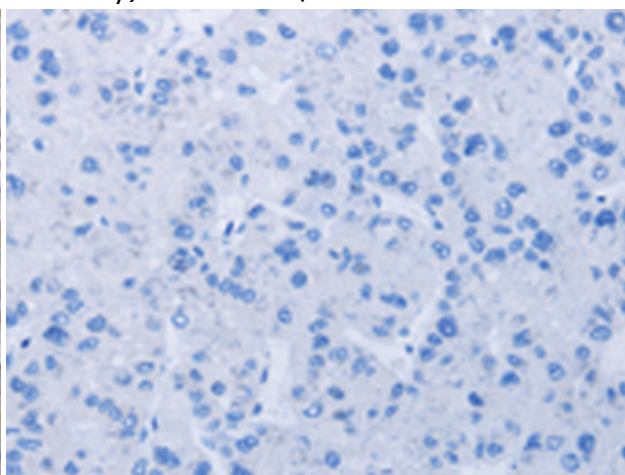
Immunohistochemistry analysis of paraffin embedded Human thyroid cancer tissue using 217602 (TRPM8 Antibody) at a dilution of 1/30 (Cytoplasm).



In comparison with the IHC on the left, the same paraffin-embedded Human thyroid cancer tissue is first treated with the fusion protein and then with 217602 (Anti-TRPM8 Antibody) at dilution 1/30.



The image on the left is immunohistochemistry of paraffin-embedded Human liver cancer tissue using 217602 (Anti-TRPM8 Antibody) at a dilution of 1/30.



In comparison with the IHC on the left, the same paraffin-embedded Human liver cancer tissue is first treated with fusion protein and then with D222681 (Anti-TRPM8 Antibody) at dilution 1/30.