

TRIMETHYL-HISTONE H4 (LYS20) RABBIT PAB

Cat.#: N225636

Product Name: Anti-TriMethyl-Histone H4 (Lys20) Rabbit pAb

Synonyms: H4K20me3; H4F2; HIST; HIST1H4A; Histone H4

UNIPROT ID: P62805

Background: The chromatin fiber is further compacted through the interaction of a linker histone, H1, with the DNA between the nucleosomes to form higher order chromatin structures. This gene is intronless and encodes a member of the histone H4 family.

Immunogen: A synthesized peptide derived from human Histone H4 (tri methyl K20)

Applications: WB,IHC-P

Recommended Dilutions: WB: 1/500-1/1000 IHC: 1/50-1/100

Host Species: Rabbit

Clonality: Rabbit Polyclonal

Clone ID: -

MW: Calculated MW: 11 kDa; Observed MW: 11 kDa

Isotype: IgG

Purification: Affinity Chromatography

Species Reactivity: Human,Mouse,Rat

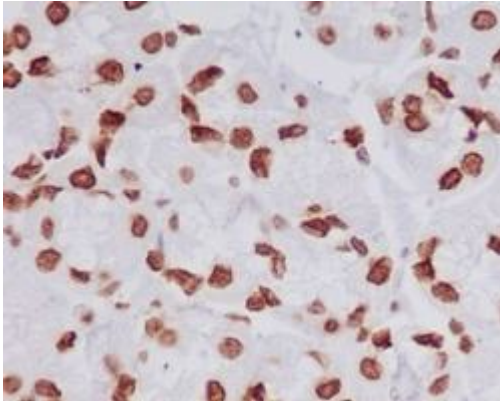
Conjugation: Unconjugated

Modification: Methylated

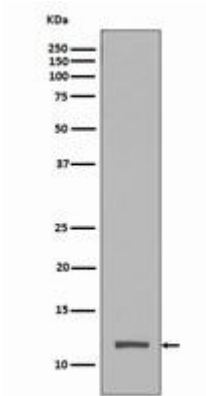
Constituents: PBS (without Mg²⁺ and Ca²⁺), pH 7.3 containing 50% glycerol, 0.5% BSA and 0.02% sodium azide

Research Areas: Epigenetics and Nuclear Signaling

Storage & Shipping: Store at -20°C. Avoid repeated freezing and thawing



Immunohistochemistry analysis of paraffin-embedded Human stomach using Histone H4 (tri methyl K20) antibody. High-pressure and temperature Sodium Citrate pH 6.0 was used for antigen retrieval.



Western blot analysis of Histone H4 (tri methyl K20) in HeLa lysates using TriMethyl-Histone H4 (Lys20) antibody.