

TRIM62 RABBIT PAB

Cat.#: S221024

Product Name: Anti-TRIM62 Rabbit Polyclonal Antibody

Synonyms: DEARI

UNIPROT ID: Q9BVG3 (Gene Accession - NP_060677)

Background: TRIM62 (tripartite motif-containing 62) is a 475 amino acid protein that belongs to the TRIM/RBCC (Ring finger, B box coiled-coil) family. TRIM62 contains one B box-type zinc finger, one SPRY domain and one RING-type zinc finger; a motif that has zinc-chelating activity and is involved in mediating protein-protein and protein-DNA interactions. As a member of the TRIM/RBCC family, TRIM62 may function in transcriptional regulation, cell transformation and carcinogenesis. In addition, TRIM62 expression can affect the entry of murine leukemia virus (MLV) and human immunodeficiency virus 1 (HIV).

Immunogen: Synthetic peptide of human TRIM62

Applications: ELISA, WB, IHC

Recommended Dilutions: IHC: 25-100;WB: 500-2000;ELISA: 2000-5000

Host Species: Rabbit

Clonality: Rabbit Polyclonal

Isotype: Immunogen-specific rabbit IgG

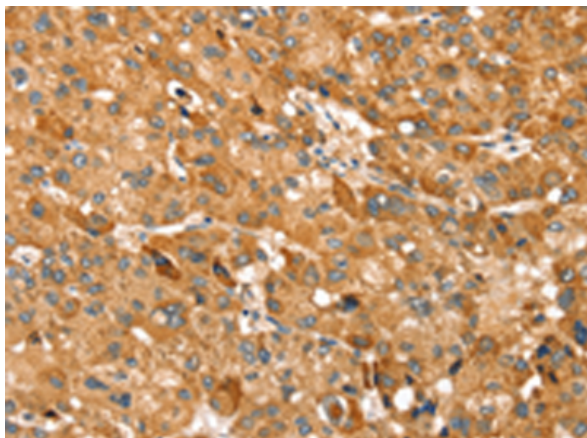
Purification: Antigen affinity purification

Species Reactivity: Human

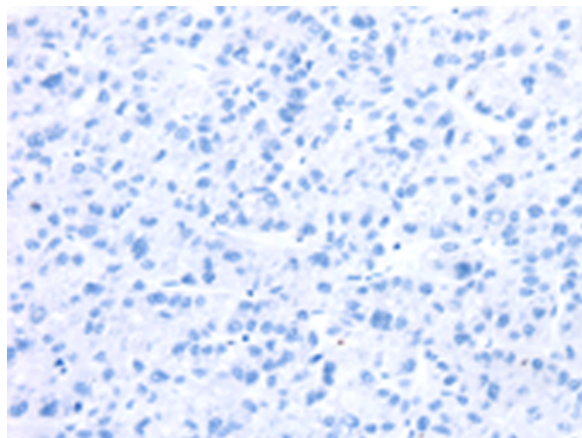
Constituents: PBS (without Mg²⁺ and Ca²⁺), pH 7.4, 150 mM NaCl, 0.05% Sodium Azide and 40% glycerol

Research Areas: Cell Biology

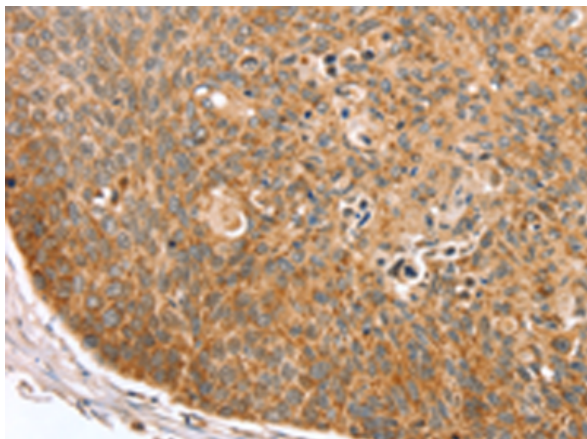
Storage & Shipping: Store at -20°C. Avoid repeated freezing and thawing



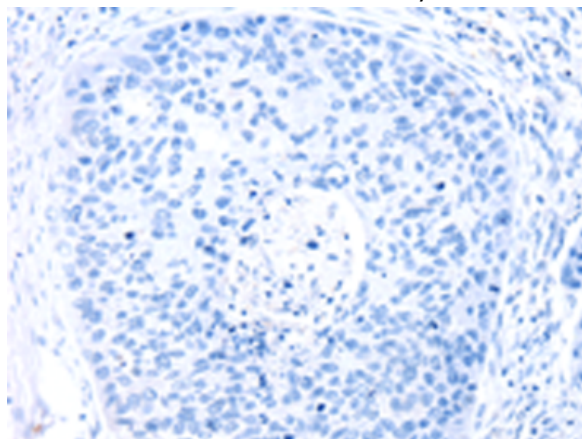
Immunohistochemistry analysis of paraffin embedded Human liver cancer tissue using 221024(TRIM62 Antibody) at a dilution of 1/30(Cytoplasm).



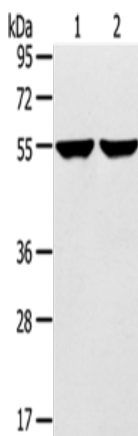
In comparison with the IHC on the left, the same paraffin-embedded Human liver cancer tissue is first treated with the synthetic peptide and then with 221024(Anti-TRIM62 Antibody) at dilution 1/30.



The image on the left is immunohistochemistry of paraffin-embedded Human esophagus cancer tissue using 221024(Anti-TRIM62 Antibody) at a dilution of 1/30.



In comparison with the IHC on the left, the same paraffin-embedded Human esophagus cancer tissue is first treated with synthetic peptide and then with D262370(Anti-TRIM62 Antibody) at dilution 1/30.



Gel: 8%SDS-PAGE, Lysate: 40 µg;
Lane 1-2: 231 cells, hepg2 cells;
Primary antibody: 221024(TRIM62 Antibody) at dilution 1/400;
Secondary antibody: Goat anti rabbit IgG at 1/8000 dilution;
Exposure time: 1 minute



Product Description

Pioneering GTPase and Oncogene Product Development since 2010
