

TRIM32 RABBIT PAB

Cat.#: S216859

Product Name: Anti-TRIM32 Rabbit Polyclonal Antibody

Synonyms: HT2A; BBS11; TATIP; LGMD2H

UNIPROT ID: Q13049 (Gene Accession - BC003154)

Background: The protein encoded by this gene is a member of the tripartite motif (TRIM) family. The TRIM motif includes three zinc-binding domains, a RING, a B-box type 1 and a B-box type 2, and a coiled-coil region. The protein localizes to cytoplasmic bodies. The protein has also been localized to the nucleus, where it interacts with the activation domain of the HIV-1 Tat protein. The Tat protein activates transcription of HIV-1 genes.

Immunogen: Fusion protein of human TRIM32

Applications: ELISA, WB, IHC

Recommended Dilutions: IHC: 15-50;WB: 200-1000;ELISA: 1000-2000

Host Species: Rabbit

Clonality: Rabbit Polyclonal

Isotype: Immunogen-specific rabbit IgG

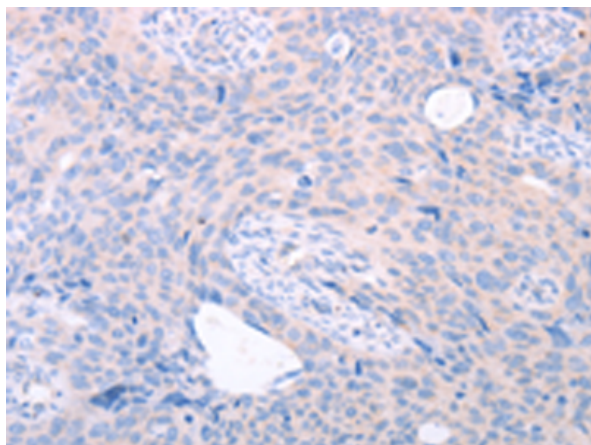
Purification: Antigen affinity purification

Species Reactivity: Human, Mouse

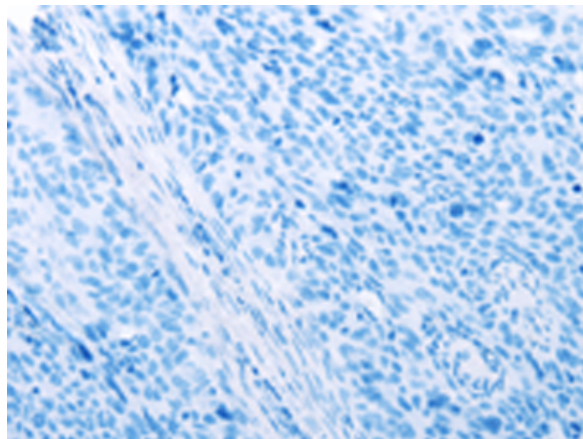
Constituents: PBS (without Mg²⁺ and Ca²⁺), pH 7.4, 150 mM NaCl, 0.05% Sodium Azide and 40% glycerol

Research Areas: Epigenetics and Nuclear Signaling, Cell Biology

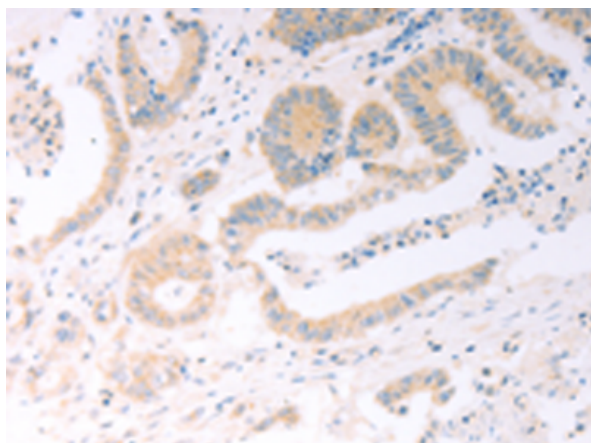
Storage & Shipping: Store at -20°C. Avoid repeated freezing and thawing



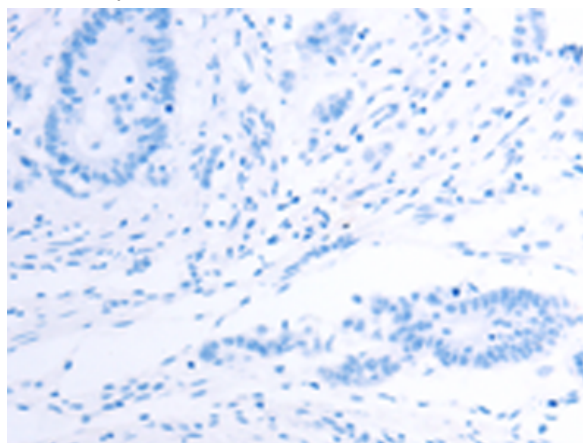
Immunohistochemistry analysis of paraffin embedded Human cervical cancer tissue using 216859(TRIM32 Antibody) at a dilution of 1/25(Cytoplasm).



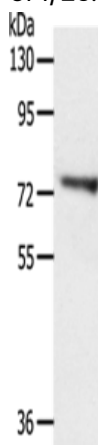
In comparison with the IHC on the left, the same paraffin-embedded Human cervical cancer tissue is first treated with the fusion protein and then with 216859(Anti-TRIM32 Antibody) at dilution 1/25.



The image on the left is immunohistochemistry of paraffin-embedded Human colon cancer tissue using 216859(Anti-TRIM32 Antibody) at a dilution of 1/25.



In comparison with the IHC on the left, the same paraffin-embedded Human colon cancer tissue is first treated with fusion protein and then with D221369(Anti-TRIM32 Antibody) at dilution 1/25.



Gel: 8%SDS-PAGE, Lysate: 40 µg;
Lane: Lovo cells;
Primary antibody: 216859(TRIM32 Antibody) at dilution 1/200;
Secondary antibody: Goat anti rabbit IgG at 1/8000 dilution;
Exposure time: 30 minutes



Product Description

Pioneering GTPase and Oncogene Product Development since 2010
