

TRIM24 RABBIT PAB

Cat.#: S221014

Product Name: Anti-TRIM24 Rabbit Polyclonal Antibody

Synonyms: PTC6; TFIA; TIF1; RNF82; TIF1A; hTIF1; TIF1ALPHA

UNIPROT ID: O15164 (Gene Accession - NP_056989)

Background: The protein encoded by this gene mediates transcriptional control by interaction with the activation function 2 (AF2) region of several nuclear receptors, including the estrogen, retinoic acid, and vitamin D3 receptors. The protein localizes to nuclear bodies and is thought to associate with chromatin and heterochromatin-associated factors. The protein is a member of the tripartite motif (TRIM) family. The TRIM motif includes three zinc-binding domains - a RING, a B-box type 1 and a B-box type 2 - and a coiled-coil region.

Immunogen: Synthetic peptide of human TRIM24

Applications: ELISA, WB, IHC

Recommended Dilutions: IHC: 30-150;WB: 500-2000;ELISA: 2000-5000

Host Species: Rabbit

Clonality: Rabbit Polyclonal

Isotype: Immunogen-specific rabbit IgG

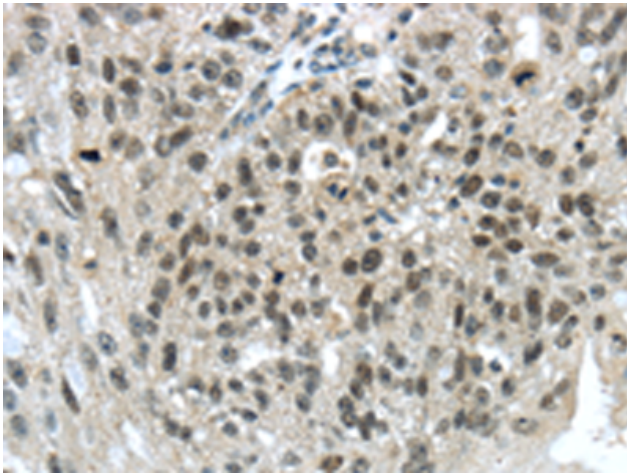
Purification: Antigen affinity purification

Species Reactivity: Human, Mouse

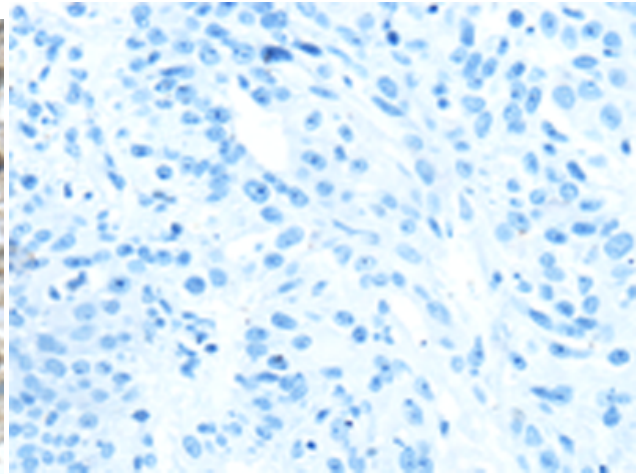
Constituents: PBS (without Mg²⁺ and Ca²⁺), pH 7.4, 150 mM NaCl, 0.05% Sodium Azide and 40% glycerol

Research Areas: Signal Transduction, Epigenetics and Nuclear Signaling

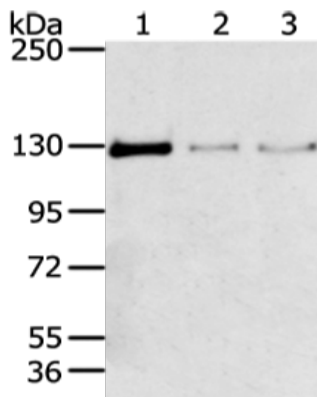
Storage & Shipping: Store at -20°C. Avoid repeated freezing and thawing



Immunohistochemistry analysis of paraffin embedded Human breast cancer tissue using 221014 (TRIM24 Antibody) at a dilution of 1/40 (Nucleus and Cytoplasm).



In comparison with the IHC on the left, the same paraffin-embedded Human breast cancer tissue is first treated with the synthetic peptide and then with 221014 (Anti-TRIM24 Antibody) at dilution 1/40.



Gel: 6% SDS-PAGE, Lysate: 80 μ g;
 Lane 1-3: 293T, 231 and lo2 cell;
 Primary antibody: 221014 (TRIM24 Antibody) at dilution 1/400;
 Secondary antibody: Goat anti rabbit IgG at 1/8000 dilution;
 Exposure time: 1 minute