

## TRIB3 RABBIT MAB

**Cat.#:** N263020

**Product Name:** Anti-TRIB3 Rabbit Monoclonal Antibody

**Synonyms:** C20orf97; NIPK; SINK; SKIP3; TRB3; Trib3; Tribbles homolog 3; Tribbles pseudokinase 3; Tribbles3

**UNIPROT ID:** Q96RU7

**Background:** Disrupts insulin signaling by binding directly to Akt kinases and blocking their activation. May bind directly to and mask the 'Thr-308' phosphorylation site in AKT1. Binds to ATF4 and inhibits its transcriptional activation activity. Interacts with the NF-kappa-B transactivator p65 RELA and inhibits its phosphorylation and thus its transcriptional activation activity.

**Immunogen:** A synthetic peptide of human TRIB3

**Applications:** WB,IP

**Recommended Dilutions:** WB: 1/500-1/1000 IP: 1/20

**Host Species:** Rabbit

**Clonality:** Rabbit Monoclonal

**Clone ID:** R01-9D1

**MW:** Calculated MW: 40 kDa; Observed MW: 40 kDa

**Isotype:** IgG

**Purification:** Affinity Purified

**Species Reactivity:** Human

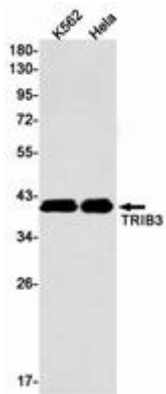
**Conjugation:** Unconjugated

**Modification:** Unmodified

**Constituents:** PBS (without Mg<sup>2+</sup> and Ca<sup>2+</sup>), pH 7.3 containing 50% glycerol, 0.5% BSA and 0.02% sodium azide

**Research Areas:** Signal Transduction

**Storage & Shipping:** Store at -20°C. Avoid repeated freezing and thawing



Western blot analysis of TRIB3 in K562, HeLa lysates using TRIB3 antibody.