

## TRIB1 RABBIT PAB

**Cat.#:** S221053

**Product Name:** Anti-TRIB1 Rabbit Polyclonal Antibody

**Synonyms:** C8FW; GIG2; TRB1; GIG-2; SKIPI; TRB-1

**UNIPROT ID:** Q96RU8 (Gene Accession - NP\_079471 )

**Background:** Interacts with MAPK kinases and regulates activation of MAP kinases. May not display kinase activity.

**Immunogen:** Synthetic peptide of human TRIB1

**Applications:** ELISA, IHC

**Recommended Dilutions:** IHC: Oct-50; ELISA: 1000-2000

**Host Species:** Rabbit

**Clonality:** Rabbit Polyclonal

**Isotype:** Immunogen-specific rabbit IgG

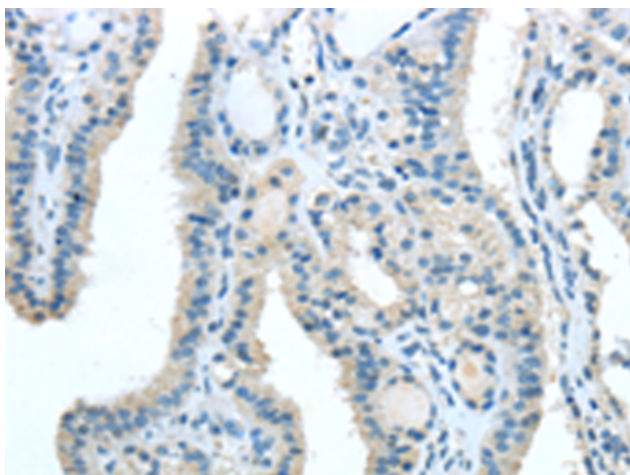
**Purification:** Antigen affinity purification

**Species Reactivity:** Human, Mouse

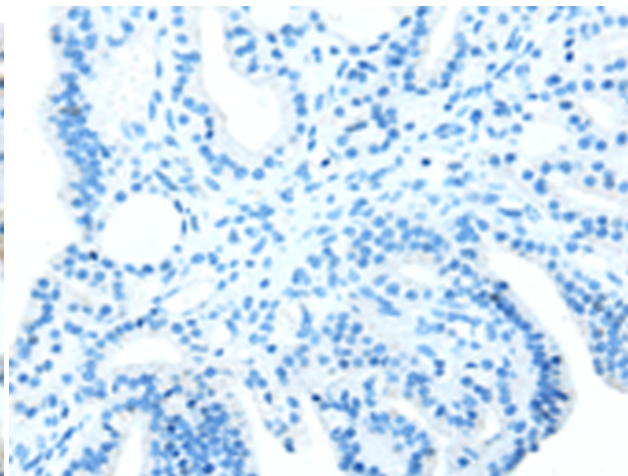
**Constituents:** PBS (without Mg<sup>2+</sup> and Ca<sup>2+</sup>), pH 7.4, 150 mM NaCl, 0.05% Sodium Azide and 40% glycerol

**Research Areas:** Signal Transduction, Cardiovascular, Stem Cells

**Storage & Shipping:** Store at -20°C. Avoid repeated freezing and thawing



Immunohistochemistry analysis of paraffin embedded Human thyroid cancer tissue using 221053 (TRIB1 Antibody) at a dilution of 1/20 (Cytoplasm).



In comparison with the IHC on the left, the same paraffin-embedded Human thyroid cancer tissue is first treated with the synthetic peptide and then with 221053 (Anti-TRIB1 Antibody) at dilution 1/20.