

## TREM2 RABBIT PAB

**Cat.#:** N226082

**Product Name:** Anti-TREM2 Rabbit pAb

**Synonyms:** TREM2; TREM-2; Trem2a; Trem2b; Trem2c; triggering receptor expressed on myeloid cells 2

**UNIPROT ID:** Q9NZC2

**Background:** This gene encodes a membrane protein that forms a receptor signaling complex with the TYRO protein tyrosine kinase binding protein. The encoded protein functions in immune response and may be involved in chronic inflammation by triggering the production of constitutive inflammatory cytokines. Defects in this gene are a cause of polycystic lipomembranous osteodysplasia with sclerosing leukoencephalopathy (PLOS1). Alternative splicing results in multiple transcript variants encoding different isoforms.

**Immunogen:** Recombinant fusion protein containing a sequence corresponding to amino acids 19-160 of human TREM2

(NP\_061838.1).HNTTVFQGVAGQSLQVSCPYDSMKHWGRRKAWCRQLGEGPCQRVVSTHNLWLLSFLRRWNGSTAITDSDLGGTLITLRNLQPHDAGLYQCQSLHGSEADTLRKVLVEVLADPLDRDAGDLWFPGESESFEDAHVHSIS

**Applications:** WB,IHC-P,IJC/IF

**Recommended Dilutions:** WB: 1/500-1/1000 IHC: 1/50-1/100 IF: 1/50-1/200

**Host Species:** Rabbit

**Clonality:** Rabbit Polyclonal

**Clone ID:** -

**MW:** Calculated MW: 25 kDa; Observed MW: 25&35-50 kDa

**Isotype:** IgG

**Purification:** Affinity Purified

**Species Reactivity:** Human,Mouse,Rat

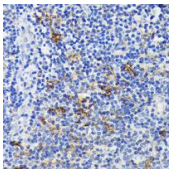
**Conjugation:** Unconjugated

**Modification:** Unmodified

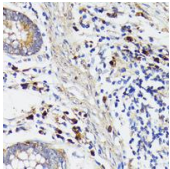
**Constituents:** PBS (without Mg<sup>2+</sup> and Ca<sup>2+</sup>), pH 7.3 containing 50% glycerol, 0.5% BSA and 0.02% sodium azide

**Research Areas:** Immunology

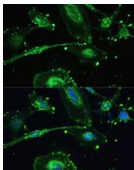
**Storage & Shipping:** Store at -20°C. Avoid repeated freezing and thawing



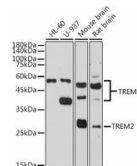
Immunohistochemistry analysis of paraffin-embedded Human tonsil using TREM2 antibody. High-pressure and temperature Sodium Citrate pH 6.0 was used for antigen retrieval.



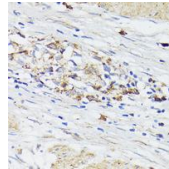
Immunohistochemistry analysis of paraffin-embedded Human colon carcinoma using TREM2 antibody. High-pressure and temperature Sodium Citrate pH 6.0 was used for antigen retrieval.



Immunofluorescence analysis of TREM2 in U251MG using TREM2 antibody, and DAPI (blue).



Western blot analysis of TREM2 in various cell lines lysates using TREM2 antibody.



Immunohistochemistry analysis of paraffin-embedded Human gastric cancer using TREM2 antibody. High-pressure and temperature Sodium Citrate pH 6.0 was used for antigen retrieval.