

TRAPPC4 RABBIT PAB

Cat.#: S218180

Product Name: Anti-TRAPPC4 Rabbit Polyclonal Antibody

Synonyms: SBDN; TRS23; PTD009; CGI-104; HSPC172; SYNBINDIN

UNIPROT ID: Q9Y296 (Gene Accession - BC010866)

Background: May play a role in vesicular transport from endoplasmic reticulum to Golgi.

Immunogen: Fusion protein of human TRAPPC4

Applications: ELISA, WB, IHC

Recommended Dilutions: IHC: 100-200;WB: 500-2000;ELISA: 5000-10000

Host Species: Rabbit

Clonality: Rabbit Polyclonal

Isotype: Immunogen-specific rabbit IgG

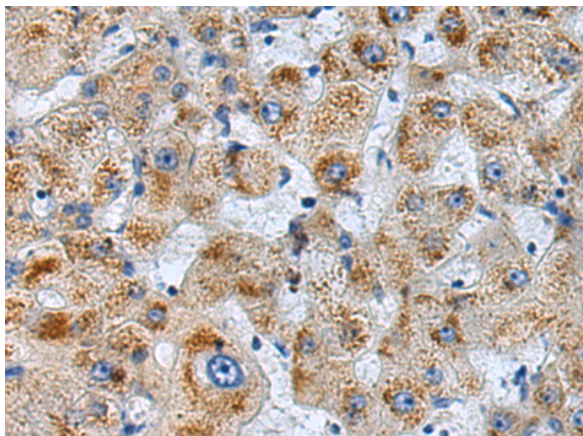
Purification: Antigen affinity purification

Species Reactivity: Human, Mouse, Rat

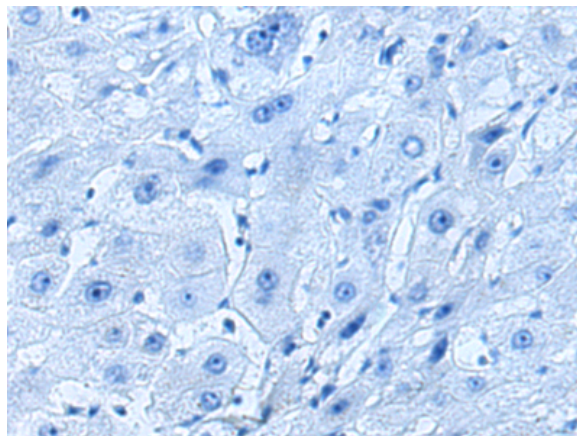
Constituents: PBS (without Mg²⁺ and Ca²⁺), pH 7.4, 150 mM NaCl, 0.05% Sodium Azide and 40% glycerol

Research Areas: Signal Transduction

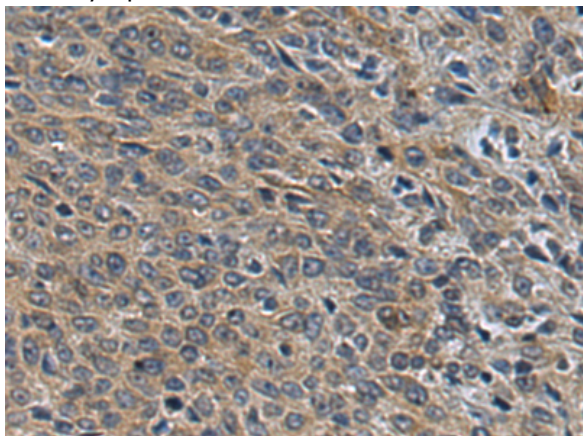
Storage & Shipping: Store at -20°C. Avoid repeated freezing and thawing



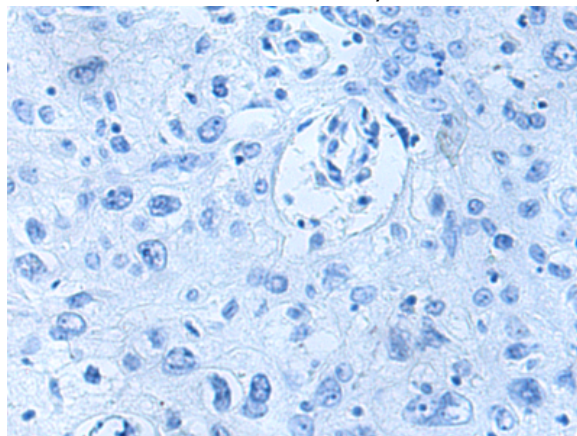
Immunohistochemistry analysis of paraffin embedded Human liver cancer tissue using 218180 (TRAPPC4 Antibody) at a dilution of 1/90 (Cytoplasm).



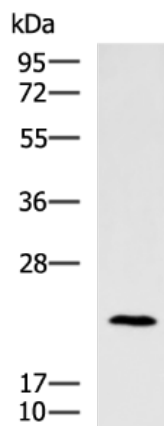
In comparison with the IHC on the left, the same paraffin-embedded Human liver cancer tissue is first treated with the fusion protein and then with 218180 (Anti-TRAPPC4 Antibody) at dilution 1/90.



The image on the left is immunohistochemistry of paraffin-embedded Human cervical cancer tissue using 218180 (Anti-TRAPPC4 Antibody) at a dilution of 1/90.



In comparison with the IHC on the left, the same paraffin-embedded Human cervical cancer tissue is first treated with fusion protein and then with D223893 (Anti-TRAPPC4 Antibody) at dilution 1/90.



Gel: 12% SDS-PAGE, Lysate: 40 μ g;
Lane: Human bladder transitional cell carcinoma cancer next level 2-3 tissue lysate;
Primary antibody: 218180 (TRAPPC4 Antibody) at dilution 1/700;
Secondary antibody: HRP-conjugated Goat anti rabbit IgG at 1/5000 dilution;
Exposure time: 30 seconds



Product Description

Pioneering GTPase and Oncogene Product Development since 2010
