

## TRANSMEMBRANE PROTEIN 43 RABBIT MAB

**Cat.#:** N263003

**Product Name:** Anti-Transmembrane Protein 43 Rabbit Monoclonal Antibody

**Synonyms:** LUMA; ARVC5; ARVD5; EDMD7

**UNIPROT ID:** Q9BTV4

**Background:** May have an important role in maintaining nuclear envelope structure by organizing protein complexes at the inner nuclear membrane. Required for retaining emerin at the inner nuclear membrane .

**Immunogen:** A synthetic peptide of human TMEM43

**Applications:** WB,IHC-P

**Recommended Dilutions:** WB: 1/500-1/1000 IHC: 1/50-1/100

**Host Species:** Rabbit

**Clonality:** Rabbit Monoclonal

**Clone ID:** R07-9D4

**MW:** Calculated MW: 45 kDa; Observed MW: 45 kDa

**Isotype:** IgG

**Purification:** Affinity Purified

**Species Reactivity:** Human,Rat

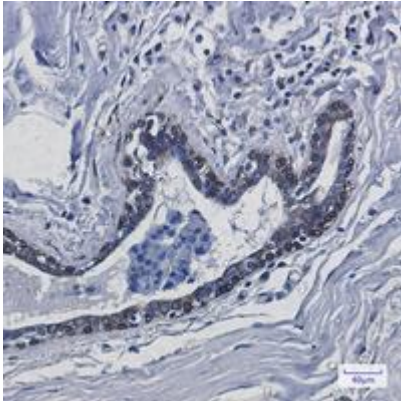
**Conjugation:** Unconjugated

**Modification:** Unmodified

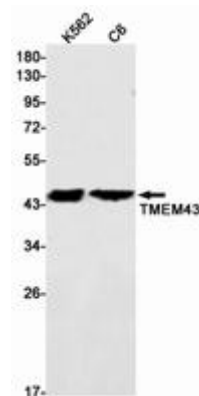
**Constituents:** PBS (without Mg<sup>2+</sup> and Ca<sup>2+</sup>), pH 7.3 containing 50% glycerol, 0.5% BSA and 0.02% sodium azide

**Research Areas:** Tags & Cell Markers

**Storage & Shipping:** Store at -20°C. Avoid repeated freezing and thawing



Immunohistochemistry analysis of paraffin-embedded Human breast cancer using TMEM43 antibody. High-pressure and temperature Sodium Citrate pH 6.0 was used for antigen retrieval.



Western blot analysis of TMEM43 in K562, C6 lysates using Transmembrane Protein 43 antibody.