

## TRAF3IP1 RABBIT PAB

**Cat.#:** S216848

**Product Name:** Anti-TRAF3IP1 Rabbit Polyclonal Antibody

**Synonyms:** MIPT3; MIP-T3

**UNIPROT ID:** Q8TDR0 (Gene Accession - BC059174 )

**Background:** This protein plays an inhibitory role on IL13 signaling by binding to IL13RA1. Involved in suppression of IL13-induced STAT6 phosphorylation, transcriptional activity and DNA-binding. Recruits TRAF3 and DISC1 to the microtubules. It can interact with IL13RA1 and binds to microtubules, TRAF3 and DISC1.

**Immunogen:** Fusion protein of human TRAF3IP1

**Applications:** ELISA, WB, IHC

**Recommended Dilutions:** IHC: 50-200;WB: 500-2000;ELISA: 2000-10000

**Host Species:** Rabbit

**Clonality:** Rabbit Polyclonal

**Isotype:** Immunogen-specific rabbit IgG

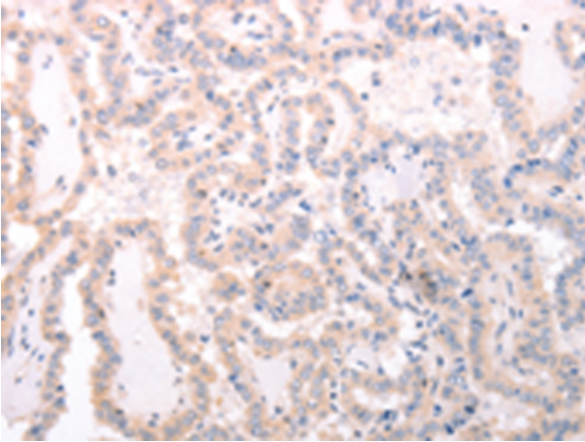
**Purification:** Antigen affinity purification

**Species Reactivity:** Human, Mouse, Rat

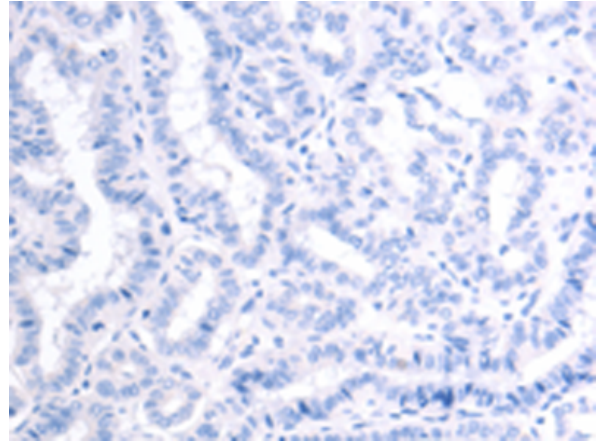
**Constituents:** PBS (without Mg<sup>2+</sup> and Ca<sup>2+</sup>), pH 7.4, 150 mM NaCl, 0.05% Sodium Azide and 40% glycerol

**Research Areas:** Signal Transduction, Immunology

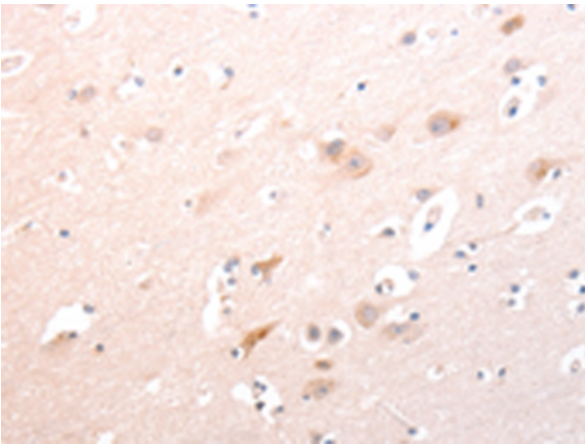
**Storage & Shipping:** Store at -20°C. Avoid repeated freezing and thawing



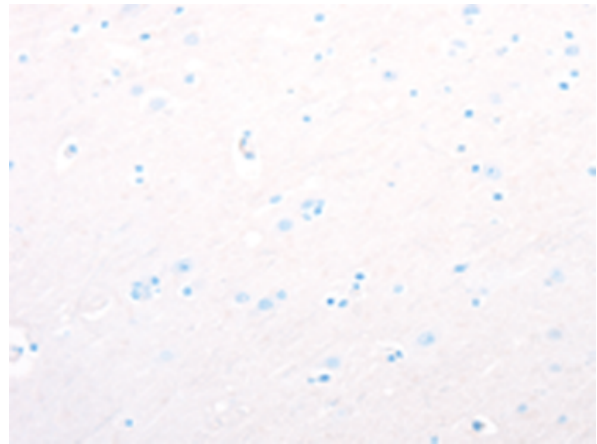
Immunohistochemistry analysis of paraffin embedded Human thyroid cancer tissue using 216848 (TRAF3IP1 Antibody) at a dilution of 1/70 (Cytoplasm).



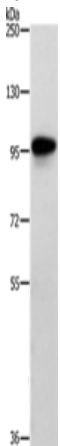
In comparison with the IHC on the left, the same paraffin-embedded Human thyroid cancer tissue is first treated with the fusion protein and then with 216848 (Anti-TRAF3IP1 Antibody) at dilution 1/70.



The image on the left is immunohistochemistry of paraffin-embedded Human brain tissue using 216848 (Anti-TRAF3IP1 Antibody) at a dilution of 1/70.



In comparison with the IHC on the left, the same paraffin-embedded Human brain tissue is first treated with fusion protein and then with D221357 (Anti-TRAF3IP1 Antibody) at dilution 1/70.



Gel: 8% SDS-PAGE, Lysate: 40 µg;  
Lane: Human brain malignant glioma tissue;  
Primary antibody: 216848 (TRAF3IP1 Antibody) at dilution 1/500;  
Secondary antibody: Goat anti rabbit IgG at 1/8000 dilution;  
Exposure time: 2 minutes



# Product Description

Pioneering GTPase and Oncogene Product Development since 2010

---