

## TPT1 RABBIT PAB

**Cat.#:** S217887

**Product Name:** Anti-TPT1 Rabbit Polyclonal Antibody

**Synonyms:** HRF; p02; p23; TCTP

**UNIPROT ID:** P13693 (Gene Accession - BC003352 )

**Background:** Involved in calcium binding and microtubule stabilization.

**Immunogen:** Full length fusion protein

**Applications:** ELISA, WB, IHC

**Recommended Dilutions:** IHC: 45-300;WB: 1000-5000;ELISA: 5000-10000

**Host Species:** Rabbit

**Clonality:** Rabbit Polyclonal

**Isotype:** Immunogen-specific rabbit IgG

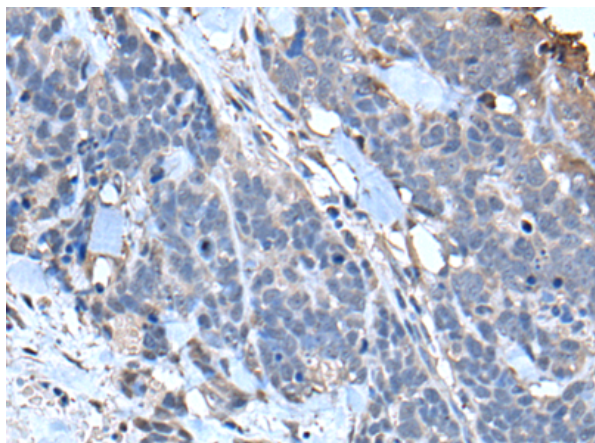
**Purification:** Antigen affinity purification

**Species Reactivity:** Human, Mouse, Rat

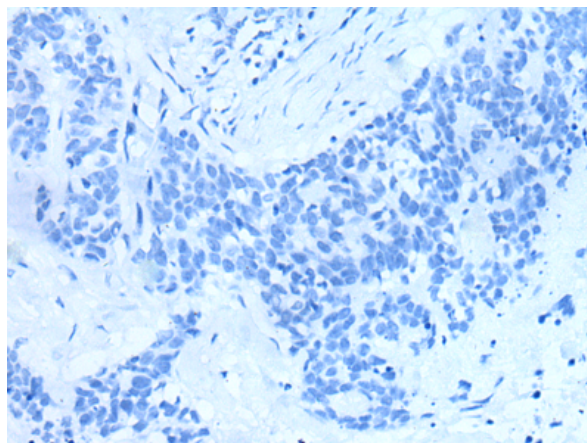
**Constituents:** PBS (without Mg<sup>2+</sup> and Ca<sup>2+</sup>), pH 7.4, 150 mM NaCl, 0.05% Sodium Azide and 40% glycerol

**Research Areas:** Immunology

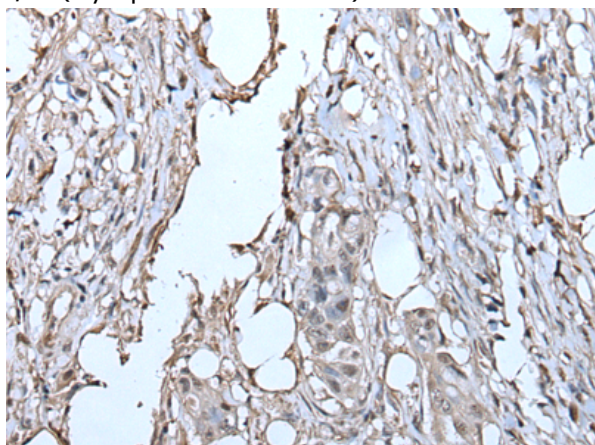
**Storage & Shipping:** Store at -20°C. Avoid repeated freezing and thawing



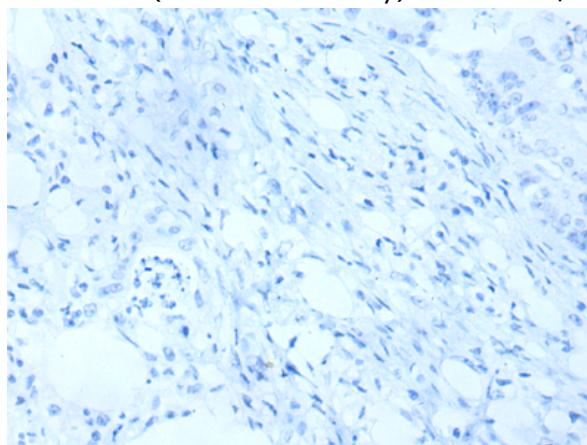
Immunohistochemistry analysis of paraffin embedded Human thyroid cancer tissue using 217887(TPT1 Antibody) at a dilution of 1/85(Cytoplasm or Nucleus).



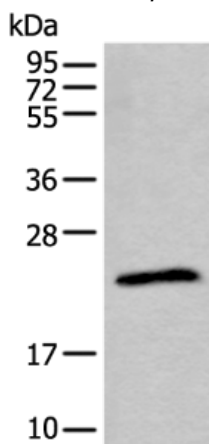
In comparison with the IHC on the left, the same paraffin-embedded Human thyroid cancer tissue is first treated with the fusion protein and then with 217887(Anti-TPT1 Antibody) at dilution 1/85.



The image on the left is immunohistochemistry of paraffin-embedded Human colorectal cancer tissue using 217887(Anti-TPT1 Antibody) at a dilution of 1/85.



In comparison with the IHC on the left, the same paraffin-embedded Human colorectal cancer tissue is first treated with fusion protein and then with D223303(Anti-TPT1 Antibody) at dilution 1/85.



Gel: 12%SDS-PAGE, Lysate: 40 µg;  
 Lane: Jurkat cell lysate;  
 Primary antibody: 217887(TPT1 Antibody) at dilution 1/800;  
 Secondary antibody: Goat anti rabbit IgG at 1/8000 dilution;  
 Exposure time: 20 seconds



# Product Description

Pioneering GTPase and Oncogene Product Development since 2010

---