

## TPST1 RABBIT PAB

**Cat.#:** S221045

**Product Name:** Anti-TPST1 Rabbit Polyclonal Antibody

**Synonyms:** TANGO13A

**UNIPROT ID:** O60507 (Gene Accession - NP\_003587 )

**Background:** Catalyzes the O-sulfation of tyrosine residues within acidic motifs of polypeptides.

**Immunogen:** Synthetic peptide of human TPST1

**Applications:** ELISA, IHC

**Recommended Dilutions:** IHC: 20-100; ELISA: 2000-5000

**Host Species:** Rabbit

**Clonality:** Rabbit Polyclonal

**Isotype:** Immunogen-specific rabbit IgG

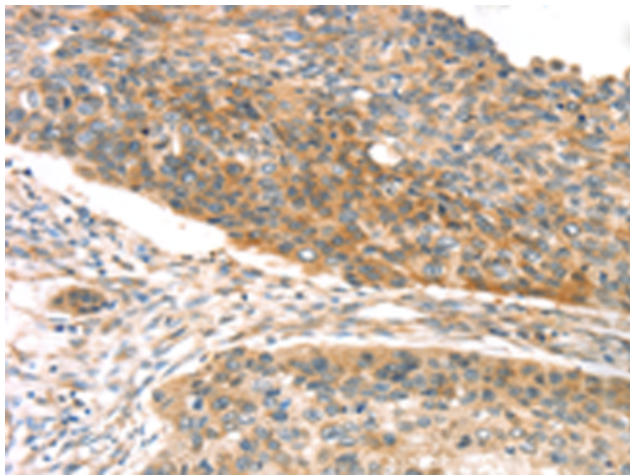
**Purification:** Antigen affinity purification

**Species Reactivity:** Human, Mouse, Rat

**Constituents:** PBS (without Mg<sup>2+</sup> and Ca<sup>2+</sup>), pH 7.4, 150 mM NaCl, 0.05% Sodium Azide and 40% glycerol

**Research Areas:** Cardiovascular

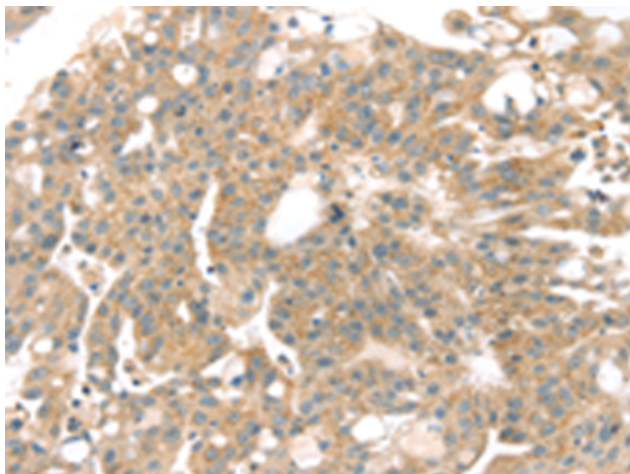
**Storage & Shipping:** Store at -20°C. Avoid repeated freezing and thawing



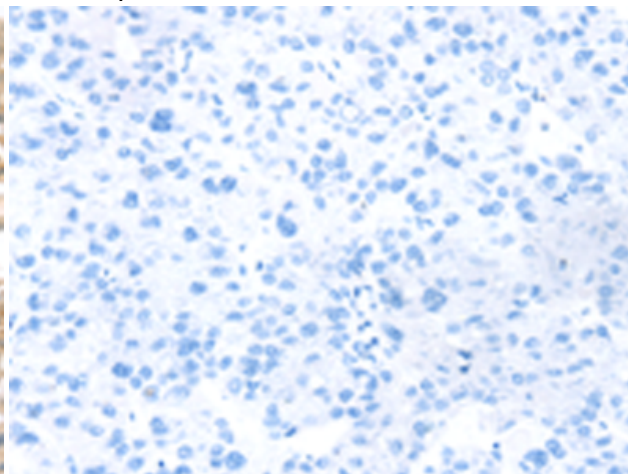
Immunohistochemistry analysis of paraffin embedded Human esophagus cancer tissue using 221045 (TPST1 Antibody) at a dilution of 1/20 (Cytoplasm and Cell membrane).



In comparison with the IHC on the left, the same paraffin-embedded Human esophagus cancer tissue is first treated with the synthetic peptide and then with 221045 (Anti-TPST1 Antibody) at dilution 1/20.



The image on the left is immunohistochemistry of paraffin-embedded Human breast cancer tissue using 221045 (Anti-TPST1 Antibody) at a dilution of 1/20.



In comparison with the IHC on the left, the same paraffin-embedded Human breast cancer tissue is first treated with synthetic peptide and then with D262402 (Anti-TPST1 Antibody) at dilution 1/20.