

## TPP1 RABBIT MAB

**Cat.#:** N263011

**Product Name:** Anti-TPP1 Rabbit Monoclonal Antibody

**Synonyms:** CLN2; GIG1; LPIC; SCAR7; TPP-1

**UNIPROT ID:** O14773

**Background:** Lysosomal serine protease with tripeptidyl-peptidase I activity. May act as a non-specific lysosomal peptidase which generates tripeptides from the breakdown products produced by lysosomal proteinases. Requires substrates with an unsubstituted N-terminus .

**Immunogen:** Recombinant protein of human TPP1

**Applications:** WB,IHC-P

**Recommended Dilutions:** WB: 1/500-1/1000 IHC: 1/50-1/100

**Host Species:** Rabbit

**Clonality:** Rabbit Monoclonal

**Clone ID:** R09-2G9

**MW:** Calculated MW: 61 kDa; Observed MW: 61,48 kDa

**Isotype:** IgG

**Purification:** Affinity Purified

**Species Reactivity:** Human

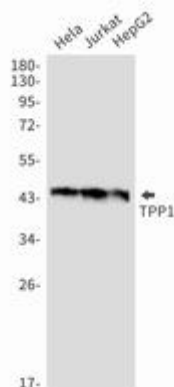
**Conjugation:** Unconjugated

**Modification:** Unmodified

**Constituents:** PBS (without Mg<sup>2+</sup> and Ca<sup>2+</sup>), pH 7.3 containing 50% glycerol, 0.5% BSA and 0.02% sodium azide

**Research Areas:** Neuroscience

**Storage & Shipping:** Store at -20°C. Avoid repeated freezing and thawing



Western blot analysis of TPP1 in Hela, Jurkat, HepG2 lysates using TPP1 antibody.



# Product Description

Pioneering GTPase and Oncogene Product Development since 2010

---