

TPM1 RABBIT PAB

Cat.#: S216860

Product Name: Anti-TPM1 Rabbit Polyclonal Antibody

Synonyms: CMH3; TMSA; CMD1Y; C15orf13; HTM-alpha

UNIPROT ID: P09493 (Gene Accession - BC007433)

Background: This gene is a member of the tropomyosin family of highly conserved, widely distributed actin-binding proteins involved in the contractile system of striated and smooth muscles and the cytoskeleton of non-muscle cells. Tropomyosin is composed of two alpha-helical chains arranged as a coiled-coil. It is polymerized end to end along the two grooves of actin filaments and provides stability to the filaments. The encoded protein is one type of alpha helical chain that forms the predominant tropomyosin of striated muscle, where it also functions in association with the troponin complex to regulate the calcium-dependent interaction of actin and myosin during muscle contraction. In smooth muscle and non-muscle cells, alternatively spliced transcript variants encoding a range of isoforms have been described. Mutations in this gene are associated with type 3 familial hypertrophic cardiomyopathy.

Immunogen: Fusion protein of human TPM1

Applications: ELISA, WB, IHC

Recommended Dilutions: IHC: 50-200;WB: 1000-5000;ELISA: 2000-10000

Host Species: Rabbit

Clonality: Rabbit Polyclonal

Isotype: Immunogen-specific rabbit IgG

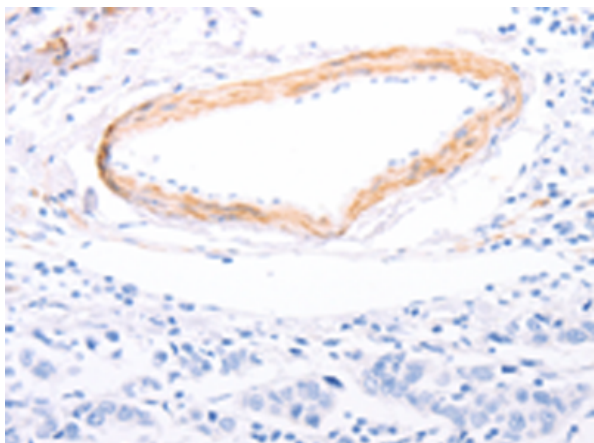
Purification: Antigen affinity purification

Species Reactivity: Human, Mouse, Rat

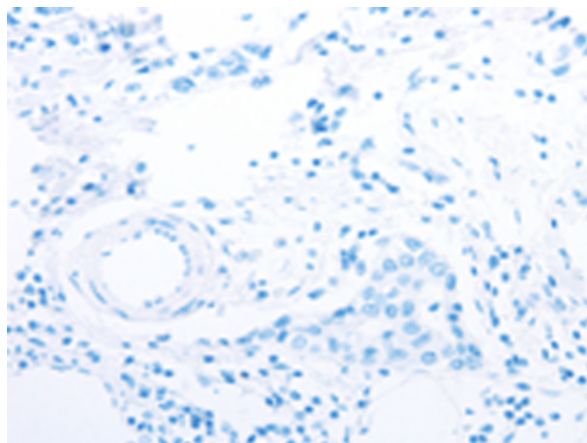
Constituents: PBS (without Mg²⁺ and Ca²⁺), pH 7.4, 150 mM NaCl, 0.05% Sodium Azide and 40% glycerol

Research Areas: Signal Transduction, Cardiovascular

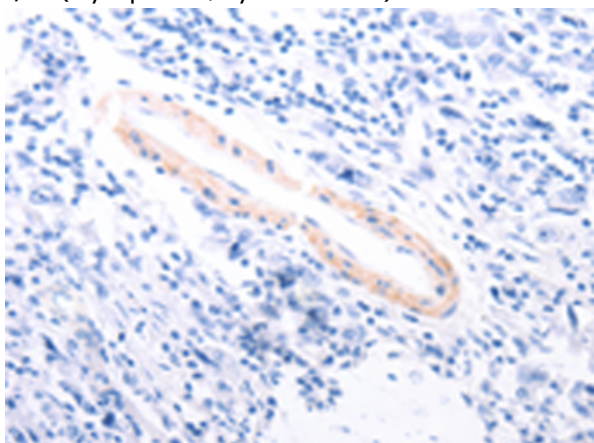
Storage & Shipping: Store at -20°C. Avoid repeated freezing and thawing



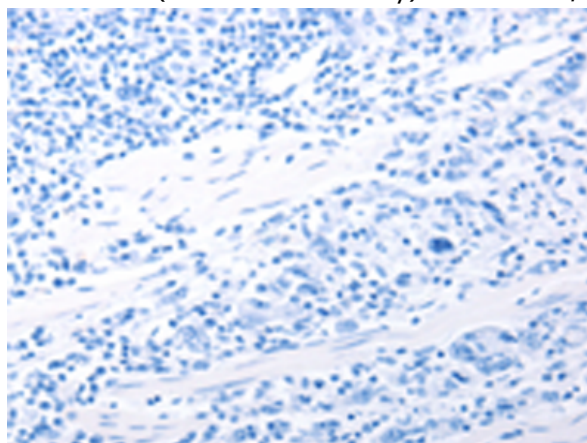
Immunohistochemistry analysis of paraffin embedded Human breast cancer tissue using 216860(TPM1 Antibody) at a dilution of 1/80(Cytoplasm, cytoskeleton).



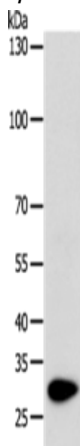
In comparison with the IHC on the left, the same paraffin-embedded Human breast cancer tissue is first treated with the fusion protein and then with 216860(Anti-TPM1 Antibody) at dilution 1/80.



The image on the left is immunohistochemistry of paraffin-embedded Human gastric cancer tissue using 216860(Anti-TPM1 Antibody) at a dilution of 1/80.



In comparison with the IHC on the left, the same paraffin-embedded Human gastric cancer tissue is first treated with fusion protein and then with D221373(Anti-TPM1 Antibody) at dilution 1/80.



Gel: 12%SDS-PAGE, Lysate: 50 µg;
Lane: Mouse heart tissue;
Primary antibody: 216860(TPM1 Antibody) at dilution 1/1000;
Secondary antibody: Goat anti rabbit IgG at 1/8000 dilution;
Exposure time: 1 minute



Product Description

Pioneering GTPase and Oncogene Product Development since 2010
